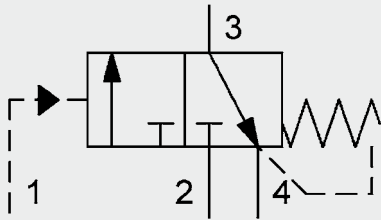


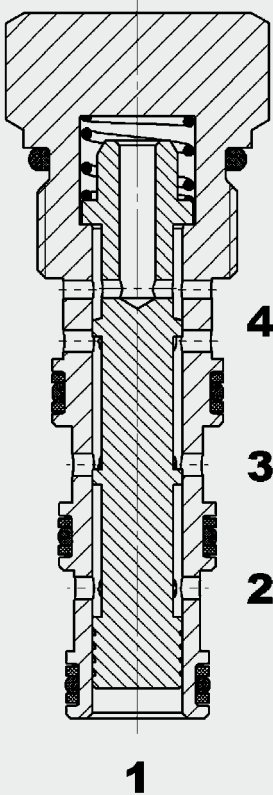
3/2 Directional Spool Valve Hydraulically Operated Direct-Acting SAE-10 Cartridge – 250 bar WKH10C

UNF



Up to 10 l/min
Up to 250 bar

FUNCTION



The WKH10C is a hydraulically operated 3/2 directional valve. Normally closed at the pump port 2, oil can flow from port 3 (consumer) to port 4 (tank) below the spring pressure.

With an application of pressure at port 1 against the spring force, the valve opens from pump port 2 to port 3. The tank port 4 is then closed.

FEATURES

- Low pressure drop throughout flow range
- External surfaces zinc-plated and corrosion-proof
- Hardened and ground internal valve components to ensure minimal wear and extended service life

SPECIFICATIONS

Operating pressure:	max. 250 bar
Nominal flow:	max. 10 l/min
Internal leakage:	max. 120 cm ³ /min at 250 bar and 36 mm ² /s
Media operating temperature range:	min. -30 °C to max. +100 °C
Ambient temperature range:	min. -30 °C to max. +80 °C
Operating fluid:	Hydraulic oil to DIN 51524 Part 1 and 2
Viscosity range:	min. 10 mm ² /s to max. 420 mm ² /s
Filtration:	Class 21/19/16 according to ISO 4406 or cleaner
MTTF _d :	150 years (see "Conditions and instructions for valves" in brochure 5.300)
Installation:	No orientation restrictions
Materials:	Valve body: steel Spool: hardened and ground steel Seals: NBR (standard) FKM (optional, media temperature range -20 °C to +120 °C)
	Back-up rings: PTFE
Cavity:	FC10-4
Weight:	approx. 0.15 kg

