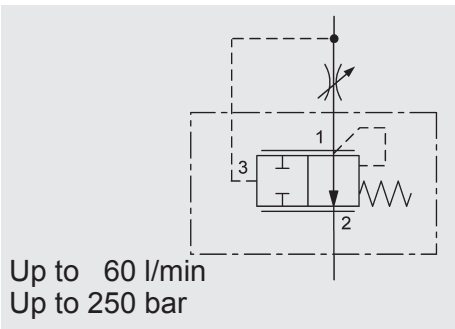
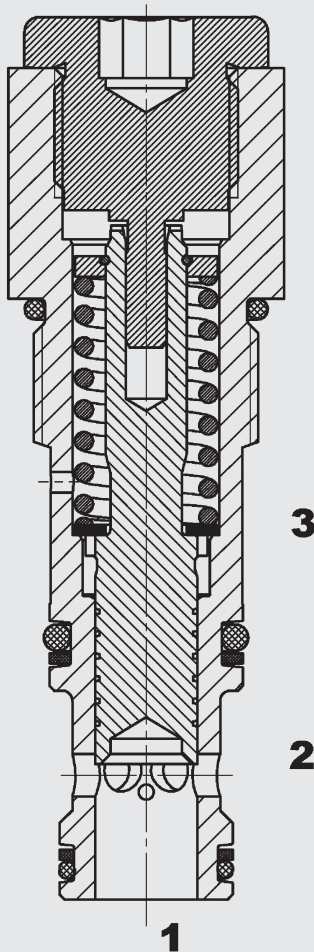


Pressure Compensator, Downstream, Spool Type, Direct-Acting, Normally Open ISO-Metric Cartridge – 250 bar

DWM10130R



FUNCTION



The pressure compensator DWM10130R is a normally open, direct-acting, spring-loaded flow control valve. By maintaining a constant differential between inlet and outlet pressure of an orifice (ports 3 and 1 of the pressure compensator), a constant flow rate is maintained (independently of the load pressure). As soon as the pressure differential exceeds the value pre-set by the spring force, the control piston reduces an orifice cross-section. The pressure compensator can, for example, be used when lowering variable loads at the same velocity. Together with a flow control valve it can be used as a flow regulator.

FEATURES

- Used to control the flow rate of consumers independently of the load pressure
- Versions available for different control pressure differentials and flow rates up to max. 60 l
- Excellent stability throughout pressure and flow range
- Excellent dynamic performance
- External surfaces zinc-nickel plated and corrosion-proof
- Hardened and ground valve components to ensure minimal wear and extended service life

SPECIFICATIONS

Operating pressure:	max. 250 bar	
Nominal flow:	max. 60 l/min	
Media operating temperature range:	min. -30 °C to max. +100 °C	
Ambient temperature range:	min. -30 °C to max. +100 °C	
Operating fluid:	Hydraulic oil to DIN 51524 Part 1 and 2	
Viscosity range:	min. 10 mm ² /s to max. 420 mm ² /s	
Filtration:	Class 21/19/16 according to ISO 4406 or cleaner	
MTTF _d :	150 years*	
Materials:	Valve body:	free-cutting steel
	Spool:	hardened and ground steel
	Seals:	NBR (standard) FKM (optional, ambient temperature range -20 to +120 °C)
	Back-up rings:	PTFE
Cavity:	10130	
Weight:	Total:	0.225 kg

* see "Conditions and instructions for valves" in brochure 5.300

MODEL CODE

DWM 10130 R - 22 - C - N - 05

Basic model

Pressure compensator

Cavity to ISO

Function symbol

R = downstream pressure compensator

Type

22 = standard, with damping

23 = standard, with enhanced damping

Body and ports*

C = cartridge only

Versions with bodies on request

Seals

N = NBR (standard)

V = FKM (optional)

Control pressure differential

05 = 5 bar differential pressure

15 = 15 bar differential pressure

Standard models

Model code	Part No.
DWM10130R-22-C-N-05	3198240
DWM10130R-22-C-N-15	3198239
Other models on request	

*Inline bodies

Code	Part No.	Material	Ports	Pressure
R10130-01X-01	395238	Steel, zinc-plated	G 1/2	420 bar
R10130-01X-02	395239	Steel, zinc-plated	M22 x 1.5	420 bar

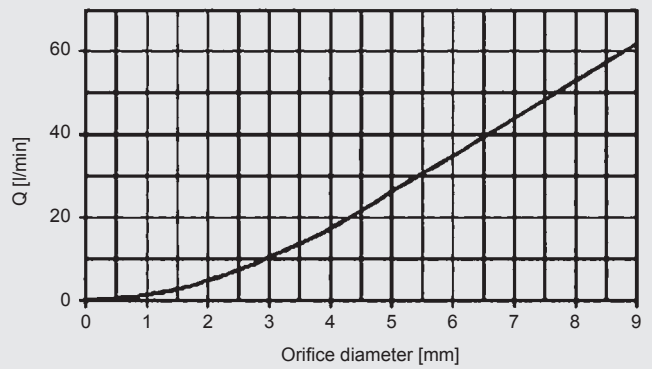
Seal kits

Code	Material	Part No.
Seal kit 10130-NBR	NBR	3231327
Seal kit 10130-FKM	FKM	3506050

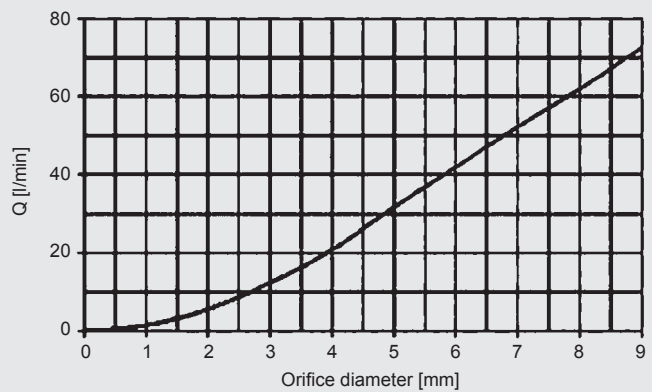
PERFORMANCE

Measured at $v = 33 \text{ mm}^2/\text{s}$, $T_{\text{oil}} = 46 \text{ }^\circ\text{C}$, load pressure 25 bar

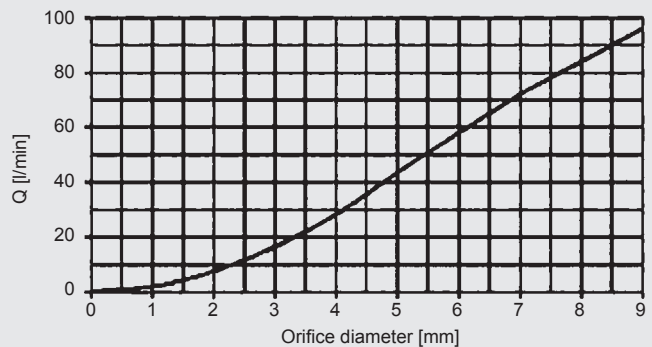
DWM10130R-..-C-.-5



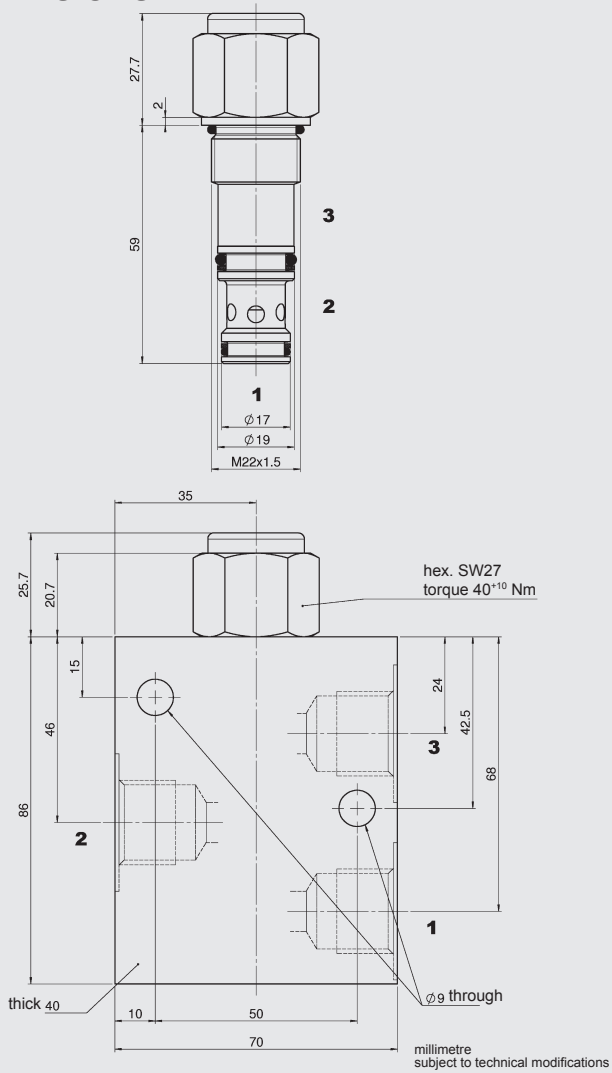
DWM10130R-..-C-.-11



DWM10130R-..-C-.-15

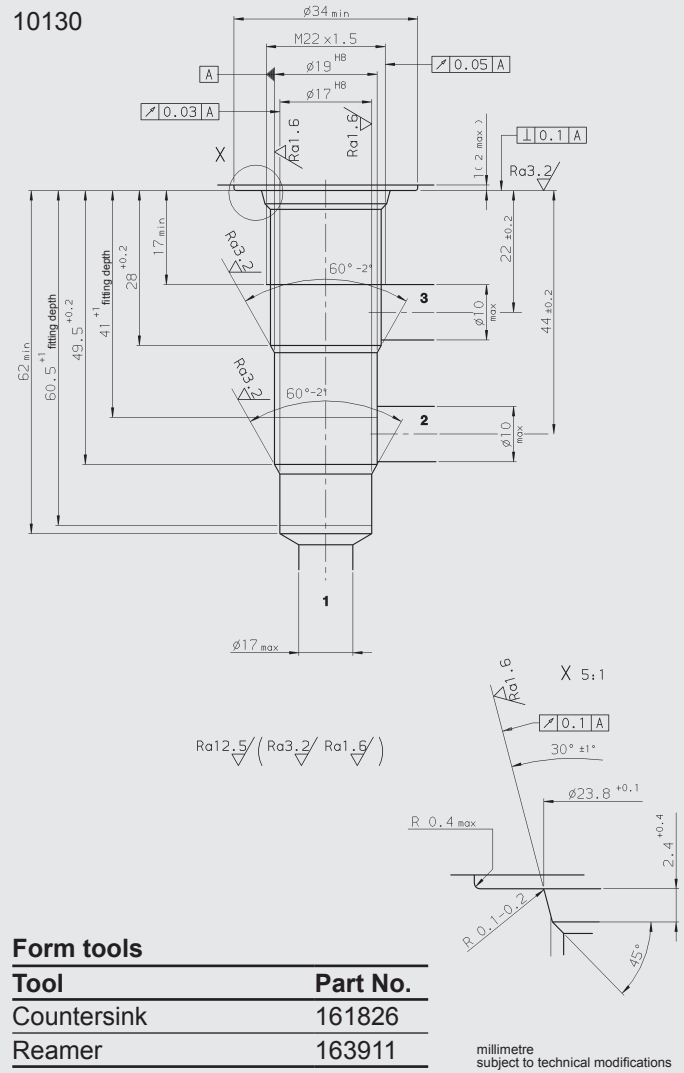


DIMENSIONS



CAVITY

10130



Note

The information in this brochure relates to the operating conditions and applications described. For applications or operating conditions not described, please contact the relevant technical department. Subject to technical modifications.

HYDAC Fluidtechnik GmbH

Justus-von-Liebig-Str.
D-66280 Sulzbach/Saar
Tel: 0 68 97 /509-01
Fax: 0 68 97 /509-598
E-Mail: flutec@hydac.com

