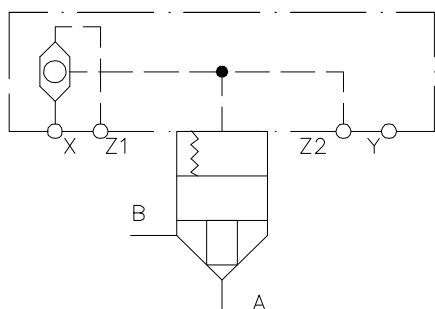
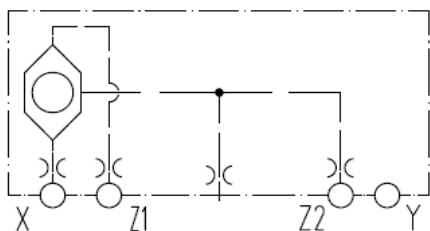




2/2 slip-in cartridge cover Function 2DR Series LD-CCE Size 16 up to 32

SYMBOL

P max = 350 bar



FEATURES:

- 2/2 slip-in cartridge covers with remote control port according to ISO 7368
- with possibility to built-in a nozzle at port C, X, Z1,Z2

SPECIFICATIONS:

Operating pressure:	max. 350 bar
Temp. range of operating fluid:	min. -20°C up to max. +80°C
Ambient temperature range:	min. -20°C up to max. +60°C
Operating fluid:	hydraulic fluid according to DIN 51524 part 1 and 2
Filtration:	Class 20/18/15 according to ISO 4406 (C)
Viscosity range:	2,8 up to 380 mm ² /s
Seals:	FKM + PU (NBR / FKM on request)

Standard models

Type	Part No.
LD-CCE 16 D6 2DR	6083395
LD-CCE 25 D6 2DR	6083396
LD-CCE 32 D6 2DR	6083397

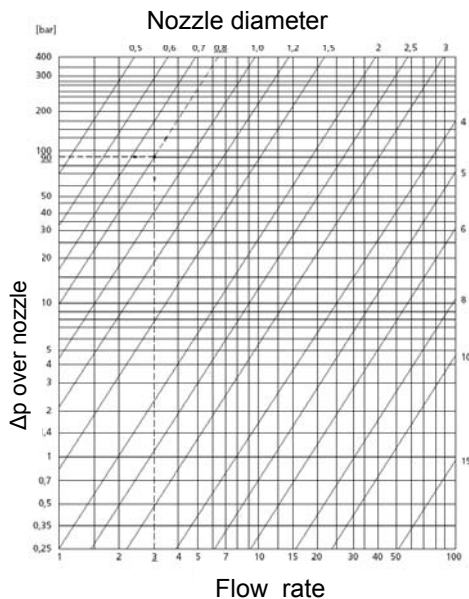
Nozzles

Ports	NG16	NG25	NG32
X, C, Z1, Z2	M5	M6	M6

Nozzle 0.8	Part No.
Nozzle Control cover M5x0,8	6071916
Nozzle Control cover M6x0,8	6071917

Nozzle 1,5	Part No.
Nozzle Control cover M5x1,5	6071920
Nozzle Control cover M6x1,5	6071921

Nozzle choice



Annotation
 The technical information in this brochure are relating to the operating conditions and applications. At deviant applications and/or operating conditions please contact the technical dept. Technical information are subject to technical modifications.

HYDAC Fluidtechnik GmbH
 Justus-von-Liebig-Str. 5
 66280 Sulzbach / Saar
 Tel.: 06897 / 509-0
 Fax: 06897 / 509-598
 Email: flutec@hydac.com

MODEL CODE

LD - C C E 16 D 6 2DR

Name _____
 LD-CCE= Control cover for 2/2- cartridge valve,
 Standard

Nominal size _____
 NG 16, 25, 32

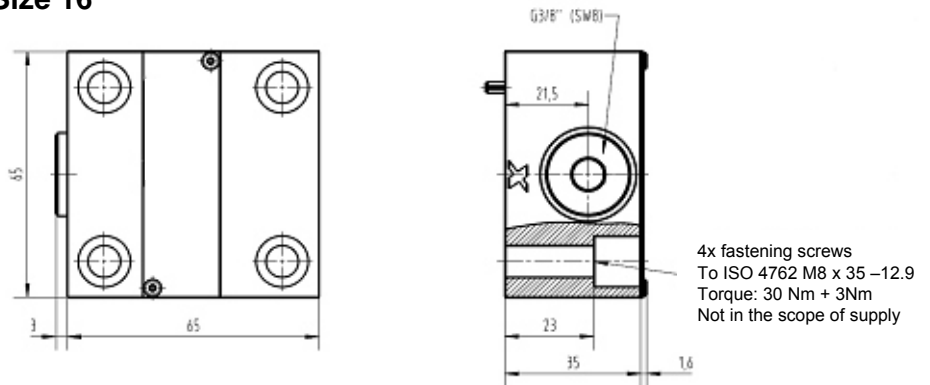
Series _____
 named by manufacturer

Type _____
 Threads and control ports according to ISO 7368

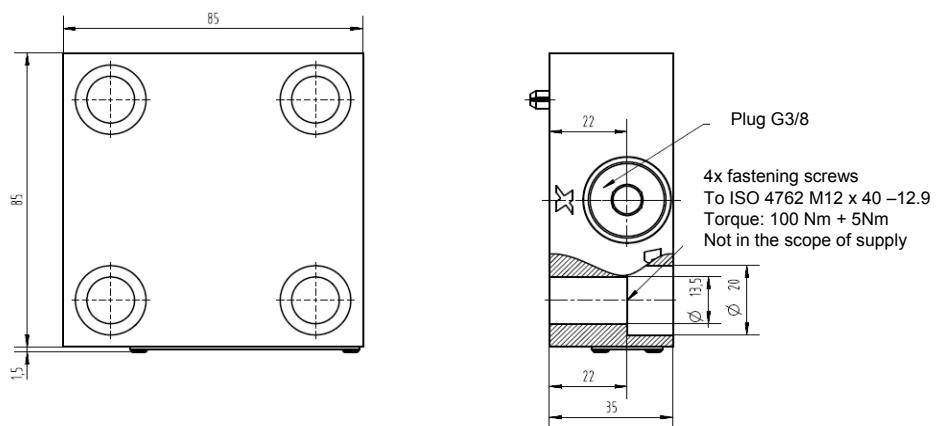
Cover code _____
 2DR = functional symbol

DIMENSIONS

Size 16



Size 25



Size 32

