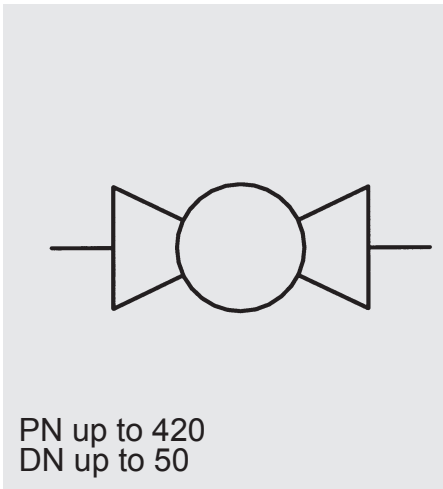




SAE Threaded Flange Ball Valves

KHBG-F3/6 / KHMG-F3/6



PN up to 420
DN up to 50

Model code
(also order example)

KHBG 20 F3 11141 02 X ...

Designation

KHBG = Block-type ball valve - threaded flange
DN 16 - 25

KHMG = Sleeve-type ball valve - threaded flange
DN 32 - 50

Nominal bore

Type of SAE flange

F3 = 3000 PSI (210 bar)
F6 = 6000 PSI (420 bar)

Materials

Housing, connection adapters

1 = Steel
3 = Stainless steel

Ball, control spindle

1 = Steel
3 = Stainless steel

Ball seals

1 = POM

Control spindle seal and connection seal

4 = FKM (Viton)

SAE threaded flange

1 = Steel
3 = Stainless steel

Handle

02 = Aluminium clamped handle, cranked
06 = Steel bolt-on handle, cranked
26 = Steel bolt-on handle, cranked, long (SW17)

Series

(determined by manufacturer)

Surface protection

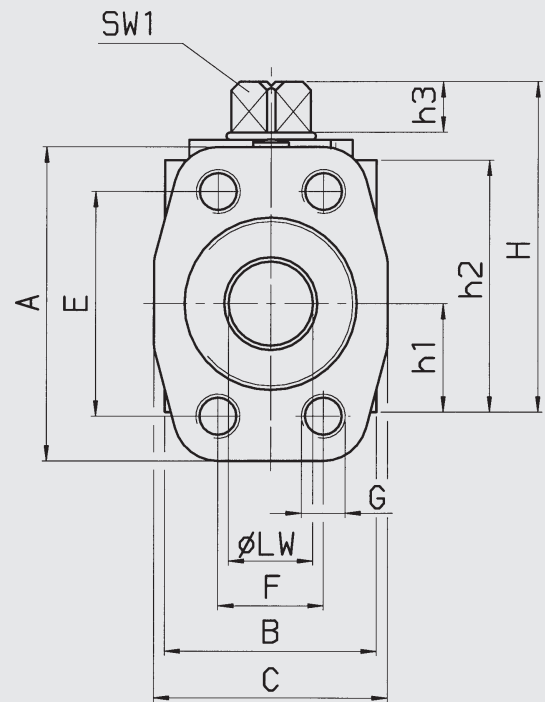
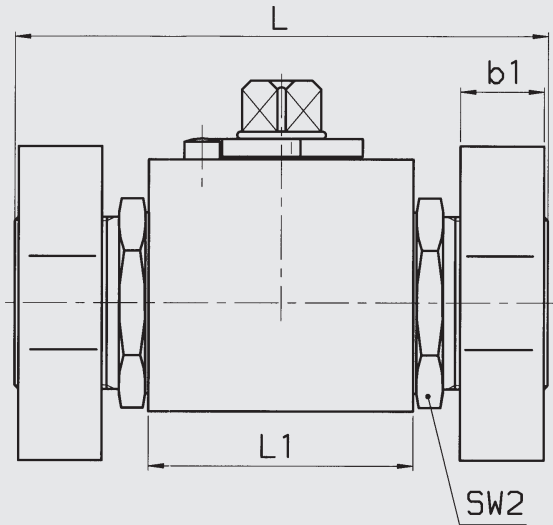
... = Phosphate-plated (no details required)
A = Zinc-plated, chrome (VI)-free

Technical specifications

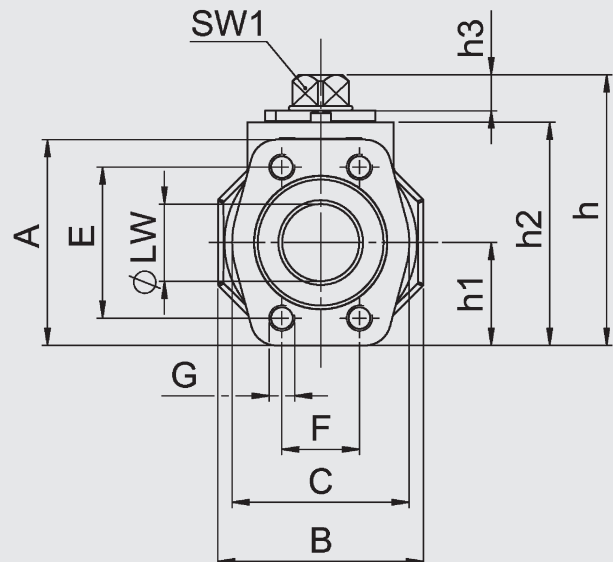
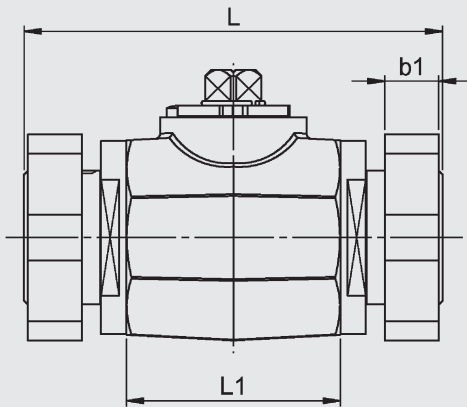
Type of construction:	Block type KHBG DN 16 - 25 Sleeve type KHMG DN 32 - 50
Type of connection:	ISO 6162, Table 1 and 2 (SAE J 518 c)
Flange connections:	SAE threaded flange
Mounting position:	Optional
Ambient temperature:	-10 °C to +80 °C
Nominal pressure:	Up to PN 420/6000 PSI
Operating fluids:	Mineral oil to DIN 51524 part 1 and part 2 (other fluids on request)
Temperature of operating fluid:	-10 °C to +80 °C
Spare parts:	Seal kits available on request, see Spare Parts List

Dimensions

SAE - threaded flange ball valve
KHBG



KHMG



KHBG / KHMG - F3

Type	SAE size	DN	LW	L	L1	H	h1	h2	h3	B	SW1	SW2
KHBG-16-F3	1/2"	16	13	104	47	62	20	46	11	39	12	32
KHBG-20-F3	3/4"	20	19	121	60	75	24.5	57	11.6	48	14	41
KHBG-25-F3	1"	25	25	133	65	82	28.5	64	11.6	57	14	50
KHMG-32-F3	1 1/4"	32	30	163	83.4	105.2	40	86.7	12	80	17	60
KHMG-40-F3-XL	1 1/2"	40	38	177	91	116.2	45	97.7	12	90	17	70
KHMG-50-F3-XL	2"	50	48	196	100	134.2	55.5	115.7	12	111	17	80

Flange F3

Type	b1	A	C	E	F	G	Nominal pressure PN [bar]	Weight [kg]
KHBG-16-F3	16	54	46	38.1	17.5	M8	350	1.1
KHBG-20-F3	18	65	52	47.6	22.3	M10	350	1.9
KHBG-25-F3	19	70	59	52.4	26.2	M10	350	2.4
KHMG-32-F3	21	79.5	73	58.7	30.2	M10	275	3.8
KHMG-40-F3-XL	25	93.8	83	69.9	35.7	M12	210	6.3
KHMG-50-F3-XL	26	102	97	77.8	42.9	M12	210	9.6

KHBG / KHMG - F6

Type	SAE size	DN	LW	L	L1	H	h1	h2	h3	B	SW1	SW2
KHBG-16-F6	1/2"	16	13	104	47	62	20	46	11	39	12	32
KHBG-20-F6	3/4"	20	19	121	60	75	24.5	57	11.6	48	14	46
KHBG-25-F6-XL	1"	25	25	148	65	82	28.5	64	11.6	57	14	50
KHMG-32-F6-XL	1 1/4"	32	30	172	83.4	105.2	40	86.7	12	80	17	60
KHMG-40-F6-XL	1 1/2"	40	38	177	91	116.2	45	97.7	12	90	17	70
KHMG-50-F6-XL	2"	50	48	196	100	134.2	55.5	115.7	12	111	17	80

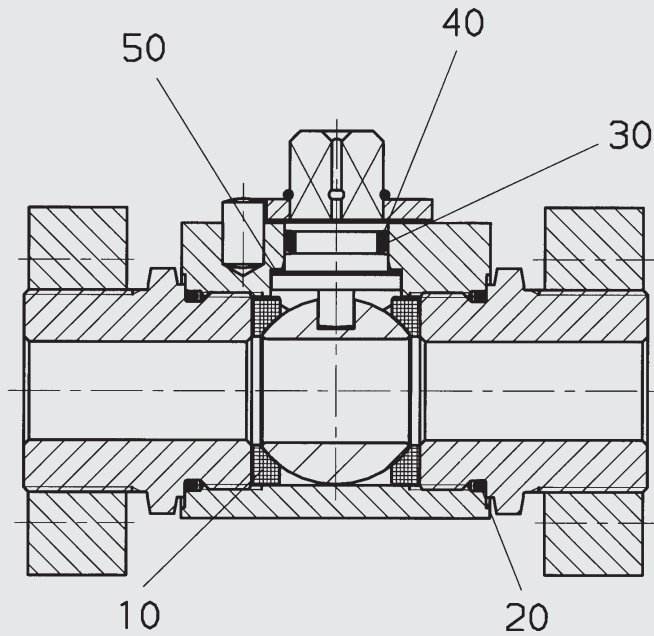
Flange F6

Type	b1	A	C	E	F	G	Nominal pressure PN [bar]	Weight [kg]
KHBG-16-F6	16	56.5	48	40.5	18.2	M8	420	1.2
KHBG-20-F6	19	71.4	60	50.8	23.8	M10	420	2
KHBG-25-F6-XL	24	81	70	57.2	27.8	M12	420	3.0
KHMG-32-F6-XL	27	95.3	78	66.6	31.8	M14	420	4.7
KHMG-40-F6-XL	30	113	95	79.3	36.5	M16	420	7.3
KHMG-50-F6-XL	35	133	114	96.8	44.5	M20	420	11.5

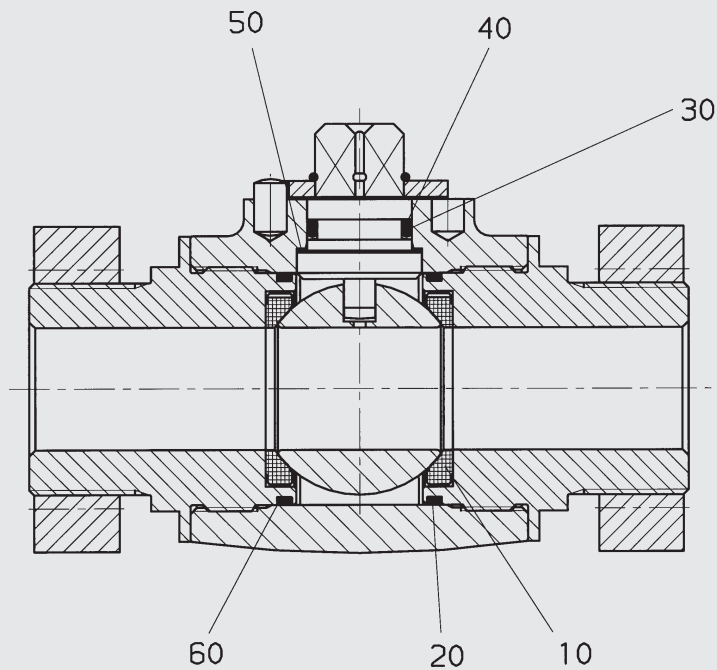
Spare Parts

(Seal kit)

KHBG, DN 16 - 25



KHMG, DN 32 - 50



Seal kit	Order No. = Part No.
DN 16	703003
DN 20	703016
DN 25	700978
DN 32	703025
DN 40	703015
DN 50	701293

NOTE

The information in this brochure relates to the operating conditions and applications described.

For applications and operating conditions not described, please contact the relevant technical department.

Subject to technical modifications.