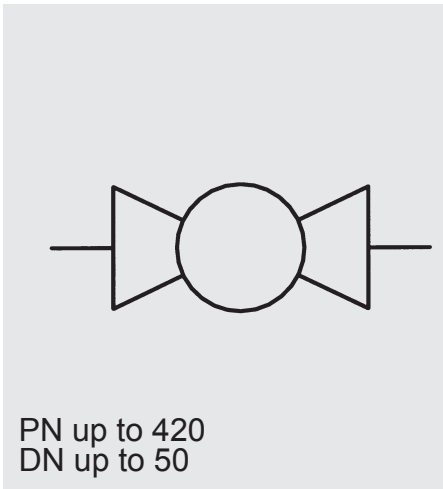


SAE Threaded / Split flange Ball Valves

KHBGS-F3/6 / KHMGS-F3/6



Model code
(also order example)

KHBGS 16 F3 11141 06 X ...

Designation

KHBGS = Block-type ball valve - threaded/split flange
DN 16 - 25

KHMGS = Sleeve-type ball valve - threaded/split flange
DN 32 - 50

Nominal bore
(DN)

Type of SAE flange

F3 = 3000 PSI (210 bar)
F6 = 6000 PSI (420 bar)

Materials

Housing, connection adapters

1 = Steel
3 = Stainless steel

Ball, control spindle

1 = Steel
3 = Stainless steel

Ball seals

1 = POM

Control spindle seal and connection seal

2 = NBR
4 = FKM (Viton)

SAE flanges

1 = Steel
3 = Stainless steel

Handle

02 = Aluminium clamped handle, cranked
06 = Steel bolt-on handle, cranked
26 = Steel bolt-on handle, cranked, long (SW17)

Series

(determined by manufacturer)

Surface protection

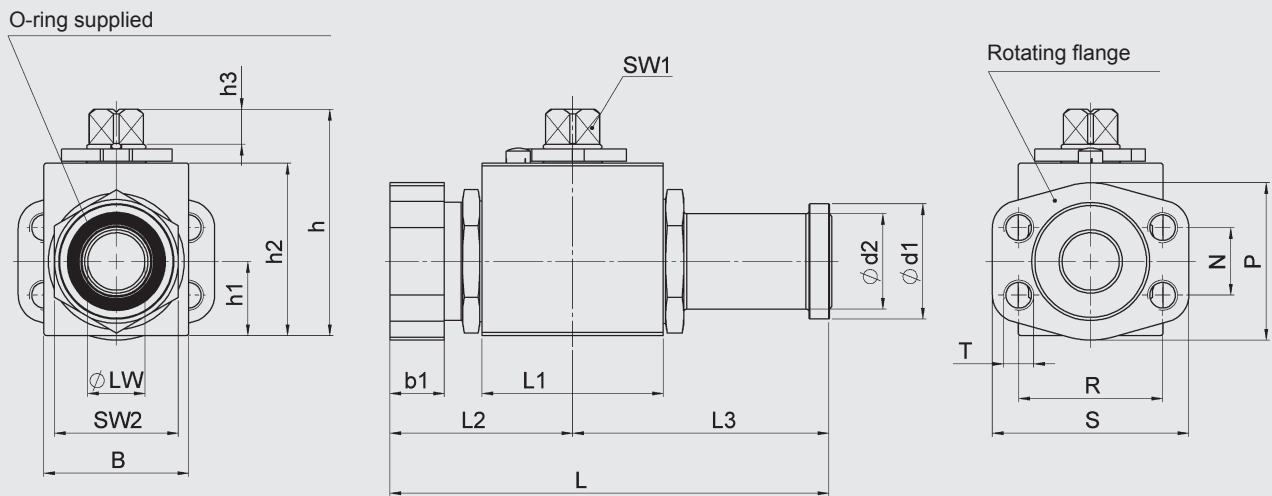
... = Phosphate-plated (no details required)
A = Zinc-plated, chrome (VI)-free

Technical specifications

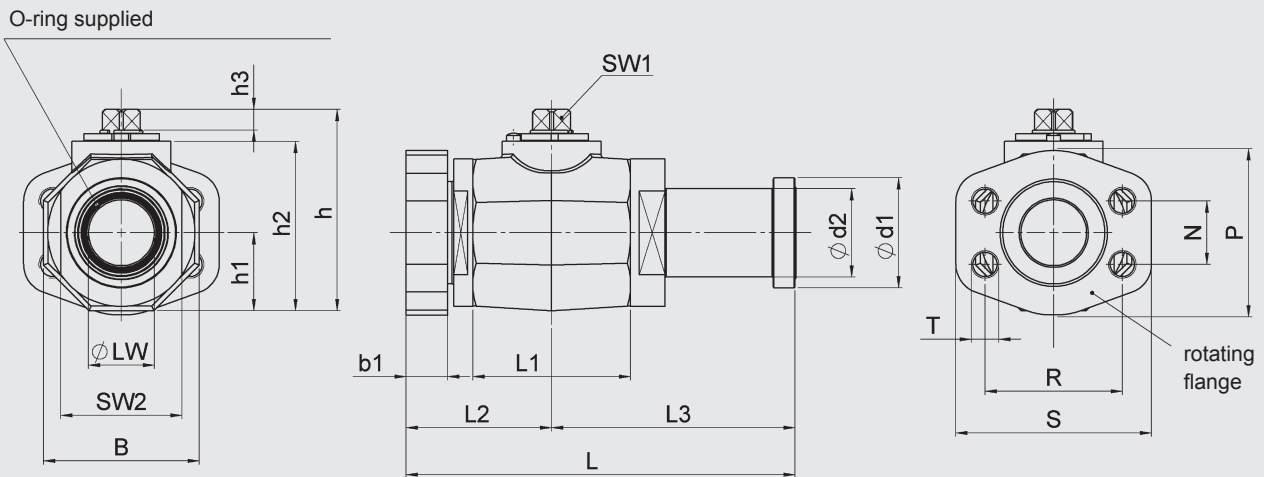
Type of construction:	Block type KHB DN 16 - 25 Sleeve type KHM DN 32 - 50
Flange dimensions:	ISO 6162, Table 1 and 2 (SAE J 518 c)
Flange connections:	SAE threaded flange, SAE split flange
Mounting position:	Optional
Ambient temperature:	-10 °C to +80 °C
Nominal pressure:	Up to PN 420 / 6000 PSI
Operating fluids:	Mineral oil to DIN 51524 part 1 and part 2 (other fluids on request)
Temperature of operating fluid:	-10 °C to +80 °C
Spare parts:	Seal kits available on request

Dimensions

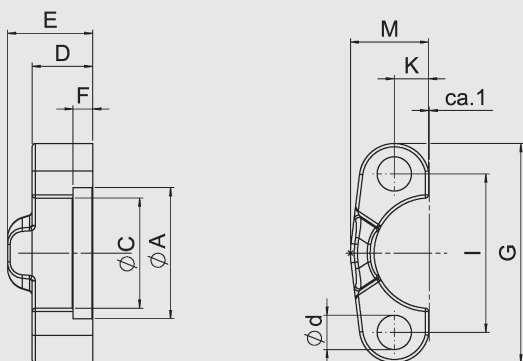
SAE threaded/split flange ball valve KHB



KHM



SAE split flange



KHBGS / KHMGS - F3

Type	SAE size	DN	LW	L	L1	L2	L3	h	h1	h2	h3	B	b1	d1	d2	SW1	SW2	O-ring
KHBGS-16-F3	1/2"	16	13	127.5	47	52	75.5	62	19	45	11	38	16	30.2	24	12	32	18.66x3.53
KHBGS-20-F3	3/4"	20	19	145.5	60	60.5	85	75	24.5	57	11.6	48	18	38.1	31.5	14	41	25x3.53
KHBGS-25-F3	1"	25	25	154.7	65	66.5	88.2	82	28.5	64	11.6	57	19	44.45	38	14	50	32.92x3.53
KHMGS-32-F3	1 1/4"	32	30	218.5	83.4	81.5	137	105.2	40	86.7	12	80	8	50.8	43	17	60	37.7x3.53
KHMGS-40-F3	1 1/2"	40	38	244	91	84	160	116.2	45	97.7	12	90	8	60.35	50	17	70	47.22x3.53
KHMGS-50-F3	2"	50	48	254.5	100	93	161.5	134.2	55.5	115.7	12	111	9.6	71.4	62	17	80	56.74x3.53

SAE split flanges - F3

Type	A	C	D	E	F	M	K	I	G	d	Nominal pressure PN [bar]	Weight [kg]
KHBGS-16-F3	31	24.3	13	19	6.2	21.8	8	38.1	53.1	9	350	1.1
KHBGS-20-F3	38.9	32.1	14	22	6.2	26	11.1	47.6	65	10.5	350	2.1
KHBGS-25-F3	45.2	38.5	16	22	7.5	29.2	13.1	52.4	70	10.5	350	2.8
KHMGS-32-F3	51.6	43.7	14	22	7.5	36.3	15.1	58.7	80	12	275	4.7
KHMGS-40-F3	61.1	50.8	16	24	7.5	41.1	17.9	69.9	94	13.5	210	6.9
KHMGS-50-F3	72.2	62.7	16	26	9	48.2	21.4	77.8	102	13.5	210	9.7

SAE threaded flanges - F3

Type	S	P	R	N	T	Nominal pressure PN [bar]	Weight [kg]
KHBGS-16-F3	54	46	38.1	17.5	M8	350	1.1
KHBGS-20-F3	65	52	47.6	22.3	M10	350	1.9
KHBGS-25-F3	70	59	52.4	26.2	M10	350	2.4
KHMGS-32-F3	79.5	73	58.7	30.2	M10	275	3.8
KHMGS-40-F3	93.8	83	69.9	35.7	M12	210	6.3
KHMGS-50-F3	102	97	77.8	42.9	M12	210	9.6

KHBGS / KHMGS - F6

Type	SAE size	DN	LW	L	L1	L2	L3	h	h1	h2	h3	B	b1	d1	d2	SW1	SW2	O-ring
KHBGS-16-F6	1/2"	16	13	127.5	47	52	75.5	62	19	45	11	38	16	31.8	24	12	32	18.66x3.53
KHBGS-20-F6	3/4"	20	19	145.5	60	60.5	85	75	24.5	57	11.6	48	18	41.3	32	14	46	25x3.53
KHBGS-25-F6	1"	25	25	165.75	65	66.5	99.3	82	28.5	64	11.6	57	19	47.6	38	14	50	32.92x3.53
KHMGS-32-F6	1 1/4"	32	30	242.5	83.4	81.5	161	105.2	40	86.7	12	80	10.3	54	44	17	60	37.7x3.53
KHMGS-40-F6	1 1/2"	40	38	274	91	84	190	116.2	45	97.7	12	90	12.6	63.5	51	17	70	47.22x3.53
KHMGS-50-F6	2"	50	48	285.5	100	93	192.5	134.2	55.5	115.7	12	111	12.6	79.4	67	17	80	56.74x3.53

SAE split flanges - F6

Type	A	C	D	E	F	M	K	I	G	d	Nominal pressure PN [bar]	Weight [kg]
KHBGS-16-F6	32.5	24.6	16	22	7.2	22.6	8	40.5	55.6	9	420	1.3
KHBGS-20-F6	42	32.5	19	28	8.3	30	11.9	50.8	72	10.5	420	2.5
KHBGS-25-F6	48.4	38.9	24	32	9	35	13.9	57.2	81	13	420	3.5
KHMGS-32-F6	54.8	44.5	27	38	9.8	39	15.9	66.7	96	15	420	6.4
KHMGS-40-F6	64.3	51.6	30	42	12.1	48	18.3	79.4	113	17	420	9.7
KHMGS-50-F6	80.2	67.6	37	52	12.1	57	22.2	96.8	134	21	420	14.7

SAE threaded flanges - F6

Type	S	P	R	N	T	Nominal pressure PN [bar]	Weight [kg]
KHBGS-16-F6	56.5	48	40.5	18.2	M8	420	1.2
KHBGS-20-F6	71.4	60	50.8	23.8	M10	420	2
KHBGS-25-F6	81	70	57.2	27.8	M12	420	3
KHMGS-32-F6	95.3	78	66.6	31.8	M14	420	4.7
KHMGS-40-F6	113	95	79.3	36.5	M16	420	7.3
KHMGS-50-F6	133	114	96.8	44.5	M20	420	11.5

NOTE

The information in this brochure relates to the operating conditions and applications described.

For applications and operating conditions not described, please contact the relevant technical department.

Subject to technical modifications.

HYDAC Accessories GmbH
Hirschbachstr. 2
66280 Sulzbach/Saar
Tel.: +49 (0)6897 - 509-01
Fax: +49 (0)6897 - 509-1009
Internet: www.hydac.com
E-Mail: info@hydac.com