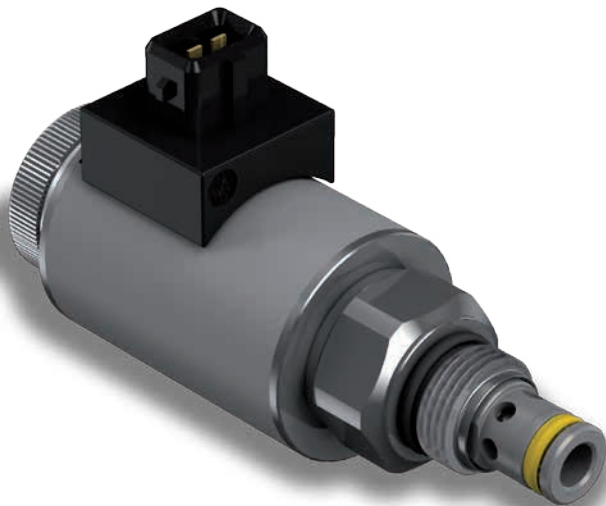


NEW

# EC08T, EC10T, EC16T

2 way proportional flow control valves  
poppet type

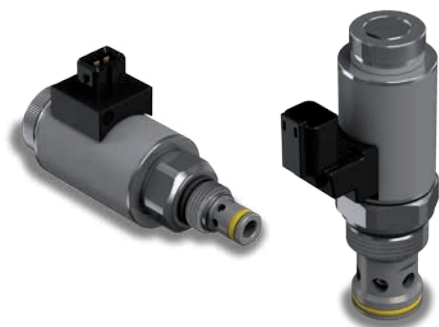


A member of



# EC08T, EC10T, EC16T

## 2 way proportional flow control valves, poppet type

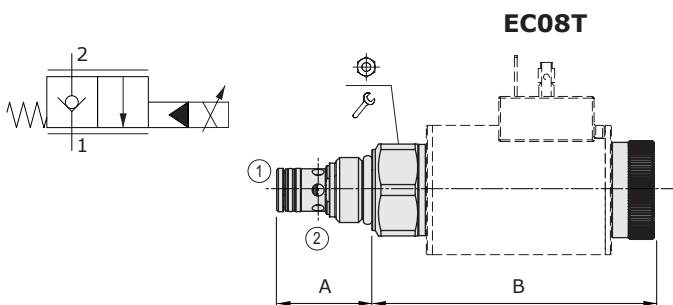


- Pilot operated
- Poppet type
- Normally closed
- 2 ways, not compensated

Technical specifications and diagrams are measured with mineral oil of 46 cSt viscosity at 40°C (104°F) temperature.

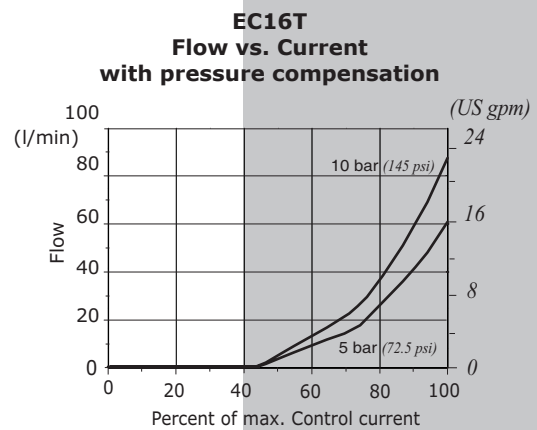
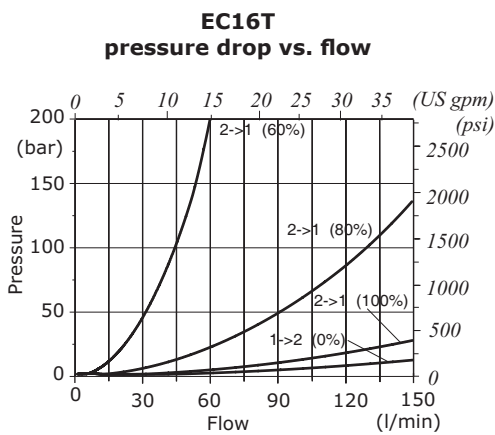
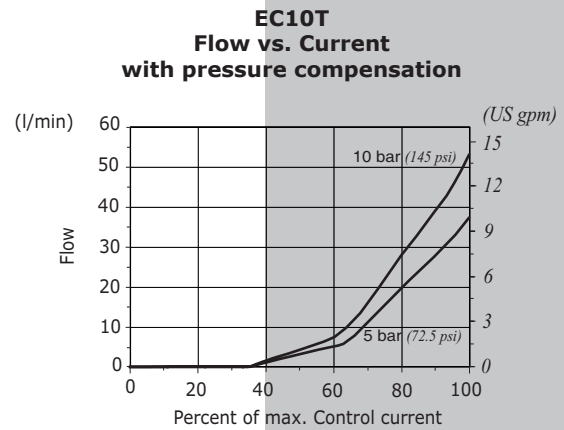
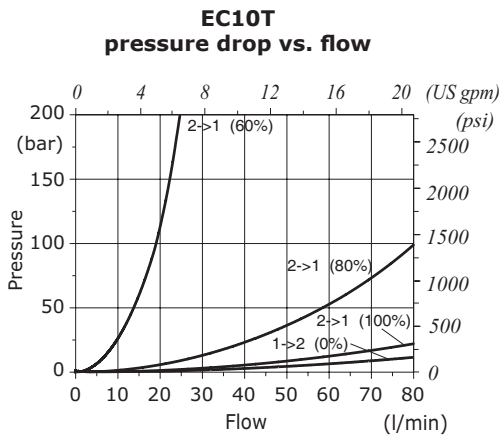
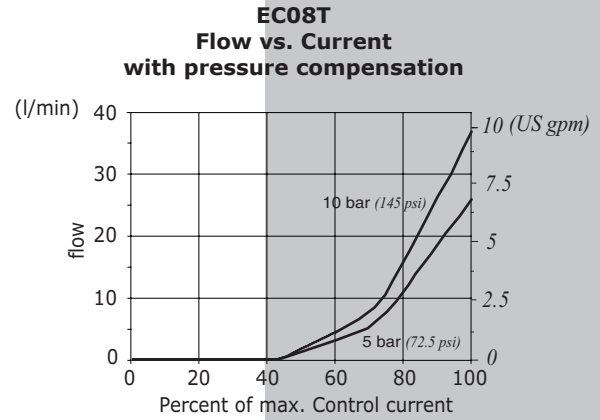
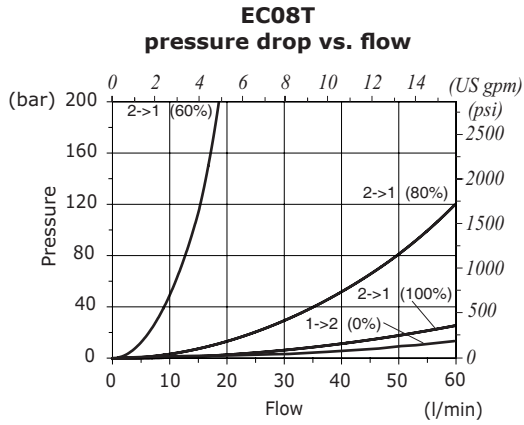
		EC08T	EC10T	EC16T
Nominal flow	at Dp = 5 bar (72 psi)	25 l/min (6.6 US gpm)	35 l/min (9.25 US gpm)	60 l/min (15.85 US gpm)
	at Dp = 10 bar (145 psi)	35 l/min (9.25 US gpm)	50 l/min (13.21 US gpm)	85 l/min (22.45 US gpm)
Max. pressure		350 bar (5100 psi)		
Oil leakage	at 350 bar (5100 psi)	0.25 cm <sup>3</sup> /min (0.015 in <sup>3</sup> /min)	0.25 cm <sup>3</sup> /min (0.015 in <sup>3</sup> /min)	0.35 cm <sup>3</sup> /min (0.021 in <sup>3</sup> /min)
Fluid		mineral based oil		
Viscosity		10-200 cSt		
Max level of contamination		18/16/13 ISO4406		
Fluid temperature	with NBR seals with FPM seals	from -20°C (-4°F) to 80°C (176°F) from -20°C (-4°F) to 100°C (212°F)		
Environmental temp. for working conditions		from -20°C (-4°F) to 50°C (122°F)		
Cavity		SAE 8/2	SAE 10/2	SAE 16/2
Nominal voltages		12 VDC - 24 VDC ± 10%		
Dither frequency		150 Hz		
Max control current		12 V -> 1.70 A - 24 V -> 0.85 A (BH) 12 V -> 1.25 A - 24 V -> 0.63 A (BQP19)		
Weight		0.275 kg (0.61 lb)	0.310 kg (0.68 lb)	0.490 kg (1.08 lb)

NOTE - For different conditions, please contact Walvoil Sales Dpt.



Valve type	A		B		Key symbol	Nm	lbft
	mm	in	mm	in			
EC08T/....	28	1.10	83	3.27	27	30	22
EC10T/....	32.4	1.27	82.9	3.26	27	50	37
EC16T/....	45.5	1.79	81	3.19	38	80	59

## Rating diagrams



# EC08T, EC10T, EC16T

2 way proportional flow control valves, poppet type

