

## DESCRIPTION

A solenoid-operated, 2-way, piloted, poppet-type, normally closed, screw-in hydraulic cartridge valve, intended to act as a blocking or load-holding device for low flow circuits.

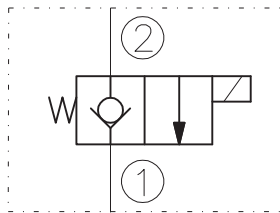
## OPERATION

When de-energized, the EV06-2B acts as a check valve, allowing flow from 1 to 2, while blocking flow from 2 to 1. When energized, the cartridge poppet lifts to open the 2 to 1 flow path. In this mode, flow from 1 to 2 is severely restricted.

## RATINGS

- Operating Pressure: 250bar
- Flow: See Performance Chart
- Internal Leakage: 0,25 cc/minute max. at 250bar
- Temperature: -20°C to 90°C with standard Buna N seals
- Coil Duty Rating: Continuous from 85% to 115% of nominal voltage
- Minimum Pull-in Voltage: 85% of nominal at 250bar
- Filtration: Recommended 25µm nominal or better
- Fluids: Mineral-based or synthetics with lubricating properties at viscosities of 7,4 to 420 cSt
- Installation: No restrictions
- Cavity: CC06-2 ; See "CAVITIES AND BODIES" brochure

## SYMBOL



## CAVITY

See "CAVITIES AND BODIES" brochure

## TO ORDER

EV06-2B

Voltage	Seals
0 - Without coil	N - Buna N
12 - 12V DC	V - Viton A
24 - 24V DC	
11 - 110V RAC	
22 - 220V RAC	

Terminations DIN 43650.  
See "Accessories" brochure

## PERFORMANCE (Cartridge Only)

