

**DESCRIPTION**

A solenoid-operated , 2-way , direct-acting , seat-type , normally opened , screw-in , hydraulic cartridge valve designed to function as bidirectional blocking valve for low leakage in load-holding applications.

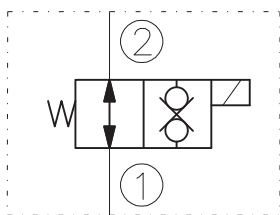
**OPERATION**

When de-energized , the valve's spool shifts to open the bidirectional flow path. When energized , the EV06-2WF stops flow in both directions.

**RATINGS**

- Operating Pressure: 210bar
- Flow: See Performance Chart.
- Internal Leakage: 5 drops/minute max. at 210bar
- Temperature: -20°C to 90°C with standard Buna N seals
- Coil Duty Rating: Continuous from 85% to 115% of nominal voltage
- Minimum Pull-in Voltage: 85% of nominal at 210bar
- Filtration: Recommended 25µm nominal or better
- Fluids: Mineral-based or synthetics with lubricating properties at viscosities of 7,4 to 420 cSt
- Installation: No restrictions
- Cavity: CC06-2 ; See "CAVITIES AND BODIES" brochure

**SYMBOL**



**CAVITY**

See "CAVITIES AND BODIES" brochure

**TO ORDER**

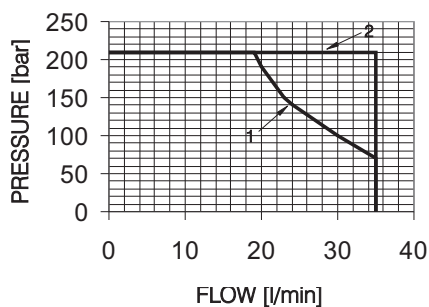
EV10-2WF

<p><b>Voltage</b></p> <ul style="list-style-type: none"> <li>0 - Without coil</li> <li>12 - 12V DC</li> <li>24 - 24V DC</li> <li>11 - 110V RAC</li> <li>22 - 220V RAC</li> </ul>	<p><b>Seals</b></p> <ul style="list-style-type: none"> <li>N - Buna N</li> <li>V - Viton A</li> </ul>
----------------------------------------------------------------------------------------------------------------------------------------------------------------------------------	-------------------------------------------------------------------------------------------------------

Terminations DIN 43650.  
See "Accessories" brochure

**PERFORMANCE (Cartridge Only)**

curve 2 - 1 to 2  
curve 1 - 2 to 1  
32cSt oil at 40°C



De-energized  
32cSt oil at 40°C

