

DESCRIPTION

A solenoid-operated, 2-way, direct-acting, spool-type, normally open, screw-in, hydraulic cartridge valve designed to function as bidirectional blocking valve.

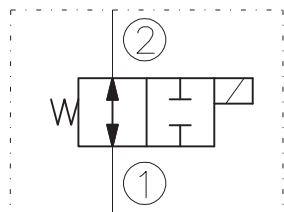
OPERATION

When de-energized, the EV10-2KF allows flow in both directions. When energized, the valve's spool shifts to close the bidirectional flow path.

RATINGS

- Operating Pressure: 210bar
- Flow: See Performance Chart.
- Internal Leakage: 82 cc/minute max. at 210bar
- Temperature: -20°C to 90°C with standard Buna N seals
- Coil Duty Rating: Continuous from 85% to 115% of nominal voltage
- Minimum Pull-in Voltage: 85% of nominal at 210bar
- Filtration: Recommended 25µm nominal or better
- Fluids: Mineral-based or synthetics with lubricating properties at viscosities of 7,4 to 420 cSt
- Installation: No restrictions
- Cavity: CC10-2 ; See "CAVITIES AND BODIES" brochure

SYMBOL



CAVITY

See "CAVITIES AND BODIES" brochure

TO ORDER

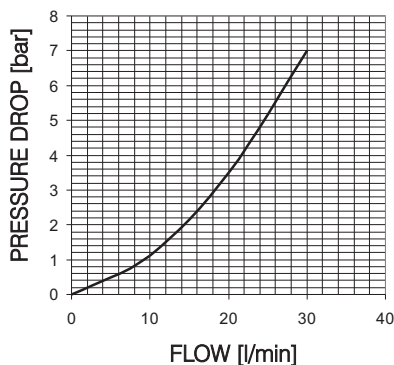
EV10-2KF

<p>Voltage</p> <ul style="list-style-type: none"> 0 - Without coil 12 - 12V DC 24 - 24V DC 11 - 110V RAC 22 - 220V RAC 	<p>Seals</p> <ul style="list-style-type: none"> N - Buna N V - Viton A
--	---

Terminations DIN 43650.
See "Accessories" brochure

PERFORMANCE (Cartridge Only)

De-energized
32cSt oil at 40°C



1 to 2 - curve 2
2 to 1 - curve 1
32cSt oil at 40°C

