

## DESCRIPTION

A solenoid-operated, 2-way, direct-acting, spool-type, normally closed, screw-in, hydraulic cartridge valve designed to function as bidirectional blocking valve in high flow circuits.

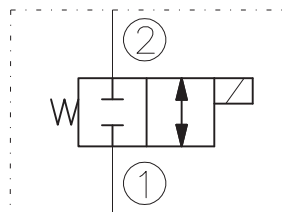
## OPERATION

When de-energized, the EV10-2LH stops flow in both directions. When energized, the valve's spool shifts to open the bidirectional flow path.

## RATINGS

- Operating Pressure: 210bar
- Flow: See Performance Chart.
- Internal Leakage: 82 cc/minute max. at 210bar
- Temperature: -20°C to 90°C with standard Buna N seals
- Coil Duty Rating: Continuous from 85% to 115% of nominal voltage
- Minimum Pull-in Voltage: 85% of nominal at 210bar
- Filtration: Recommended 25µm nominal or better
- Fluids: Mineral-based or synthetics with lubricating properties at viscosities of 7,4 to 420 cSt
- Installation: No restrictions
- Cavity: CC10-2 ; See "CAVITIES AND BODIES" brochure

## SYMBOL



## CAVITY

See "CAVITIES AND BODIES" brochure

## TO ORDER

EV10-2LH

<p><b>Voltage</b></p> <ul style="list-style-type: none"> <li>0 - Without coil</li> <li>12 - 12V DC</li> <li>24 - 24V DC</li> <li>11 - 110V RAC</li> <li>22 - 220V RAC</li> </ul>	<p><b>Seals</b></p> <ul style="list-style-type: none"> <li>N - Buna N</li> <li>V - Viton A</li> </ul>
--	---

Terminations DIN 43650.  
See "Accessories" brochure

## PERFORMANCE (Cartridge Only)

