

**DESCRIPTION**

A solenoid-operated, 3-way, direct-acting, spool-type, screw-in, hydraulic cartridge valve.

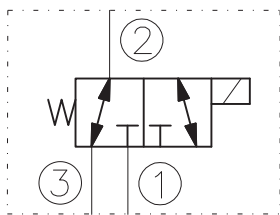
**OPERATION**

When de-energized, the EV10-3MF allows flow from 2 to 3, while blocking flow at 1.  
When energized, the valve's spool shifts to open from 2 to 1, while blocking at 3.

**RATINGS**

- Operating Pressure: 210bar
- Flow: See Performance Chart.
- Internal Leakage: 82 cc/minute max. at 210bar
- Temperature: -20°C to 90°C with standard Buna N seals
- Coil Duty Rating: Continuous from 85% to 115% of nominal voltage
- Minimum Pull-in Voltage: 85% of nominal at 210bar
- Filtration: Recommended 25µm nominal or better
- Fluids: Mineral-based or synthetics with lubricating properties at viscosities of 7,4 to 420 cSt
- Installation: No restrictions
- Cavity: CC10-3 ; See "CAVITIES AND BODIES" brochure

**SYMBOL**



**CAVITY**

See "CAVITIES AND BODIES" brochure

**TO ORDER**

EV10-3MF

- Voltage**
- 0 - Without coil
  - 12 - 12V DC
  - 24 - 24V DC
  - 11 - 110V RAC
  - 22 - 220V RAC

- Seals**
- N - Buna N
  - V - Viton A

Terminations DIN 43650.  
See "Accessories" brochure

**PERFORMANCE (Cartridge Only)**

curve 2 - 2 to 1  
curve 1 - 2 to 3 ; 3 to 2 ; 1 to 2  
32cSt oil at 50°C

curve 2 - 2 to 1 ; 1 to 2  
curve 1 - 2 to 3 ; 3 to 2  
32cSt oil at 50°C

