

DESCRIPTION

A solenoid-operated, 3-way, direct-acting, spool-type, screw-in, hydraulic cartridge valve.

OPERATION

When de-energized, the EV58-3D allows flow from 3 to 1, while blocking flow at 2.

When energized, the valve's spool shifts to open from 2 to 3, while blocking at 1.

RATINGS

Operating Pressure: 210bar

Flow: 8 l/min max.

Internal Leakage: 82 cc/minute max. at 210bar

Temperature: -20°C to 90°C with standard Buna N seals

Coil Duty Rating: Continuous from 85% to 115% of nominal voltage

Minimum Pull-in Voltage: 85% of nominal at 210bar

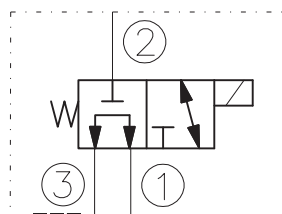
Filtration: Recommended 25 μ m nominal or better

Fluids: Mineral-based or synthetics with lubricating properties at viscosities of 7,4 to 420 cSt

Installation: No restrictions

Cavity: CC08-3 ; See "CAVITIES AND BODIES" brochure

SYMBOL



CAVITY

See "CAVITIES AND BODIES" brochure

TO ORDER

EV58-3D

Voltage	Seals
0 - Without coil	N - Buna N
12 - 12V DC	V - Viton A
24 - 24V DC	
11 - 110V RAC	
22 - 220V RAC	

Terminations DIN 43650.

See "Accessories" brochure

PERFORMANCE (Cartridge Only)

