

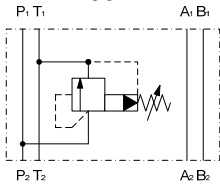


Pressure Relief Valve pilot operated Sandwich plate type ZW-DB06

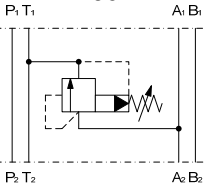
Pmax = 350 bar
Qmax = 75 l/min

SYMBOL

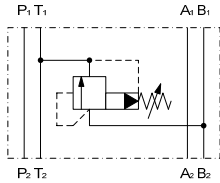
ZW-DB06 PT



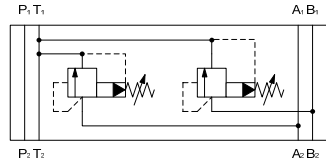
ZW-DB06 AT



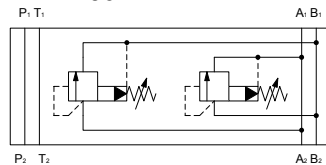
ZW-DB06 BT



ZW-DB06 ABT

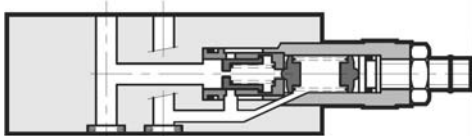


ZW-DB06 AB



Function

P1 T1



P2 T2

FEATURES

- Hole pattern according to DIN 24340 Form A6, ISO 4401-03, nominal size 06
- Pressure relief valve sandwich plate type with single side relief function and drain to tank
- easy to assemble under body mounted spool valves according to DIN 24340 Form A6, ISO 4401 (use longer screws)
- type according to ISO 7790
- adjustable by tool

Types

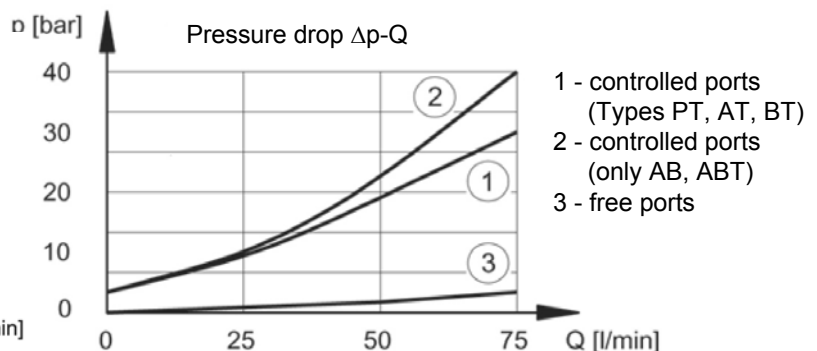
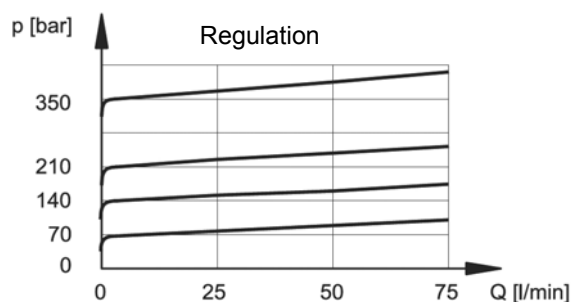
- type PT: Pressure relief in P, Drain T
- type AT: Pressure relief in A, Drain T
- type BT: Pressure relief in B, Drain T
- type ABT: Pressure relief in A-B (double), Drain T
- type AB: Pressure relief in B, Drain and relief in A, Drain in B

SPECIFICATIONS

Operating pressure:	max. 350 bar
Adjusting pressure ranges:	up to 70, 140, 210, 350 bar
Nominal flow:	max. 75 l/min
Fluids:	hydraulic oil according to DIN 51524 Part 1 and 2
Media operating temp. range:	-20°C up to max. +80°C
Ambient temperature range:	-20°C up to max. +50°C
Viscosity range:	10 – 400 mm ² /s is recommended
Filtration:	Class 20/18/15 to ISO 4406 or cleaner
MTTF _d :	150 (a) years
Weight:	1,4 kg incl. valve (AB, ABT = 2,1 kg)

PERFORMANCE

measured at $v = 32\text{mm}^2/\text{s}$ and $T_{oil} = 50^\circ\text{C}$



(Index 1 = valve side / Index 2 = sub plate side)

Standard models

Standard models	Part No.
ZW-DB06-01-PT 350V-V	6074657
ZW-DB06-01-AT 350V-V	6074661
ZW-DB06-01-BT 350V-V	6074664
ZW-DB06-01-AB 350V-V	6074667
ZW-DB06-01-ABT 350V-V	6074670
Other types on request	

MODEL CODE

ZW-DB06 - 01 - PT - 140V - V
Name and nominal size _____
 Pilot operated pressure relief valve
 Sandwich plate type NW6

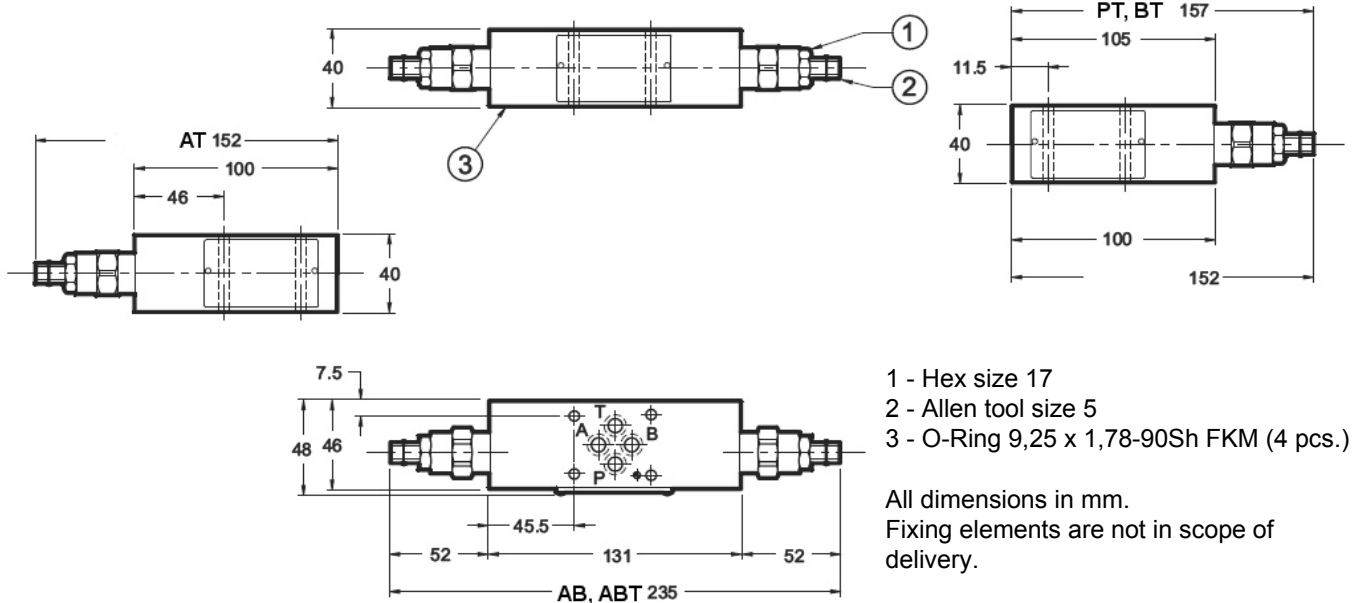
Series _____
 01 = Standard, phosphated

Types _____
 - type PT: Pressure relief in P, Drain T
 - type AT: Pressure relief in A, Drain T
 - type BT: Pressure relief in B, Drain T
 - type ABT: Pressure relief in A-B (double), Drain T
 - type AB: Pressure relief in A-B (double), Drain B/A

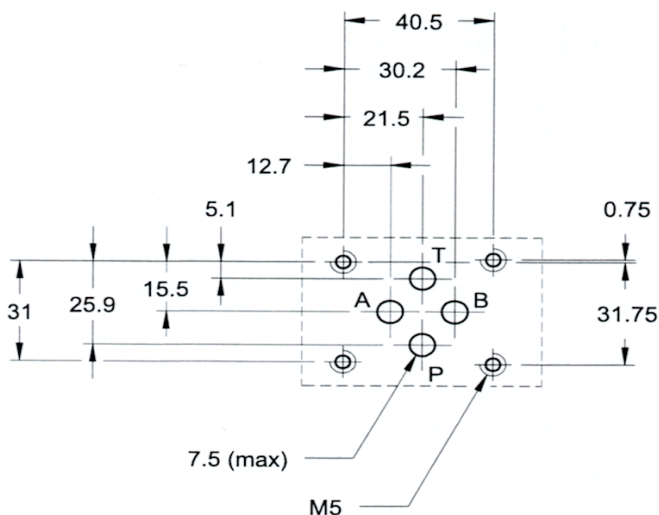
Pressure ranges _____
 70 = 70 bar
 140 = 140 bar
 210 = 210 bar
 350 = 350 bar

Seals _____
 V = FKM (Standard)
 N = NBR

Dimensions



Mounting plate according to ISO 4401-03



Annotation
 The information in this brochure relates to the operating conditions and applications described. For applications or operating conditions not described, please contact the relevant technical department. Subject to technical modifications.

HYDAC Fluidtechnik GmbH
 Justus-von-Liebig-Str. 5
 D - 66280 Sulzbach / Saar
 Tel. 06897 / 509 -01
 Fax 06897 / 509 -598
 Email flutec@hydac.com