

# FHL 01

## KNUCKLE JOINT LINK

STATIC  
LOAD



55 kN

WEIGHT



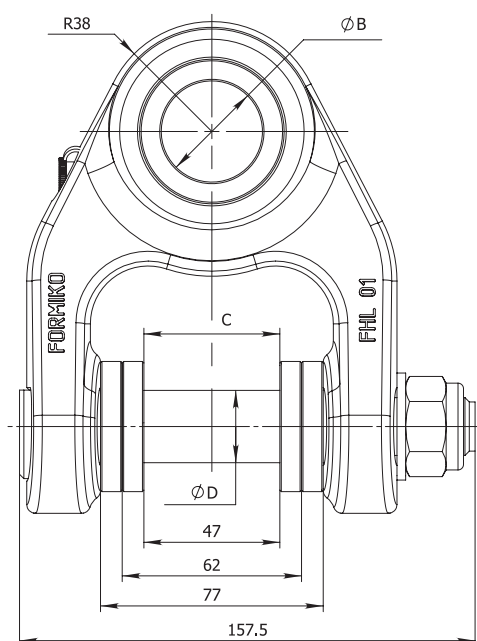
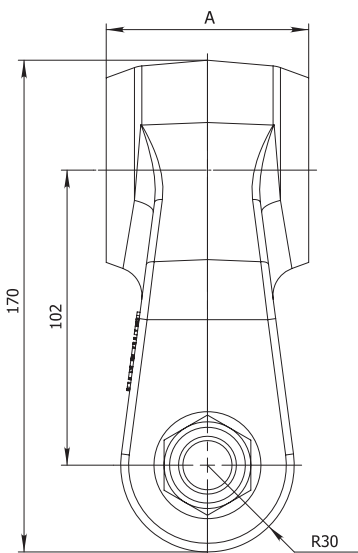
4.5 kg



FORGED  
STEEL

FHL01- A / B - C / D

A	B	C	D
80	45	45	25
70	40	60	30
60	35	73	
	30		
	25		



The body of FHL01 knuckle joint link is made from shock resistant FORGED STEEL to improve reliability and equipped with bronze bushings to extend lifetime.

Pin locking nut has to be tightened with a torque of 120 Nm

Fill grease through grease nipples until it will appear to the external surfaces.

Greasing must be repeated after every 8 working hours of the link.



FORESTRY



AGRICULTURE



CONSTRUCTION



GENERAL CARGO



RECYCLING