

# FHL 02

## KNUCKLE JOINT LINK

STATIC  
LOAD



100 kN

WEIGHT



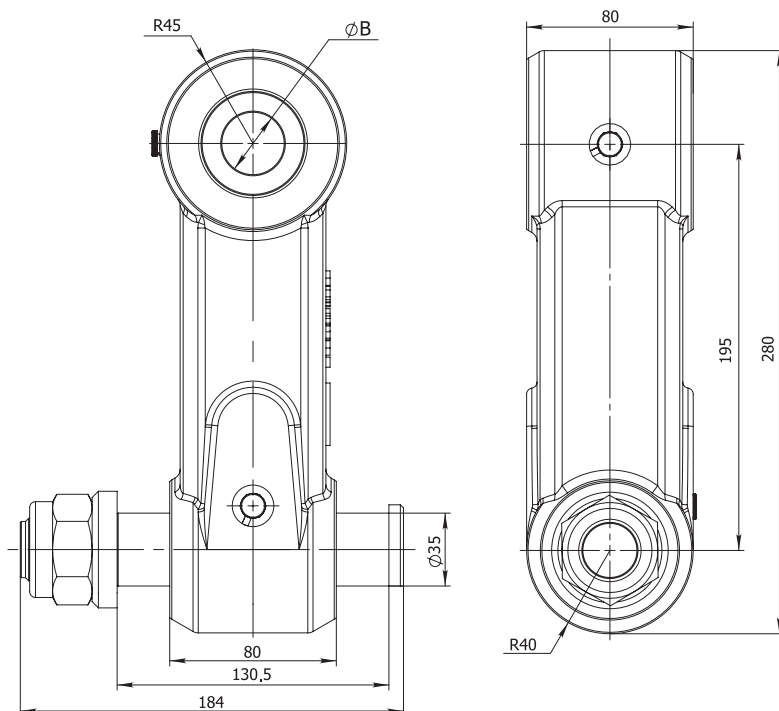
11 kg



FORGED  
STEEL



LINK NAME	B	WEIGHT
FHL 02-45	45	11.12
FHL 02-40	40	11.29
FHL 02-35	35	11.43
FHL 02-30	30	11.55



The body of FHL02 knuckle joint link is made from shock resistant FORGED STEEL to improve reliability and equipped with bronze bushings to extend lifetime.

Pin locking nut has to be tightened with a torque of 120 Nm

Fill grease through grease nipples until it will appear to the external surfaces.

Greasing must be repeated after every 8 working hours of the link.



FORESTRY



AGRICULTURE



CONSTRUCTION



GENERAL CARGO



RECYCLING