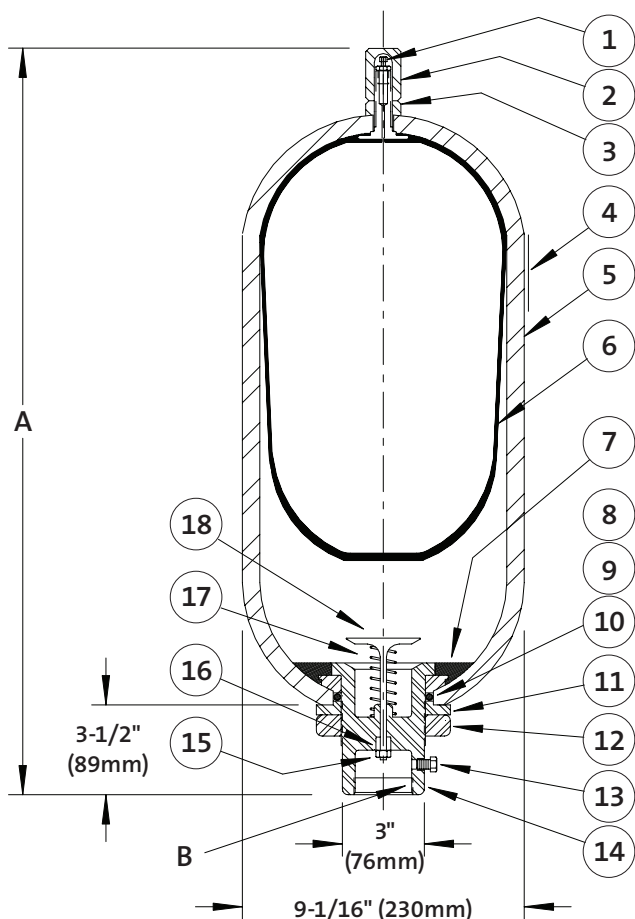


TBR30 BLADDER ACCUMULATORS

Model Number	Gas Capacity		Fluid Capacity		Dry Weight		Dimension A		Dimension B
	In. ³	Cm. ³	Gallon	Liters	Lbs.	Kg.	Inch	mm	
TBR30-2.5NMFA	600	9832	2.5	10	80	36	21	533	SAE-24 STANDARD 2" NPT OPTIONAL TO SPECIFY 2" NPT, REPLACE "F" WITH "A"
TBR30-5NMFA	1,203	19,714	5.0	19	120	54	33.25	845	
TBR30-10NMFA	2,259	37,018	10	38	220	100	54	1,372	
TBR30-11NMFA	2,535	41,541	11	42	240	109	59.5	1,511	
TBR30-15NMFA	3,440	56,372	15	57	305	138	77.5	1,969	



Maximum working pressure 3,000 psi (207 bar)
 Maximum proof pressure 4,500 psi (310 bar)
 Minimum burst pressure 12,000 psi (827 bar)

Operating temperature (BUNA/Nitrile)
 -20° to +200°F (-28° to 93°C)

Bladder for petroleum base oil. Shell ASME "U" stamped.
 Appendix 22 MAWP 4,000 psi (276 bar).
 Interchangeable with most other brands.

TOBUL ACCUMULATOR INCORPORATED
www.fst.com

Item Number	Part Number	Description	Number Required
1	3A-282	SS Valve, Gas, 3K	1
2	TB-210-PC	Guard, Gas Valve, 3K, Phosphate Coated	1
3	TB-220	Lock Nut, Adaptor, Zinc Coated	1
4	NP-200	Nameplate	1
5	NOT AVAILABLE SEPARATELY	Shell, Bottom Repairable	1
6	BB30-2.5N	Bladder, BUNA-N	1
7	TB-925-N	Ring, Anti-Extrusion, BUNA-N	1
8	TB-125M	Ring, Backup, Stainless Steel	1
9	S03N50	Seal, O-Ring, BUNA-N	1
10	SB3T50	Seal, Backup, Teflon	1
11	TB-975-PC	Spacer, Phosphate Coated	1
12	TB-850-PC	Ring, Lock, Phosphate Coated	1
13	SB3T50	Plug, Bleeder, SAE-6	1
14	TB-950-PC	Oil Port Body, SAE-24, Phosphate Coated	1
Opt.	PG-CH-2	Plug, Bleeder, 1/4" NPT	Opt.
Opt.	TB-950-P-PC	Oil Port Body, 2" NPT, Phosphate Coated	Opt.
15	TB-705	SS Lock Nut, Poppet Valve	1
16	TB-750	SS Piston, Poppet Valve	1
17	TB-150	SS Spring, Poppet Valve	1
18	TB-205	SS Poppet, Oil Port Valve	1

Specify bladder and seal material by selecting appropriate material code: "N" = BUNA-N, "B" = BUTYL, "E" = EPR, "V" = FKM (Viton®)

Complete repair kits for Bottom Repairable Models — 2.5, 5, 10, 11 and 15 gallons

New Part Number	Type	Old Part Number
BK30-*N	BUNA-N	RB30-*NT
BK30-*V	FKM (Viton®)	RB30-*ET
BK30-*B	BUTYL	RB30-*BT
BK30-*E	EPR	RB30-*HT

* Denotes insertion point for unit volume designation, i.e., 2.5 = 2.5 gallon volume.
 Repair kit includes: (1) Bladder, (1) Gas Valve & O-Ring, (2) Oil Port Body O-Ring, and (2) O-Ring Backup and (1) Anti-extrusion Ring.