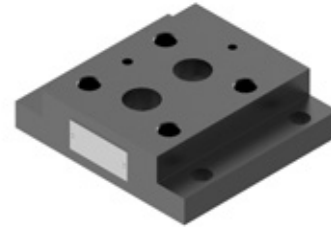


DATA SHEET - OPERATION MANUAL

APPLICATION

Subplates type G409/01 are intended for threaded connection of pressure relief valves of nominal size 20 (NS20), with porting pattern compliant with ISO 6264 - 08.



DESCRIPTION OF OPERATION

Subplates type G409/01 are used for threaded connection of pressure relief valves of nominal size 20 with porting pattern compliant with:

- PN - ISO 6264 -08-13-1-97 (ISO 6264 - 08)
- CETOP- RP 121H - 4.4.2-2- R08 (CETOP R08)
- DIN 24340 form E (NG25)

The table below lists examples of nominal size 20 products offered by PONAR Wadowice S.A., for which the plate G409 /01 is intended

name	type	WK number
pressure relief valve	DB20	WK 420 140
pressure relief valve	DBW20	WK 420 140

HOW TO ORDER

Subplate for the pressure relief valve of nominal size 20 must be ordered by type:

type	weight
G409/01	4,5 kg

Fixing screws of the pressure relief valve M16 x 50 - 10.9 acc. to PN - EN ISO 4762 (PN/M - 82302) pcs. 4/set delivered on separate order.

Coding example of a subplate for pressure relief valves of nominal size 20 with porting pattern according to ISO 6264 - 08 with G1 threaded connection:

subplate type G409/01

OVERALL AND CONNECTION DIMENSIONS

1. mounting surface of the pressure relief valve
2. holes for fixing screws of the valve; tightening torque of the screws $M_d = 310 \text{ Nm}$
3. connections

functions of ports P, T, X:

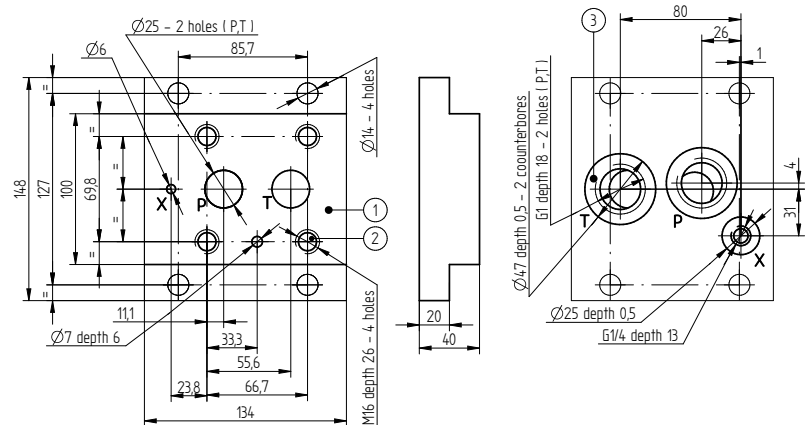
P - pump connection

T - oil drain to the tank

X* - supply of the control flow (external)

(*) - only for versions: DB20.../...X...;

DB20.../...XY; DBW20.../...X...; DBW20 .../...XY...



KONTAKT

PONAR Wadowice S.A.
ul. Wojska Polskiego 29
34-100 Wadowice

tel. +48 33 488 21 00
www.ponar-wadowice.pl