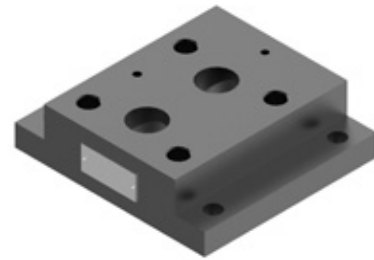


DATA SHEET - OPERATION MANUAL

APPLICATION

Subplates type G411/01 are intended for threaded connection of pressure relief valves of nominal size 30 (WN30), with porting pattern compliant with ISO 6264 - 10.



DESCRIPTION OF OPERATION

Subplates type G411/01 are used for threaded connection of pressure relief valves of nominal size 30 with porting pattern compliant with:

- PN - ISO 6264 -10-17-1-97 (ISO 6264 - 10)
- CETOP- RP 121H - 4.4.2-2- R10 (CETOP R10)
- DIN 24340 form E (NG32)

The table below lists examples of nominal size 30 products offered by PONAR Wadowice S.A., for which the plate G411 / 01 is intended.

| name | type | WK number |
|-----------------------|-------|------------|
| pressure relief valve | DB30 | WK 420 140 |
| pressure relief valve | DBW30 | WK 420 140 |

HOW TO ORDER

Subplate for the pressure relief valve of nominal size 30 must be ordered by type:

| type | weight |
|---------|--------|
| G411/01 | 7,5 kg |

Fixing screws of the pressure relief valve M18 x 50 - 10.9 acc. to PN - EN ISO 4762 (PN/M - 82302) pcs. 4/set delivered on separate order

Coding example of a subplate for pressure relief valves of nominal size 30 with porting pattern to ISO 6264 - 10 with G1 1/2 threaded connection:

subplate type G411/01

OVERALL AND CONNECTION DIMENSIONS

1. mounting surface of the pressure relief valve
2. holes for fixing screws of the valve; tightening torque of the screws $Md = 430 \text{ Nm}$
3. connections according to PN - EN ISO 1179 - 1 (thread compliant with PN - EN ISO 228 -1)

functions of ports P, T, X:

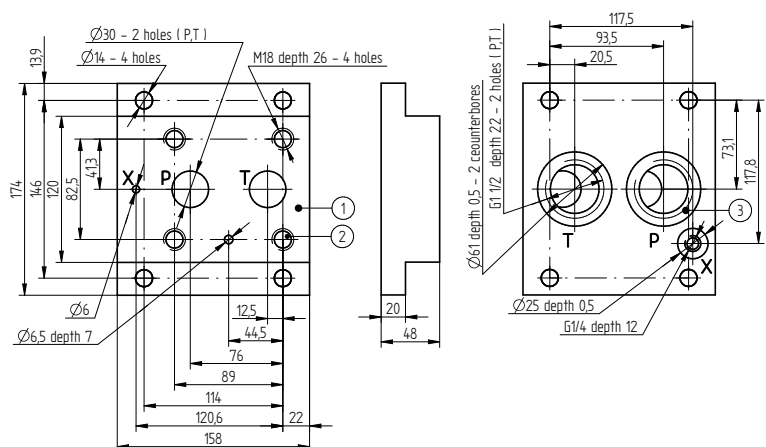
P - pump connection

T - oil drain to the tank

X* - supply of the control flow (external)

(*) - only for versions: DB30.../...X...;

DB30.../...XY; DBW30.../...X...; DBW30 .../...XY...



KONTAKT

PONAR Wadowice S.A.
ul. Wojska Polskiego 29
34-100 Wadowice

tel. +48 33 488 21 00
www.ponar-wadowice.pl