




+ SBT

2-WAY HIGH PRESSURE BALL VALVES

**ALSO AVAILBLE
IN FULLY
WELDED VERSION**



CARBON STEEL

- Type: ball valve SBT ANSI B16.5 
- Body: forging
- Material: A105/F316
- Ball seats: from DN13 up to DN589
- O-Rings: NBR, FKM, EPDM, MVQ
- Operating pressure: 20 Bar - 50 Bar - 100 Bar
150 Bar - 250 Bar - 420 Bar
- Antistatic device
- Fire safe BS 6755

SBT ANSI600 2" DN50 FB A105 F316 RPTFE NBR RF

Type and way of valve	Valves dimension of pressure (lbs)	Inch	Nominal dimension from DN 13 up to DN 589	Bore	Body material	Stem material	Ball seat material	Adapter and stem seal material	Flanged
SBT	ANSI2500	from 2" up to 36"	from DN 13 up to DN 589	FB	A105	A105	RPTFE	NBR	RF
Split body	ANSI1500			full bore	LF2	LF2	PEEK	FKM	RTJ
trunnion	ANSI900			RB		F316	NYLON	EPDM	BW
bolted body	ANSI600			reduce bore		F51	DEVLON	MVQ	FF
	ANSI300					F304			
	ANSI150						MET-TO-MET		

STAINLESS STEEL

- Type: ball valve SBT ANSI B16.5 
- Body: forging
- Material: F316/F51
- Ball seats: from DN13 up to DN589
- O-Rings: NBR, FKM, EPDM, MVQ
- Operating pressure: 20 Bar - 50 Bar - 100 Bar
150 Bar - 250 Bar - 420 Bar
- Antistatic device
- Fire safe BS 6755

SBT ANSI600 2" DN50 FB F316 F51 RPTFE NBR RF

Type and way of valve	Valves dimension of pressure (lbs)	Inch	Nominal dimension from DN 13 up to DN 589	Bore	Body material	Stem material	Ball seat material	Adapter and stem seal material	Flanged
SBT	ANSI2500	from 2" up to 36"	from DN 13 up to DN 589	FB	F316	A105	RPTFE	NBR	RF
Split body	ANSI1500			full bore	F51	F316	PEEK	FKM	RTJ
trunnion	ANSI900			RB	F304	F51	NYLON	EPDM	BW
bolted body	ANSI600			reduce bore		F304	DEVLON	MVQ	FF
	ANSI300								
	ANSI150						MET-TO-MET		

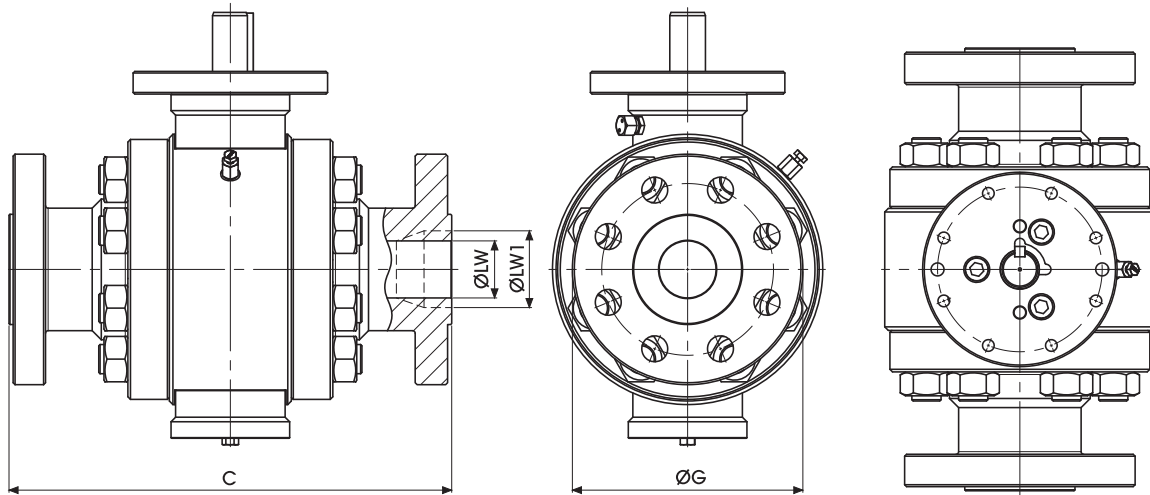
SBT



+ SBT150 2-WAY HIGH PRESSURE BALL VALVES

**ALSO AVAILABLE
IN FULLY
WELDED VERSION**

Specialist in Ball Valves



SBT 150 FB

Standard

TYPE	PN	INCH	LW	LW1	C RF	C RTJ	G
SBT A150	2 Mpa	2	49	-	178	191	150
SBT A150	2 Mpa	2 1/2	62	-	191	203	180
SBT A150	2 Mpa	3	74	-	203	216	190,5
SBT A150	2 Mpa	4	100	-	229	241	229

SBT 150 RB

Standard

TYPE	PN	INCH	LW	LW1	C RF	C RTJ	G
SBT A150	2 Mpa	2x1 1/2	38	49	178	191	150
SBT A150	2 Mpa	3x2 1/2	62	74	203	216	190
SBT A150	2 Mpa	3x2	49	74	203	216	190
SBT A150	2 Mpa	6x4	100	150	394	406	280

SPLIT BODY ANSI150 PN20 FULL AND REDUCED BORE

COMPONENTS	MATERIAL	MIN/MAX TEMP. (°C)
BODY AND FLANGE	ASTM A105	-20°+120°
	ASTM A105N	-29°+120°
	ASTM A182 F316	-60°+230°
	ASTM A350 LF2	-40°+100°
STEM	ASTM A479 Tp316	-60°+230°
BALL	ASTM A182 F316	-60°+230°
STEM SEALS	PTFE	-196°+230°
	GRAPHITE	-
BALL SEATS	RPTFE	-196°+230°
	PEEK	-50°+250°
	NYLON	-40°+90°
	DEVLON	-40°+150°
	METAL-TO-METAL	-60°+230°
O-RING	NBR	-30°+100°
	FKM	-40°+200°
	EPDM	-50°+150°
	MVQ	-50°+150°
STUD/NUT	ASTM A193 B7/Gr. 2H	
	ASTM A193 B8/Gr. 8	
	ASTM A320 L7/Gr. 7	

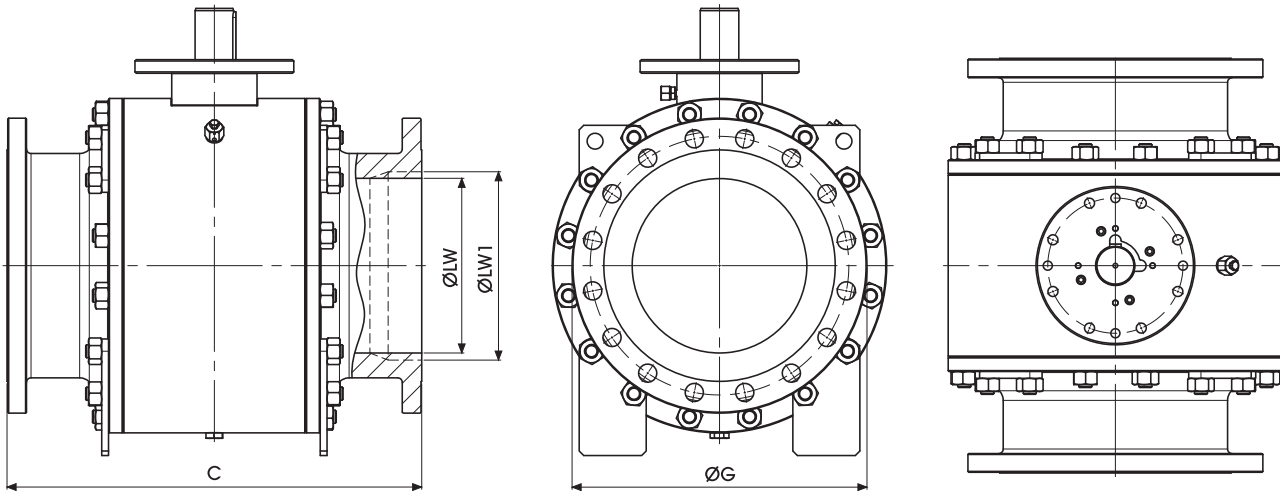
PROVISIONS

API-6D ANSI B16.34 Specification for pipeline valves
API 598 Valve inspection and test
ANSI B.16.34 Steel valves Flanged and butt welding ends
ANSI B16.5 Steel pipe flanges and flanged fittings
ANSI B16.10 Face to face and end to end dimensions of ferrous valves
ASTM American society for testing materials
BS 6755 Testing of valves
NACE MR-01-75 Sulfide stress cracking resistant metallic materials for oil field equipment
UNI EN ISO 9001 quality system
DIN/ISO 5211 for mounting

"The company reserves the right to operate dimensional changes without prior notice".

+ SBT150 2-WAY HIGH PRESSURE BALL VALVES

www.gemels.it



SBT 150 FB

Standard

TYPE	PN	INCH	LW	LW1	C RF	C RTJ	G
SBT A150	2 Mpa	6	150	-	394	406	280
SBT A150	2 Mpa	8	201	-	457	470	345
SBT A150	2 Mpa	10	252	-	533	546	405
SBT A150	2 Mpa	12	303	-	610	622	485
SBT A150	2 Mpa	14	334	-	689	699	533,5
SBT A150	2 Mpa	16	385	-	762	775	597
SBT A150	2 Mpa	18	436	-	864	876	635
SBT A150	2 Mpa	20	487	-	914	927	698,5
SBT A150	2 Mpa	22	538	-	-	-	750*
SBT A150	2 Mpa	24	589	-	1067	1080	813
SBT A150	2 Mpa	26	635	-	1143	-	-
SBT A150	2 Mpa	28	686	-	1245	-	-
SBT A150	2 Mpa	30	737	-	1295	-	-
SBT A150	2 Mpa	32	781	-	1372	-	-
SBT A150	2 Mpa	34	832	-	1473	-	-
SBT A150	2 Mpa	36	876	-	1524	-	-

SBT 150 RB

Standard

TYPE	PN	INCH	LW	LW1	C RF	C RTJ	G
SBT A150	2 Mpa	8x6	150	201	457	470	345
SBT A150	2 Mpa	10x8	201	252	533	546	405
SBT A150	2 Mpa	12x10	252	303	610	622	485
SBT A150	2 Mpa	14x10	252	334	689	699	533,5
SBT A150	2 Mpa	16x12	303	385	762	775	597
SBT A150	2 Mpa	18x14	334	436	864	876	635
SBT A150	2 Mpa	20x16	385	487	914	927	698,5
SBT A150	2 Mpa	24x20	487	589	1067	1080	813
SBT A150	2 Mpa	28x24	589	684	1245	-	925*
SBT A150	2 Mpa	30x24	591	737	1295	-	-
SBT A150	2 Mpa	36x30	737	876	1524	-	-

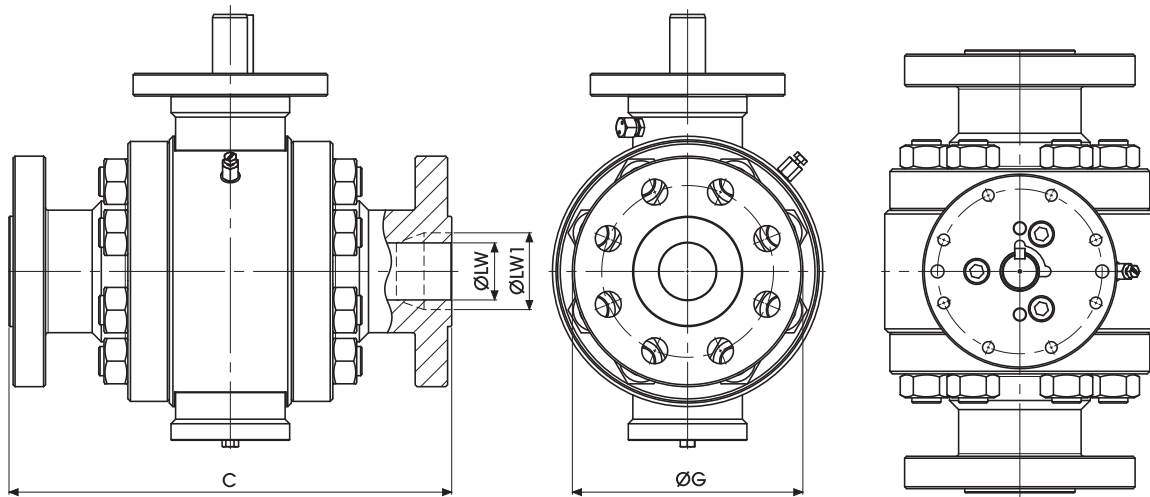
* according to MSS SP44

SBT

+ SBT300 2-WAY HIGH PRESSURE BALL VALVES

**ALSO AVAILABLE
IN FULLY
WELDED VERSION**

Specialist in Ball Valves



SBT 300 FB

Standard

TYPE	PN	INCH	LW	LW1	C RF	C RTJ	G
SBT A300	5 Mpa	2	49	-	216	232	165
SBT A300	5 Mpa	2 1/2	62	-	241	257	190
SBT A300	5 Mpa	3	74	-	283	298	210
SBT A300	5 Mpa	4	100	-	305	321	255

SBT 300 RB

Standard

TYPE	PN	INCH	LW	LW1	C RF	C RTJ	G
SBT A300	5 Mpa	2x1 1/2	38	49	216	232	165
SBT A300	5 Mpa	3x2 1/2	62	74	283	298	210
SBT A300	5 Mpa	3x2	49	74	283	298	210
SBT A300	5 Mpa	6x4	100	150	403	419	320

SPLIT BODY ANSI300 PN50 FULL AND REDUCED BORE

COMPONENTS	MATERIAL	MIN/MAX TEMP. (°C)
BODY AND FLANGE	ASTM A105	-20°+120°
	ASTM A105N	-29°+120°
	ASTM A182 F316	-60°+230°
	ASTM A350 LF2	-40°+100°
STEM	ASTM A479 Tp316	-60°+230°
BALL	ASTM A182 F316	-60°+230°
STEM SEALS	PTFE	-196°+230°
	GRAPHITE	-
BALL SEATS	RPTFE	-196°+230°
	PEEK	-50°+250°
	NYLON	-40°+90°
	DEVLON	-40°+150°
	METAL-TO-METAL	-60°+230°
O-RING	NBR	-30°+100°
	FKM	-40°+200°
	EPDM	-50°+150°
	MVQ	-50°+150°
STUD/NUT	ASTM A193 B7/Gr. 2H	
	ASTM A193 B8/Gr. 8	
	ASTM A320 L7/Gr. 7	

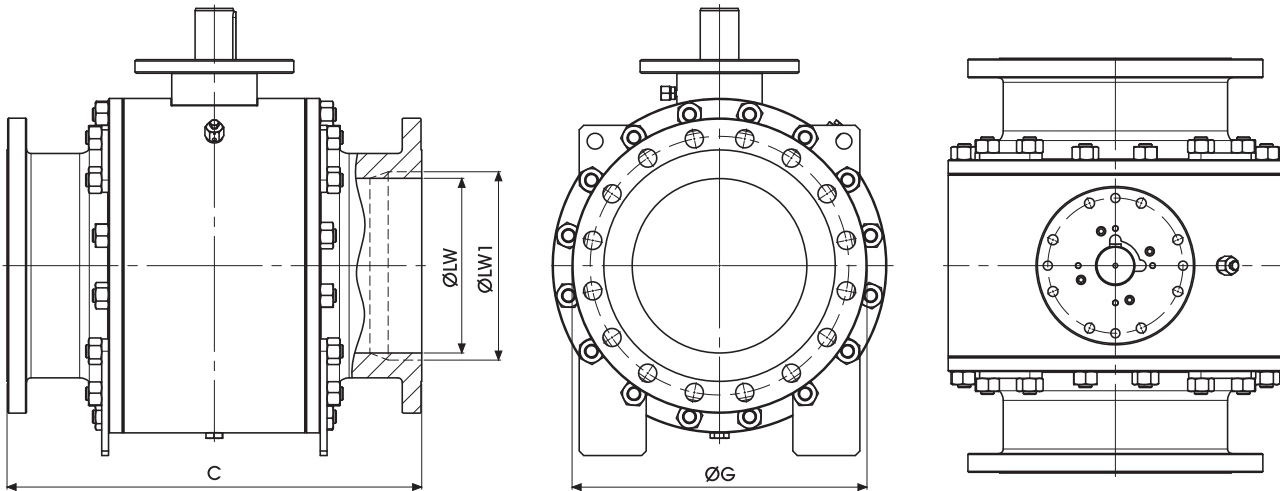
PROVISIONS

API-6D ANSI B16.34 Specification for pipeline valves
 API 598 Valve inspection and test
 ANSI B.16.34 Steel valves Flanged and butt welding ends
 ANSI B16.5 Steel pipe flanges and flanged fittings
 ANSI B16.10 Face to face and end to end dimensions of ferrous valves
 ASTM American society for testing materials
 BS 6755 Testing of valves
 NACE MR-01-75 Sulfide stress cracking resistant metallic materials for oil field equipment
 UNI EN ISO 9001 quality system
 DIN/ISO 5211 for mounting

"The company reserves the right to operate dimensional changes without prior notice".

+ SBT300 2-WAY HIGH PRESSURE BALL VALVES

www.gemels.it



SBT 300 FB

Standard

TYPE	PN	INCH	LW	LW1	C RF	C RTJ	G
SBT A300	5 Mpa	6	150	-	403	419	320
SBT A300	5 Mpa	8	201	-	502	518	380
SBT A300	5 Mpa	10	252	-	568	584	445
SBT A300	5 Mpa	12	303	-	648	664	520
SBT A300	5 Mpa	14	334	-	762	778	584,5
SBT A300	5 Mpa	16	385	-	838	854	648
SBT A300	5 Mpa	18	436	-	914	930	711,5
SBT A300	5 Mpa	20	487	-	991	1010	775
SBT A300	5 Mpa	22	538	-	1092	1114	840*
SBT A300	5 Mpa	24	589	-	1143	1165	914,5
SBT A300	5 Mpa	26	635	-	1245	1270	-
SBT A300	5 Mpa	28	686	-	1346	1372	-
SBT A300	5 Mpa	30	737	-	1397	1422	-
SBT A300	5 Mpa	32	781	-	1524	1553	-
SBT A300	5 Mpa	34	832	-	1626	1654	-
SBT A300	5 Mpa	36	876	-	1727	1756	-

SBT 300 RB

Standard

TYPE	PN	INCH	LW	LW1	C RF	C RTJ	G
SBT A300	5 Mpa	8x6	150	201	502	518	380
SBT A300	5 Mpa	10x8	201	252	568	584	445
SBT A300	5 Mpa	12x10	252	303	648	664	520
SBT A300	5 Mpa	14x10	252	334	762	778	584,5
SBT A300	5 Mpa	16x12	303	385	838	854	648
SBT A300	5 Mpa	18x14	334	436	914	930	711,5
SBT A300	5 Mpa	20x16	385	487	991	1010	775
SBT A300	5 Mpa	24x20	487	589	1143	1165	914,5
SBT A300	5 Mpa	28x24	589	684	1346	1372	1035*
SBT A300	5 Mpa	30x24	591	737	1397	1422	-
SBT A300	5 Mpa	36x30	737	876	1727	1756	-

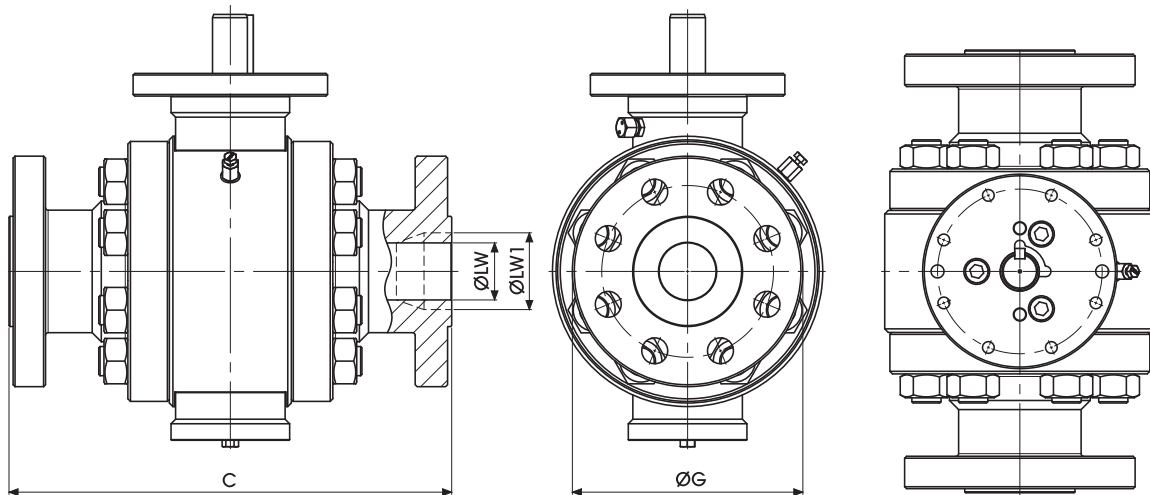
* according to MSS SP44

SBT

+ SBT600 2-WAY HIGH PRESSURE BALL VALVES

**ALSO AVAILABLE
IN FULLY
WELDED VERSION**

Specialist in Ball Valves



SBT 600 FB

Standard

TYPE	PN	INCH	LW	LW1	C RF	C RTJ	G
SBT A600	10 Mpa	2	49	-	292	295	165
SBT A600	10 Mpa	2 1/2	62	-	330	333	190
SBT A600	10 Mpa	3	74	-	356	359	210
SBT A600	10 Mpa	4	100	-	432	435	275

SBT 600 RB

Standard

TYPE	PN	INCH	LW	LW1	C RF	C RTJ	G
SBT A600	10 Mpa	2x1 1/2	38	49	292	295	165
SBT A600	10 Mpa	3x2 1/2	62	74	356	359	210
SBT A600	10 Mpa	3x2	49	74	356	359	210
SBT A600	10 Mpa	6x4	100	150	559	562	355

SPLIT BODY ANSI600 PN100 FULL AND REDUCED BORE

COMPONENTS	MATERIAL	MIN/MAX TEMP. (°C)
BODY AND FLANGE	ASTM A105	-20°+120°
	ASTM A105N	-29°+120°
	ASTM A182 F316	-60°+230°
	ASTM A350 LF2	-40°+100°
STEM	ASTM A479 Tp316	-60°+230°
BALL	ASTM A182 F316	-60°+230°
STEM SEALS	PTFE	-196°+230°
	GRAPHITE	-
BALL SEATS	RPTFE	-196°+230°
	PEEK	-50°+250°
	NYLON	-40°+90°
	DEVLON	-40°+150°
	METAL-TO-METAL	-60°+230°
O-RING	NBR	-30°+100°
	FKM	-40°+200°
	EPDM	-50°+150°
	MVQ	-50°+150°
STUD/NUT	ASTM A193 B7/Gr. 2H	
	ASTM A193 B8/Gr. 8	
	ASTM A320 L7/Gr. 7	

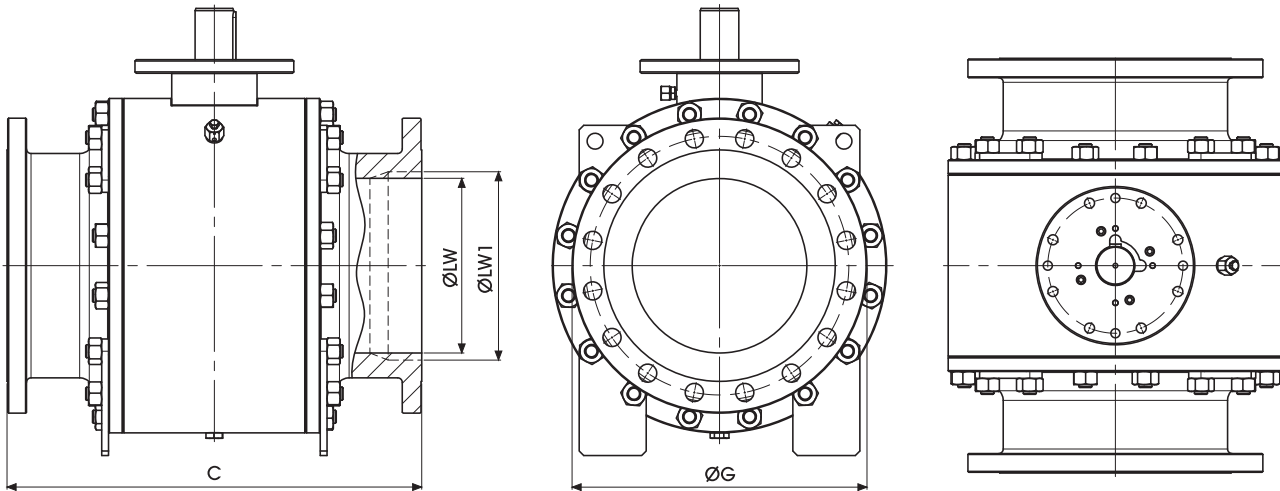
PROVISIONS

API-6D ANSI B16.34 Specification for pipeline valves
 API 598 Valve inspection and test
 ANSI B.16.34 Steel valves Flanged and butt welding ends
 ANSI B16.5 Steel pipe flanges and flanged fittings
 ANSI B16.10 Face to face and end to end dimensions of ferrous valves
 ASTM American society for testing materials
 BS 6755 Testing of valves
 NACE MR-01-75 Sulfide stress cracking resistant metallic materials for oil field equipment
 UNI EN ISO 9001 quality system
 DIN/ISO 5211 for mounting

"The company reserves the right to operate dimensional changes without prior notice".

+ SBT600 2-WAY HIGH PRESSURE BALL VALVES

www.gemels.it



SBT 600 FB

Standard

TYPE	PN	INCH	LW	LW1	C RF	C RTJ	G
SBT A600	10 Mpa	6	150	-	559	562	355
SBT A600	10 Mpa	8	201	-	660	664	420
SBT A600	10 Mpa	10	252	-	787	791	510
SBT A600	10 Mpa	12	303	-	838	841	560
SBT A600	10 Mpa	14	334	-	889	892	603,5
SBT A600	10 Mpa	16	385	-	991	994	686
SBT A600	10 Mpa	18	436	-	1092	1095	743
SBT A600	10 Mpa	20	487	-	1194	1200	813
SBT A600	10 Mpa	22	538	-	1295	1305	870*
SBT A600	10 Mpa	24	589	-	1397	1407	940
SBT A600	10 Mpa	26	635	-	1448	1461	-
SBT A600	10 Mpa	28	686	-	1549	1562	-
SBT A600	10 Mpa	30	737	-	1651	1664	-
SBT A600	10 Mpa	32	781	-	1778	1794	-
SBT A600	10 Mpa	34	832	-	1930	1946	-
SBT A600	10 Mpa	36	876	-	2083	2099	-

SBT 600 RB

Standard

TYPE	PN	INCH	LW	LW1	C RF	C RTJ	G
SBT A600	10 Mpa	8x6	150	201	660	664	420
SBT A600	10 Mpa	10x8	201	252	787	791	510
SBT A600	10 Mpa	12x10	252	303	838	841	560
SBT A600	10 Mpa	14x10	252	334	889	892	603,5
SBT A600	10 Mpa	16x12	303	385	991	994	686
SBT A600	10 Mpa	18x14	334	436	1092	1095	743
SBT A600	10 Mpa	20x16	385	487	1194	1200	813
SBT A600	10 Mpa	24x20	487	589	1397	1407	940
SBT A600	10 Mpa	28x24	589	684	1549	1562	1075*
SBT A600	10 Mpa	30x24	591	737	1651	1664	-
SBT A600	10 Mpa	36x30	737	876	2083	2099	-

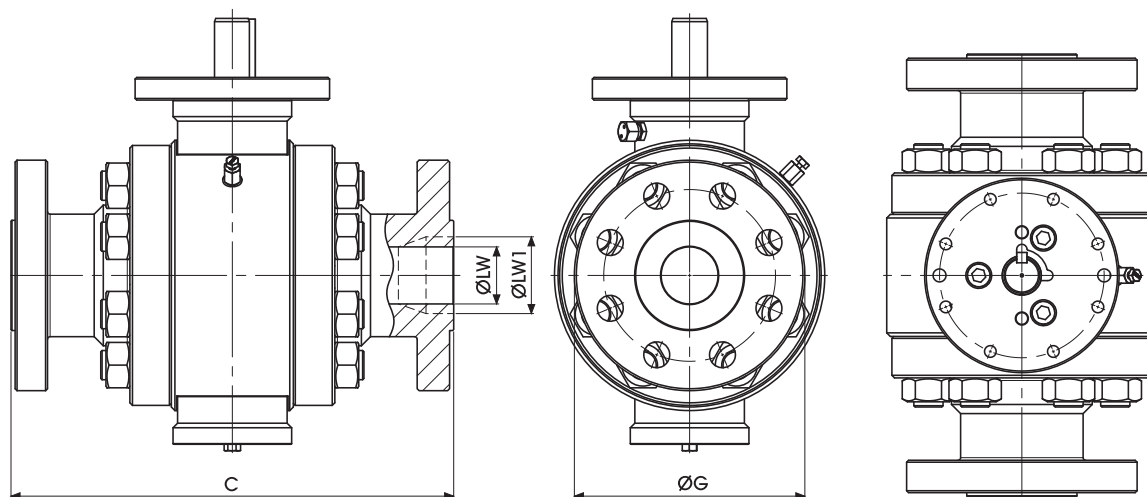
* according to MSS SP44

SBT

+ SBT900 2-WAY HIGH PRESSURE BALL VALVES

**ALSO AVAILABLE
IN FULLY
WELDED VERSION**

Specialist in Ball Valves



SBT 900 FB

Standard

TYPE	PN	INCH	LW	LW1	C RF	C RTJ	G
SBT A900	15 Mpa	2	49	-	368	371	215
SBT A900	15 Mpa	2 1/2	62	-	419	422	245
SBT A900	15 Mpa	3	74	-	381	384	240
SBT A900	15 Mpa	4	100	-	457	460	290

SBT 900 RB

Standard

TYPE	PN	INCH	LW	LW1	C RF	C RTJ	G
SBT A900	15 Mpa	2x1 1/2	38	49	368	371	215
SBT A900	15 Mpa	3x2 1/2	62	74	381	384	240
SBT A900	15 Mpa	3x2	49	74	381	384	240
SBT A900	15 Mpa	6x4	100	150	610	613	380

SPLIT BODY ANSI900 PN150 FULL AND REDUCED BORE

COMPONENTS	MATERIAL	MIN/MAX TEMP. (°C)
BODY AND FLANGE	ASTM A105	-20°+120°
	ASTM A105N	-29°+120°
	ASTM A182 F316	-60°+230°
	ASTM A350 LF2	-40°+100°
STEM	ASTM A479 Tp316	-60°+230°
BALL	ASTM A182 F316	-60°+230°
STEM SEALS	PTFE	-196°+230°
	GRAPHITE	-
BALL SEATS	RPTFE	-196°+230°
	PEEK	-50°+250°
	NYLON	-40°+90°
	DEVLON	-40°+150°
	METAL-TO-METAL	-60°+230°
O-RING	NBR	-30°+100°
	FKM	-40°+200°
	EPDM	-50°+150°
	MVQ	-50°+150°
STUD/NUT	ASTM A193 B7/Gr. 2H	
	ASTM A193 B8/Gr. 8	
	ASTM A320 L7/Gr. 7	

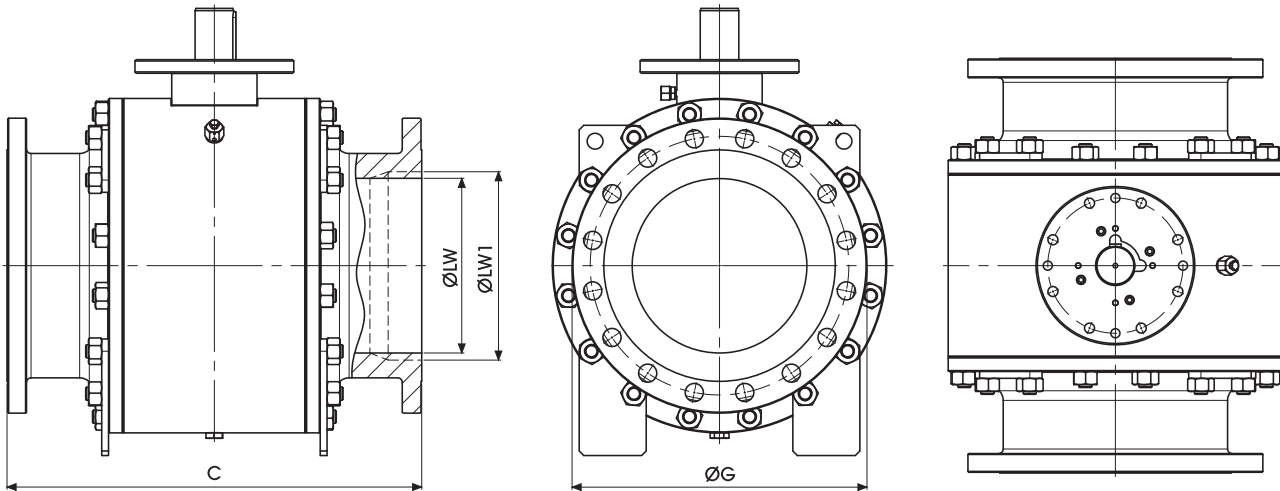
PROVISIONS

API-6D ANSI B16.34 Specification for pipeline valves
 API 598 Valve inspection and test
 ANSI B.16.34 Steel valves Flanged and butt welding ends
 ANSI B16.5 Steel pipe flanges and flanged fittings
 ANSI B16.10 Face to face and end to end dimensions of ferrous valves
 ASTM American society for testing materials
 BS 6755 Testing of valves
 NACE MR-01-75 Sulfide stress cracking resistant metallic materials for oil field equipment
 UNI EN ISO 9001 quality system
 DIN/ISO 5211 for mounting

"The company reserves the right to operate dimensional changes without prior notice".

+ SBT900 2-WAY HIGH PRESSURE BALL VALVES

www.gemels.it



SBT 900 FB

Standard

TYPE	PN	INCH	LW	LW1	C RF	C RTJ	G
SBT A900	15 Mpa	6	150	-	610	613	380
SBT A900	15 Mpa	8	201	-	737	740	470
SBT A900	15 Mpa	10	252	-	838	841	545
SBT A900	15 Mpa	12	303	-	965	968	610
SBT A900	15 Mpa	14	322	-	1029	1038	641,5
SBT A900	15 Mpa	16	373	-	1130	1140	705
SBT A900	15 Mpa	18	423	-	1219	1232	787,5
SBT A900	15 Mpa	20	471	-	1321	1334	857,5
SBT A900	15 Mpa	22	522	-	-	-	-
SBT A900	15 Mpa	24	570	-	1549	1568	1041,5
SBT A900	15 Mpa	26	619	-	1651	1673	-
SBT A900	15 Mpa	28	667	-	1753	1775	-
SBT A900	15 Mpa	30	714	-	1880	1902	-
SBT A900	15 Mpa	32	762	-	2032	2054	-
SBT A900	15 Mpa	34	810	-	2159	2188	-
SBT A900	15 Mpa	36	857	-	2286	2315	-

SBT 900 RB

Standard

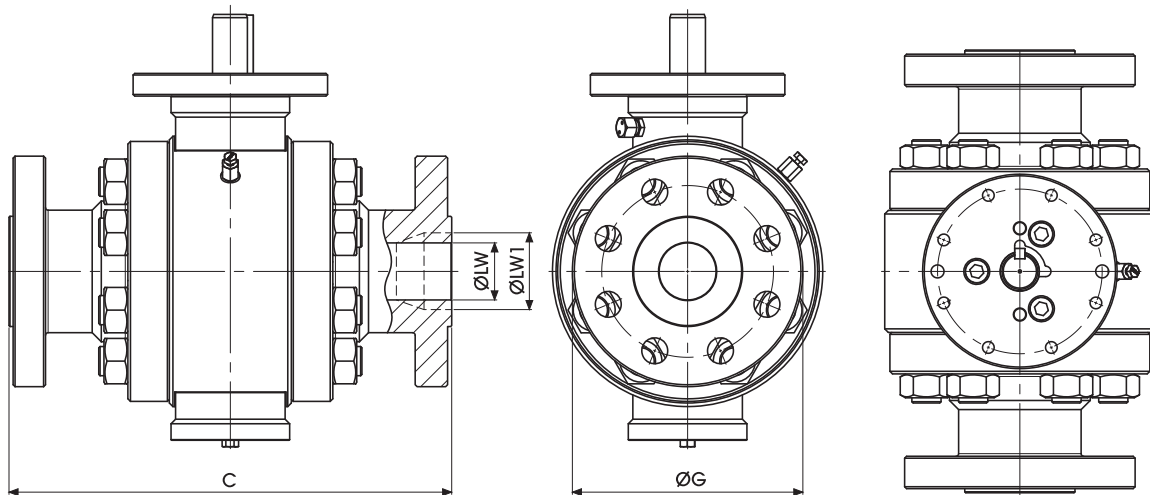
TYPE	PN	INCH	LW	LW1	C RF	C RTJ	G
SBT A900	15 Mpa	8x6	150	201	737	740	470
SBT A900	15 Mpa	10x8	201	252	838	841	545
SBT A900	15 Mpa	12x10	252	303	965	968	610
SBT A900	15 Mpa	14x10	252	322	1029	1038	641,5
SBT A900	15 Mpa	16x12	303	373	1130	1140	705
SBT A900	15 Mpa	18x14	322	423	1219	1232	787,5
SBT A900	15 Mpa	20x16	373	471	1321	1334	857,5
SBT A900	15 Mpa	24x20	471	570	1549	1568	1041,5
SBT A900	15 Mpa	28x24	570	665	-	-	-
SBT A900	15 Mpa	30x24	572	714	1880	1902	-
SBT A900	15 Mpa	36x30	714	857	2286	2315	-

SBT

+ SBT1500 2-WAY HIGH PRESSURE BALL VALVES

ALSO AVAILABLE
IN FULLY
WELDED VERSION

Specialist in Ball Valves



SBT 1500 FB

Standard

TYPE	PN	INCH	LW	LW1	C RF	C RTJ	G
SBT A1500	25 Mpa	2	49	-	368	371	215
SBT A1500	25 Mpa	2 1/2	62	-	419	422	245
SBT A1500	25 Mpa	3	74	-	470	473	265
SBT A1500	25 Mpa	4	100	-	546	549	310

SBT 1500 RB

Standard

TYPE	PN	INCH	LW	LW1	C RF	C RTJ	G
SBT A1500	25 Mpa	2x1 1/2	38	49	368	371	215
SBT A1500	25 Mpa	3x2 1/2	62	74	470	473	265
SBT A1500	25 Mpa	3x2	49	74	470	473	265
SBT A1500	25 Mpa	6x4	100	144	705	711	395

SPLIT BODY ANSI1500 PN250 FULL AND REDUCED BORE

COMPONENTS	MATERIAL	MIN/MAX TEMP. (°C)
BODY AND FLANGE	ASTM A105	-20°+120°
	ASTM A105N	-29°+120°
	ASTM A182 F316	-60°+230°
	ASTM A350 LF2	-40°+100°
STEM	ASTM A479 Tp316	-60°+230°
BALL	ASTM A182 F316	-60°+230°
STEM SEALS	PTFE	-196°+230°
	GRAPHITE	-
BALL SEATS	RPTFE	-196°+230°
	PEEK	-50°+250°
	NYLON	-40°+90°
	DEVLON	-40°+150°
	METAL-TO-METAL	-60°+230°
O-RING	NBR	-30°+100°
	FKM	-40°+200°
	EPDM	-50°+150°
	MVQ	-50°+150°
STUD/NUT	ASTM A193 B7/Gr. 2H	
	ASTM A193 B8/Gr. 8	
	ASTM A320 L7/Gr. 7	

PROVISIONS

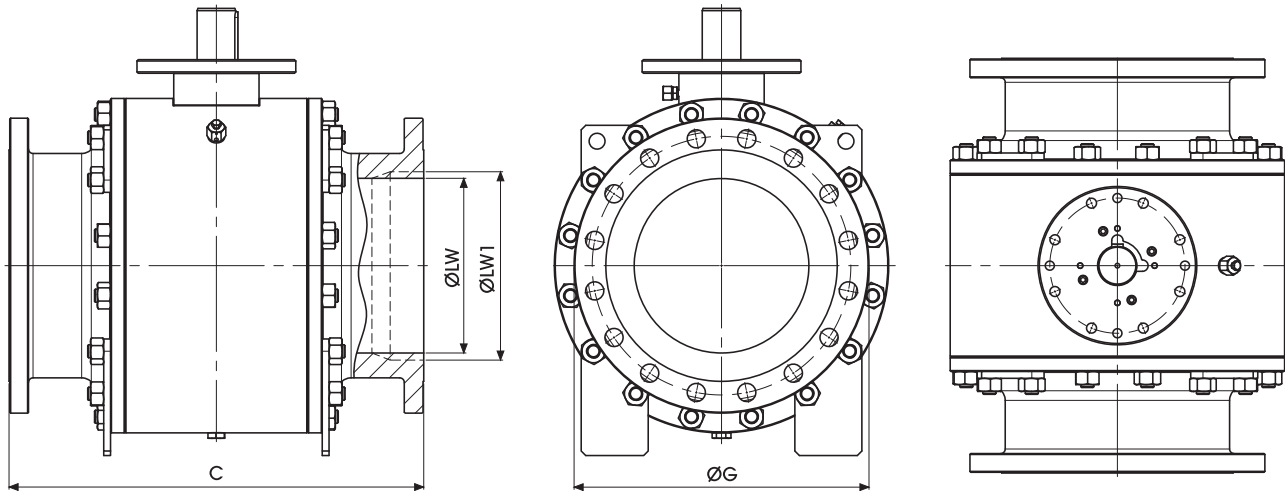
API-6D ANSI B16.34 Specification for pipeline valves
API 598 Valve inspection and test
ANSI B.16.34 Steel valves Flanged and butt welding ends
ANSI B16.5 Steel pipe flanges and flanged fittings
ANSI B16.10 Face to face and end to end dimensions of ferrous valves
ASTM American society for testing materials
BS 6755 Testing of valves
NACE MR-01-75 Sulfide stress cracking resistant metallic materials for oil field equipment
UNI EN ISO 9001 quality system
DIN/ISO 5211 for mounting

"The company reserves the right to operate dimensional changes without prior notice".

+ SBT1500

2-WAY HIGH PRESSURE BALL VALVES

www.gemels.it



SBT 1500 FB

Standard

TYPE	PN	INCH	LW	LW1	C RF	C RTJ	G
SBT A1500	25 Mpa	6	144	-	705	711	395
SBT A1500	25 Mpa	8	192	-	832	841	485
SBT A1500	25 Mpa	10	239	-	991	1000	585
SBT A1500	25 Mpa	12	287	-	1130	1146	675
SBT A1500	25 Mpa	14	315	-	1257	1276	749,5
SBT A1500	25 Mpa	16	360	-	1384	1407	825,5
SBT A1500	25 Mpa	18	406	-	1537	1559	914,5
SBT A1500	25 Mpa	20	454	-	1664	1686	984,5
SBT A1500	25 Mpa	22	500	-	-	-	-
SBT A1500	25 Mpa	24	546	-	-	1972	1168,5

SBT 1500 RB

Standard

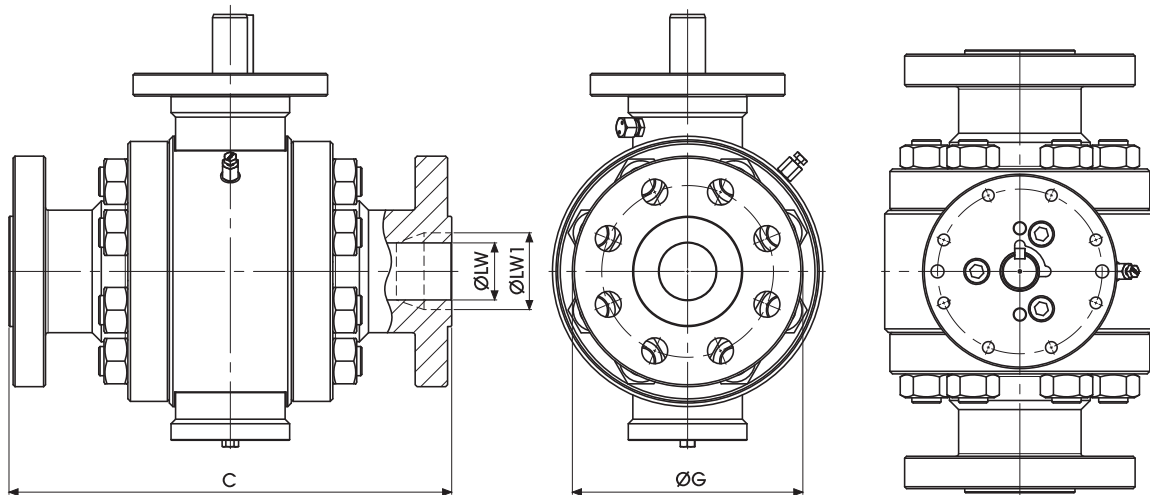
TYPE	PN	INCH	LW	LW1	C RF	C RTJ	G
SBT A1500	25 Mpa	8x6	144	192	832	841	485
SBT A1500	25 Mpa	10x8	192	239	991	1000	585
SBT A1500	25 Mpa	12x10	239	287	1130	1146	675
SBT A1500	25 Mpa	14x10	239	315	1257	1276	749,5
SBT A1500	25 Mpa	16x12	287	360	1384	1407	825,5
SBT A1500	25 Mpa	18x14	315	406	1537	1559	914,5
SBT A1500	25 Mpa	20x16	360	454	1664	1686	984,5
SBT A1500	25 Mpa	24x20	454	546	-	1972	1168,5
SBT A1500	25 Mpa	28x24	546	641	-	-	-
SBT A1500	25 Mpa	30x24	546	686	-	-	-

SBT

+ SBT2500 2-WAY HIGH PRESSURE BALL VALVES

**ALSO AVAILABLE
IN FULLY
WELDED VERSION**

Specialist in Ball Valves



SBT 2500 FB

Standard

TYPE	PN	INCH	LW	LW1	C RF	C RTJ	G
SBT A2500	42 Mpa	2	42	-	451	454	235
SBT A2500	42 Mpa	2 1/2	52	-	508	514	265
SBT A2500	42 Mpa	3	62	-	578	584	305
SBT A2500	42 Mpa	4	87	-	673	683	355

SBT 2500 RB

Standard

TYPE	PN	INCH	LW	LW1	C RF	C RTJ	G
SBT A2500	42 Mpa	2x1 1/2	38	42	451	454	235
SBT A2500	42 Mpa	3x2 1/2	52	62	578	584	305
SBT A2500	42 Mpa	3x2	42	62	578	584	305
SBT A2500	42 Mpa	6x4	87	131	914	927	485

SPLIT BODY ANSI2500 PN420 FULL AND REDUCED BORE

COMPONENTS	MATERIAL	MIN/MAX TEMP. (°C)
BODY AND FLANGE	ASTM A105	-20°+120°
	ASTM A105N	-29°+120°
	ASTM A182 F316	-60°+230°
	ASTM A350 LF2	-40°+100°
STEM	ASTM A479 Tp316	-60°+230°
BALL	ASTM A182 F316	-60°+230°
STEM SEALS	PTFE	-196°+230°
	GRAPHITE	-
BALL SEATS	RPTFE	-196°+230°
	PEEK	-50°+250°
	NYLON	-40°+90°
	DEVLON	-40°+150°
	METAL-TO-METAL	-60°+230°
O-RING	NBR	-30°+100°
	FKM	-40°+200°
	EPDM	-50°+150°
	MVQ	-50°+150°
STUD/NUT	ASTM A193 B7/Gr. 2H	
	ASTM A193 B8/Gr. 8	
	ASTM A320 L7/Gr. 7	

PROVISIONS

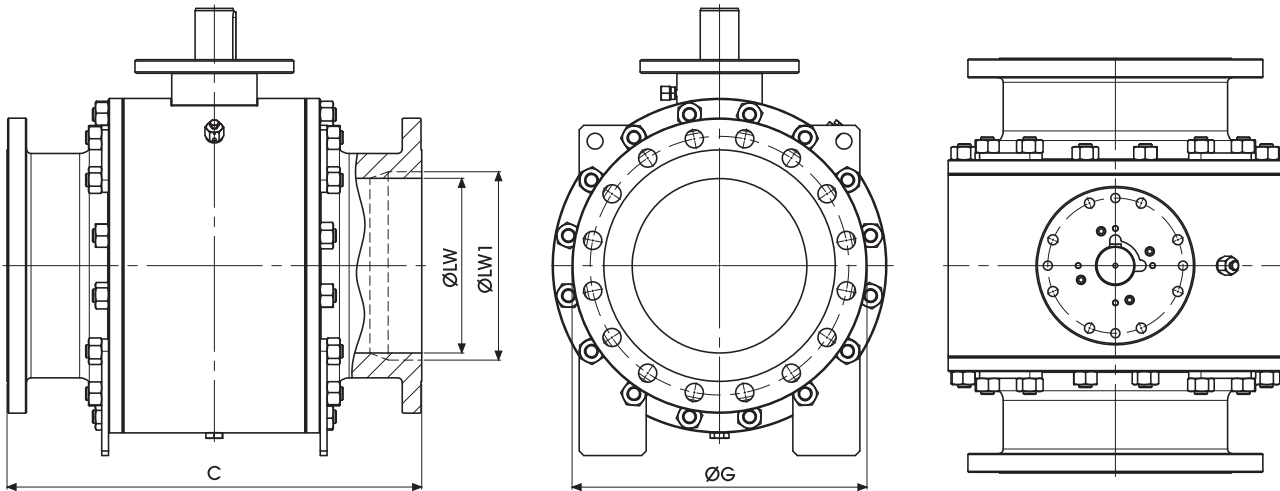
API-6D ANSI B16.34 Specification for pipeline valves
 API 598 Valve inspection and test
 ANSI B.16.34 Steel valves Flanged and butt welding ends
 ANSI B16.5 Steel pipe flanges and flanged fittings
 ANSI B16.10 Face to face and end to end dimensions of ferrous valves
 ASTM American society for testing materials
 BS 6755 Testing of valves
 NACE MR-01-75 Sulfide stress cracking resistant metallic materials for oil field equipment
 UNI EN ISO 9001 quality system
 DIN/ISO 5211 for mounting

"The company reserves the right to operate dimensional changes without prior notice".

+ SBT2500

2-WAY HIGH PRESSURE BALL VALVES

www.gemels.it



SBT 2500 FB

Standard

TYPE	PN	INCH	LW	LW1	C RF	C RTJ	G
SBT A2500	42 Mpa	6	131	-	914	927	485
SBT A2500	42 Mpa	8	179	-	1022	1038	550
SBT A2500	42 Mpa	10	223	-	1270	1294	675
SBT A2500	42 Mpa	12	265	-	1422	1445	760
SBT A2500	42 Mpa	14	292	-	-	-	-
SBT A2500	42 Mpa	16	333	-	-	-	-
SBT A2500	42 Mpa	18	374	-	-	-	-
SBT A2500	42 Mpa	20	419	-	-	-	-

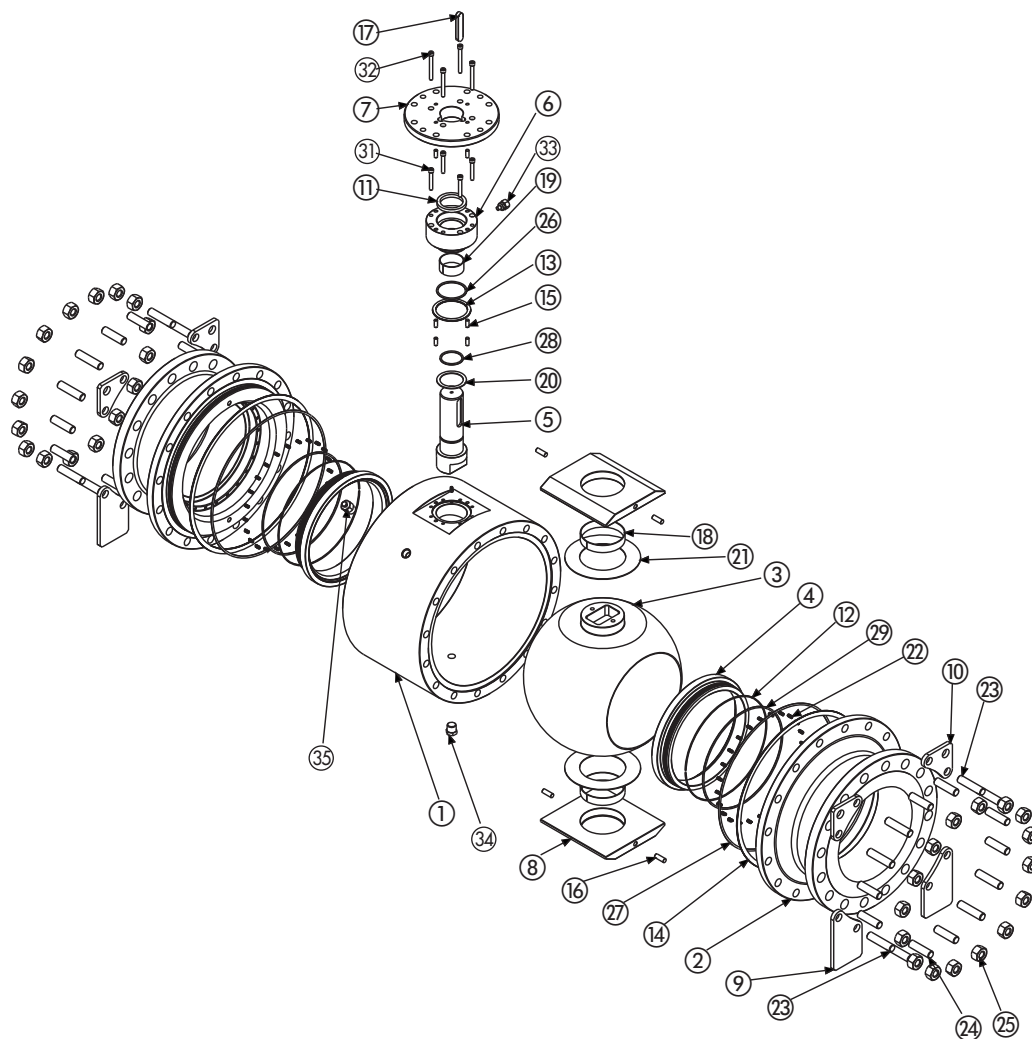
SBT 2500 FB

Standard

TYPE	PN	INCH	LW	LW1	C RF	C RTJ	G
SBT A2500	42 Mpa	8x6	131	179	1022	1038	550
SBT A2500	42 Mpa	10x8	179	223	1270	1292	675
SBT A2500	42 Mpa	12x10	223	265	1422	1445	760
SBT A2500	42 Mpa	14x10	223	292	-	-	-
SBT A2500	42 Mpa	16x12	265	333	-	-	-
SBT A2500	42 Mpa	18x14	292	374	-	-	-
SBT A2500	42 Mpa	20x16	333	419	-	-	-
SBT A150	42 Mpa	18x14	334	436	864	876	635
SBT A150	42 Mpa	20x16	385	487	914	927	698,5
SBT A150	42 Mpa	24x20	487	589	1067	1080	813
SBT A150	42 Mpa	28x24	589	684	1245	-	925*
SBT A150	42 Mpa	30x24	589	735	1295	-	985*

* according to MSS SP44

SBT



Carbon steel

Pos	Description	Material
1	Body	ASTM A105N
2	Clousure	ASTM A105N
3	Ball	ASTM A182 F316
4	Seat	ASTM A479 Tp.316/RPTFE
5	Stem	ASTM A479 Tp.316
6	Bonnet	ASTM A105N
7	Cover Plate	ASTM A105N
8	Spacer	ASTM A516 Gr.60
9	Valve Support	Fe 360
10	Lifting Lug	Fe 360
11	Stem Gasket	GRAPHITE
12	Seat Gasket	GRAPHITE
13	Body/Bonnet Gasket S.W.T.	GRAPHITE+316L
14	Body/Flange Gasket S.W.T.	GRAPHITE+316L
15	Body/Bonnet/Cover Pin	100Cr6
16	Spacer Pin	100Cr6
17	Stem Key	C45
18	Ball Bushing	AISI 316 + N.F.C.

Pos	Description	Material
19	Stem Bushing	AISI 316 + N.F.C.
20	Stem Thrust Washer	AISI 316 + N.F.C.
21	Ball Thrust Washer	AISI 316 + N.F.C.
22	Spring Inconel	X750
23	Stud ASTM	A193 B7
24	Support/Lifting Lug Stud	ASTM A193 B7
25	Nut	ASTM A194 2H
26	Body/Bonnet o-ring	NBR
27	Body/Flange o-ring	NBR
28	Stem o-ring	NBR
29	Seat o-ring	NBR
30	Antistatic Device	ASTM A479 Tp.316
31	Bonnet T.C.E.I.	ASTM A193 B7
32	Cover Plate T.C.E.I.	ASTM A193 B7
33	Stem Injector	ASTM A479 Tp.316
34	Drain Plug	ASTM A479 Tp.316
35	Vent Bleeder	ASTM A479 Tp.316

On request

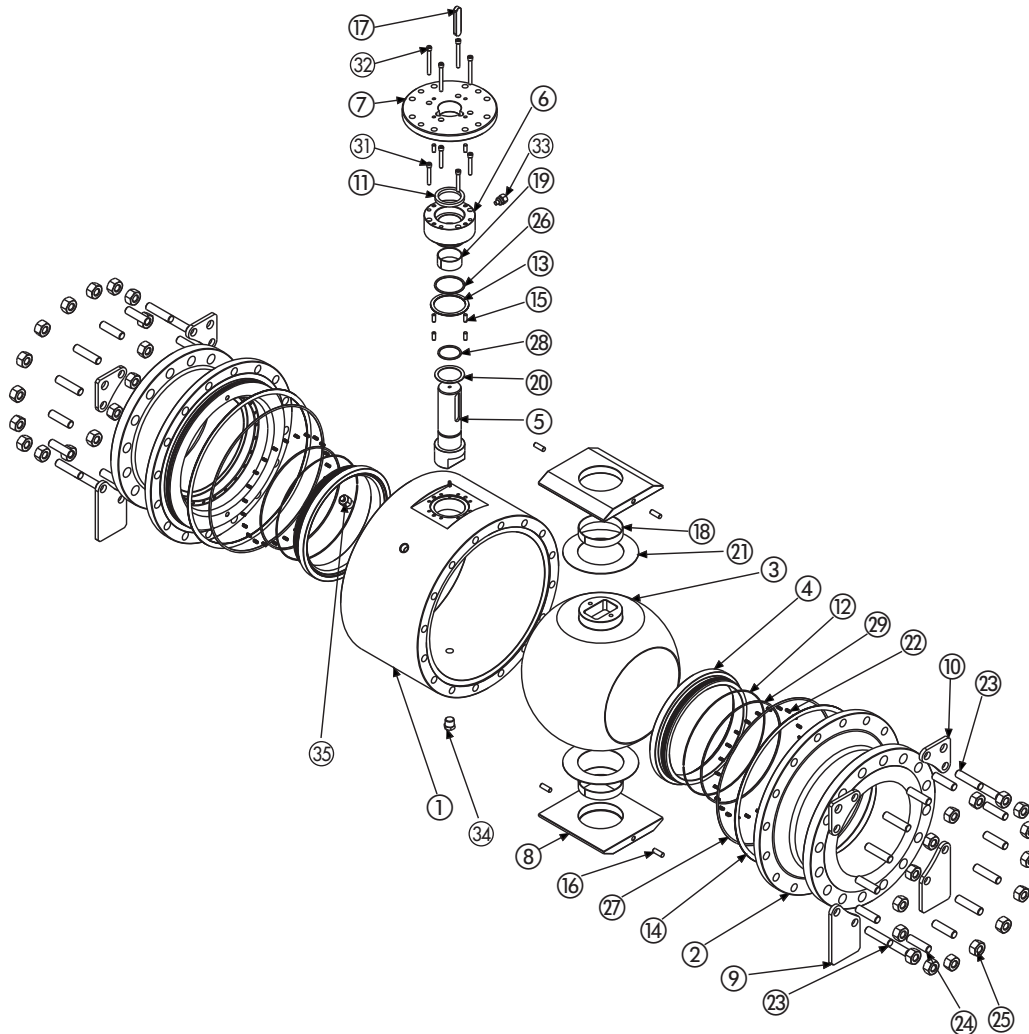
- Reduced bore
- O-Ring in FKM, EPDM, HNBR, KALREZ
- Seals in PTFE, PEEK, PA612, GEMPTFE, METAL TO METAL
- Pressure class ANSI 150-300-600 900-1500-2500
- Lever
- Gear
- Pneumatic and electrical actuator
- Locking device

For further special requests please consult our technical/commercial service

+ SBT 2-WAY HIGH PRESSURE BALL VALVES

www.gemels.it

2017 - Edition 3



Stainless steel

Pos	Description	Material	Pos	Description	Material
1	Body	ASTM A182 F316	19	Stem Bushing	AISI 316 + N.F.C.
2	Closure	ASTM A182 F316	20	Stem Thrust Washer	AISI 316 + N.F.C.
3	Ball	ASTM A182 F316	21	Ball Thrust Washer	AISI 316 + N.F.C.
4	Seat	ASTM A182 F316 /RPTFE	22	Spring Inconel	X750
5	Stem	ASTM A479 Tp.316	23	Stud	ASTM A193 B8 Cl.8
6	Bonnet	ASTM A479 Tp.316	24	Support/Lifting Lug Stud	ASTM A193 B8 Cl.8
7	Cover Plate	ASTM A479 Tp.316	25	Nut	ASTM A194 Gr.8
8	Spacer	ASTM A240 Tp.316	26	Body/Bonnet o-ring	NBR
9	Valve Support	Fe 360	27	Body/Flange o-ring	NBR
10	Lifting Lug	Fe 360	28	Stem o-ring	NBR
11	Stem Gasket	GRAPHITE	29	Seat o-ring	NBR
12	Seat Gasket	GRAPHITE	30	Antistatic Device	ASTM A479 Tp.316
13	Body/Bonnet Gasket S.W.T.	GRAPHITE+316L	31	Bonnet T.C.E.I.	ASTM A193 B8 Cl.8
14	Body/Flange Gasket S.W.T.	GRAPHITE+316L	32	Cover Plate T.C.E.I.	ASTM A193 B8 Cl.8
15	Body/Bonnet/Cover Pin	100Cr6	33	Stem Injector	ASTM A479 Tp.316
16	Spacer Pin	100Cr6	34	Drain Plug	ASTM A479 Tp.316
17	Stem Key	C70	35	Vent Bleeder	ASTM A479 Tp.316
18	Ball Bushing	AISI 316 + N.F.C.			

On request

- Reduced bore
- O-Ring in FKM, EPDM, HNBR, KALREZ
- Seals in PTFE, PEEK, PA612, GEMPTFE, METAL TO METAL
- Pressure class ANSI 150-300-600 900-1500-2500
- Lever
- Gear
- Pneumatic and electrical actuator
- Locking device

For further special requests please consult our technical/commercial service

