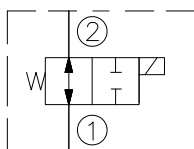
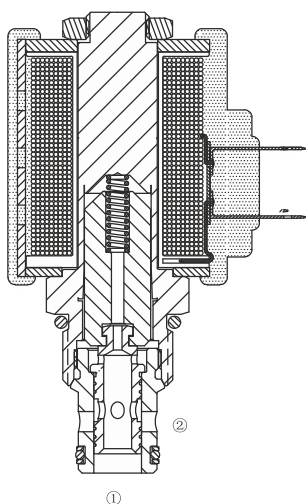


HSV10-25

**TWO-WAY, TWO-POSITION, SPOOL-TYPE
CARTRIDGE SOLENOID VALVE****SYMBOL****Operation**

When de-energized, the valve allows flow in both directions.
When energized, the cartridge's spool shifts to block flow in either direction.

Operation of Manual Override Option:

To override, push button in, twist counterclockwise 180° and release.

In this position, valve will remain detented in the shifted condition.

To return to normal operation, push button in, twist clockwise 180° and release.

Override will be detented in this position.

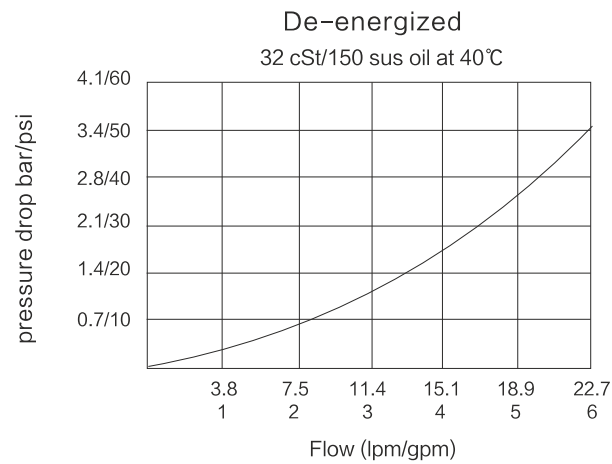
Features

- Continuous-duty solenoid.
- Efficient wet-armature construction.
- Hardened seat for long life.
- Industry common cavity.
- Compact size.

Technical data

Model	HSV10-25
Max. Operating Pressure	207Bar
Flow rate (L/min)	See Pressure Drop VS. Flow graph
Internal Leakage	82cc/min Our ideal leakage < 82ml/min
Fluid temperature range	-30°C to +120°C
Coil Rating	90% to 110% Of Rated Voltage
Filtration	Critical Application - ISO 18/16/13 Non-Critical Application - ISO 19/17/14
Fluids	Mineral-based fluids For other fluid compatibility, consult factory
Cavity	10-2
Body Material	Anodized 6061-T6 aluminum alloy rated at 207 bar Steel rated at 350 bar

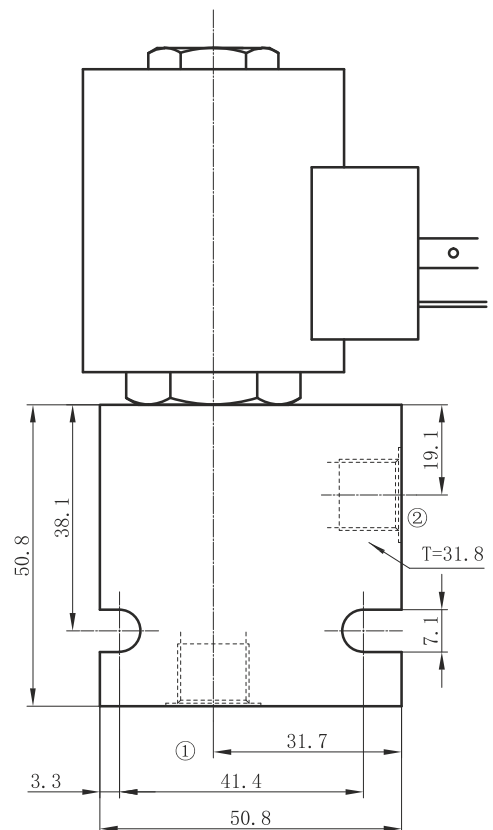
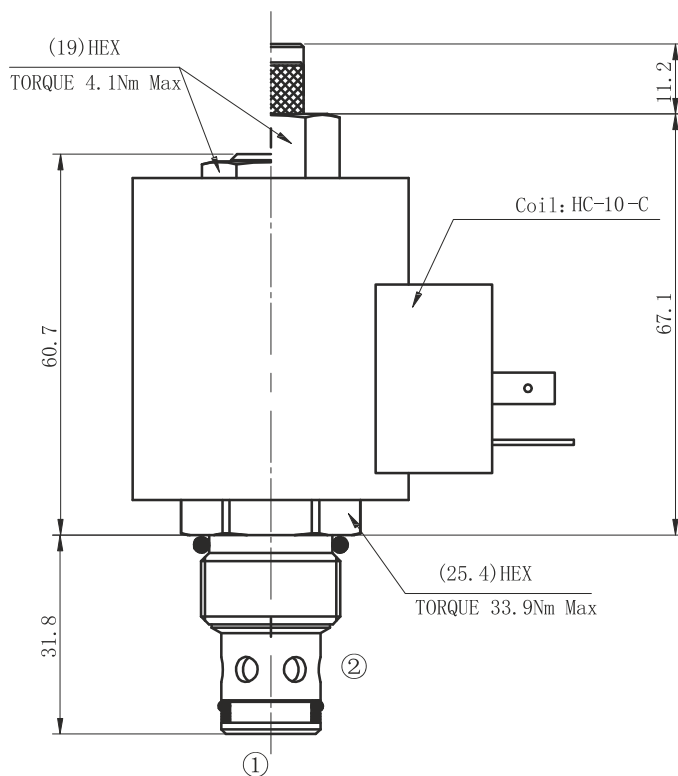
Characteris curves



Installation Dimensions

Coil Must Be Installed With Lettering Up

Unit=Millimeters



► Ordering Details

