

HPVB/E SERIES

ONE AND TWO LEVER OPERATED PILOT CONTROL VALVES



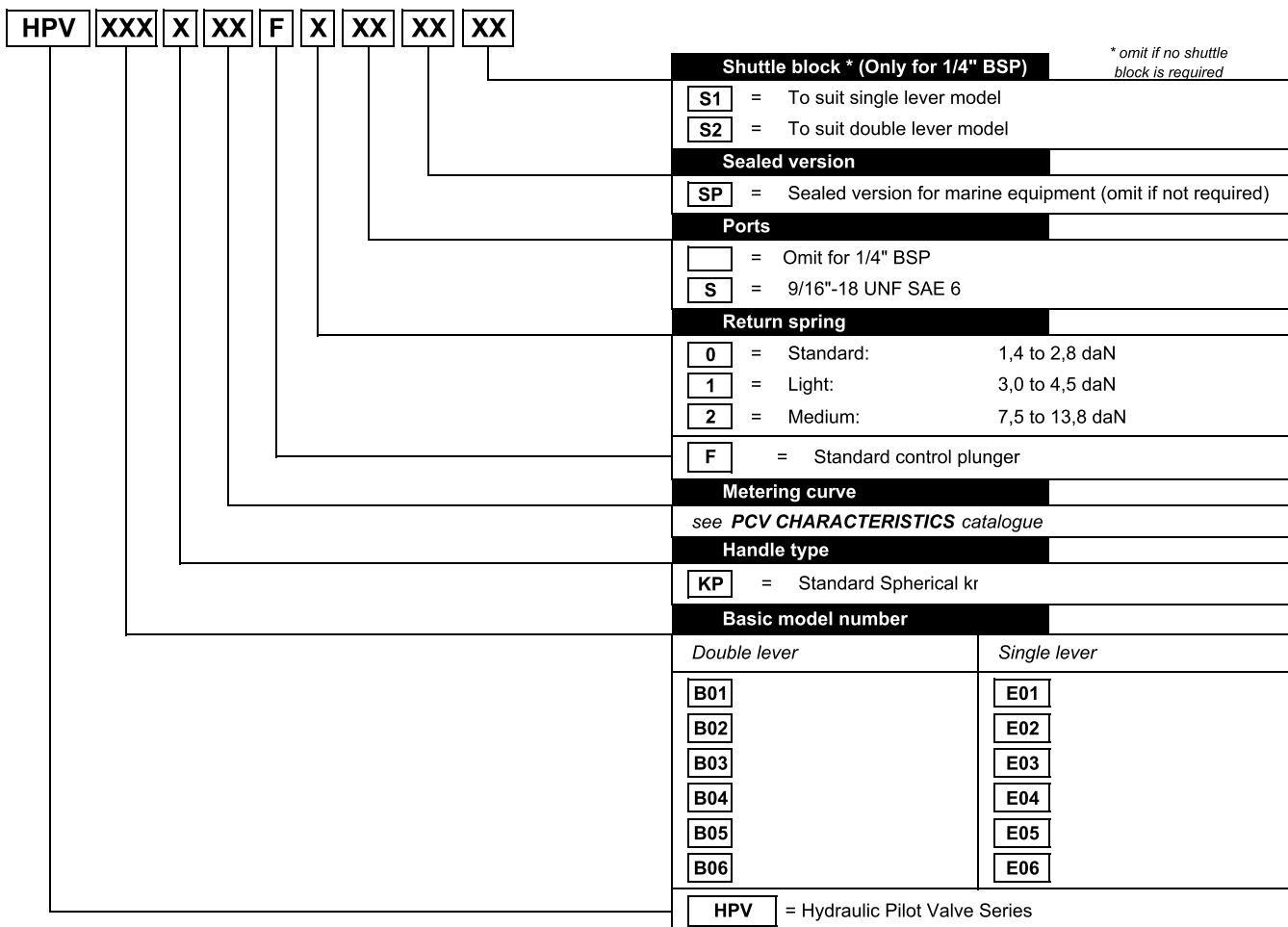
HYDRAULIC PILOT CONTROL HPVB/E

HPV Pilot Control Valves are part of the comprehensive range of our product, and with the inclusion of electrical detents are designed specifically for wheeled loader applications. This product, with its individual lever control, supported by an extensive range of control curve characteristics makes it suitable for a wide range of applications. Our engineers can offer specialist support to optimise this product to suit your application. The product is supported by a comprehensive sales and service facility around the world.

BENEFITS

- Compact and light weight
- All ports on bottom face for ease of installation
- Simple to mount
- Compatible with a wide range of product
- Operator is insulated from high temperature components
- Proven, simple pressure reducing elements
- Wide range of low hysteresis, high accuracy, pressure control curves
- Low effort lever control with spring centred and detented version available

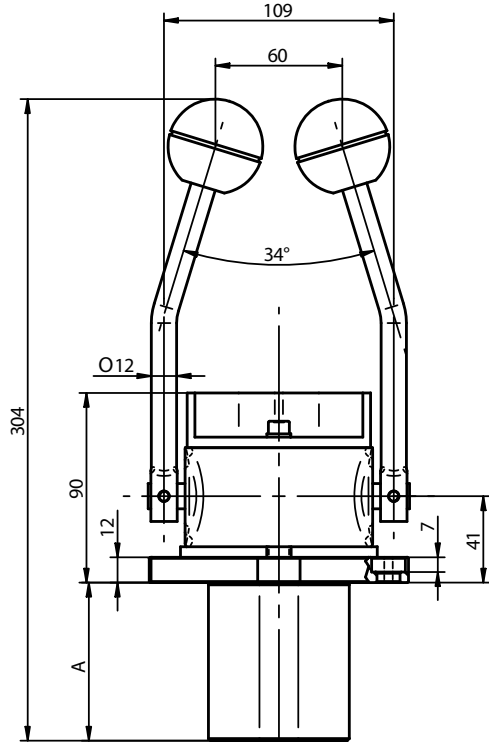
ORDER CODE



HYDRAULIC PILOT CONTROL HPVB/E Installation Drawing

B01 PILOT OPERATED CONTROL

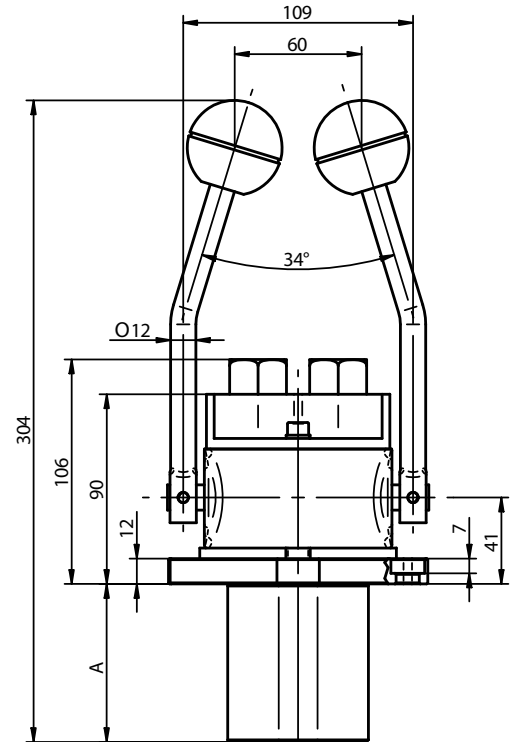
2 side levers with return spring



A=75 mm FOR 1/4" BSP PORTS
A=82 mm FOR 9/16"-18 UNF SAE6 PORTS

B02 PILOT OPERATED CONTROL

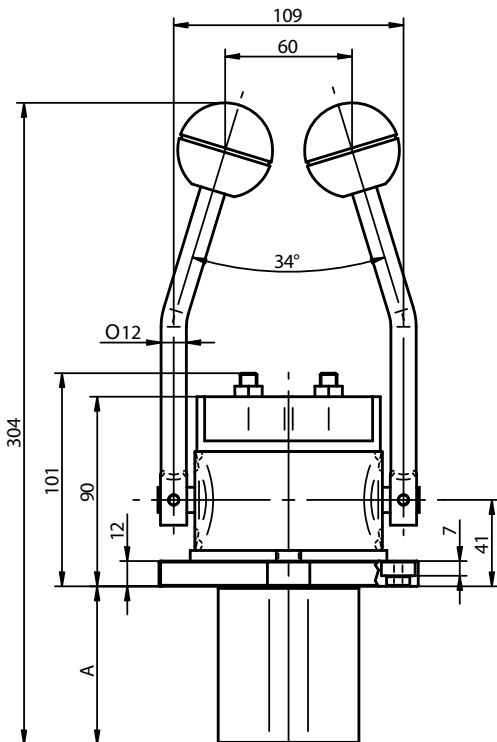
2 side levers with mechanical detent



A=75 mm FOR 1/4" BSP PORTS
A=82 mm FOR 9/16"-18 UNF SAE6 PORTS

B03 PILOT OPERATED CONTROL

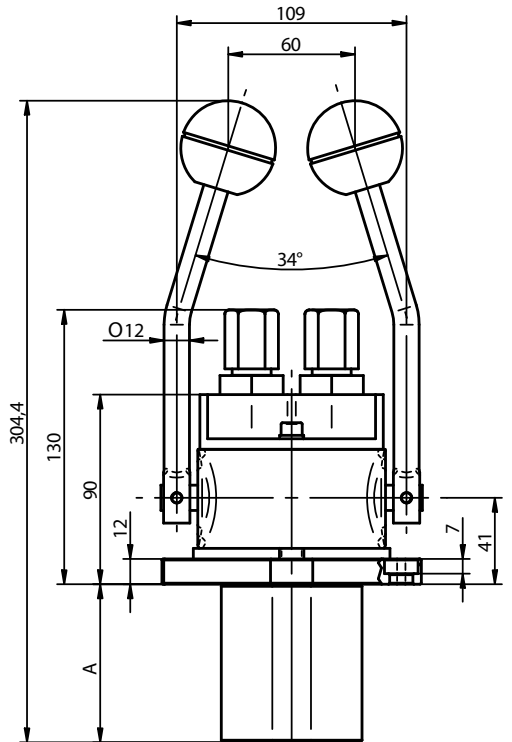
2 side levers with detent in any position



A=75 mm FOR 1/4" BSP PORTS
A=82 mm FOR 9/16"-18 UNF SAE6 PORTS

B04 PILOT OPERATED CONTROL

2 side levers with detent in any position + neutral position sensor

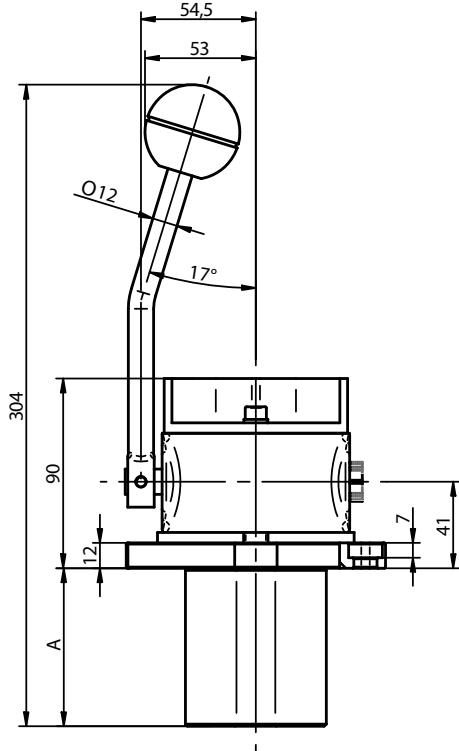


A=75 mm FOR 1/4" BSP PORTS
A=82 mm FOR 9/16"-18 UNF SAE6 PORTS

HYDRAULIC PILOT CONTROL HPVB/E Installation Drawing

EO1 PILOT OPERATED CONTROL

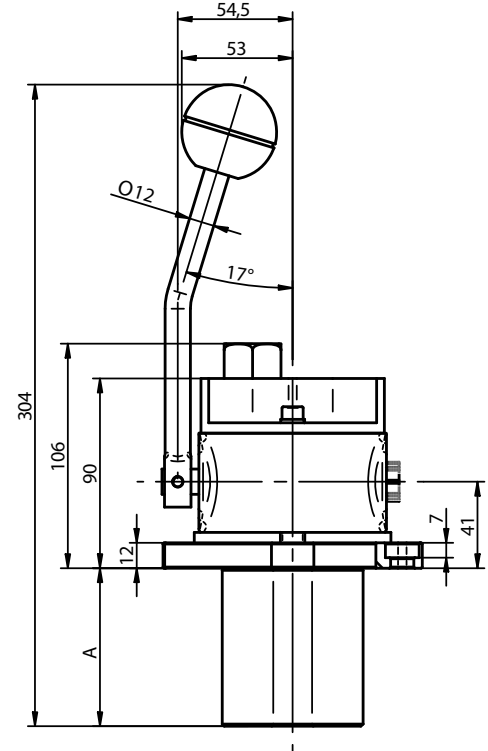
single side lever with return spring



A=75 mm FOR 1/4" BSP PORTS
A=82 mm FOR 9/16"-18 UNF SAE6 PORTS

EO2 PILOT OPERATED CONTROL

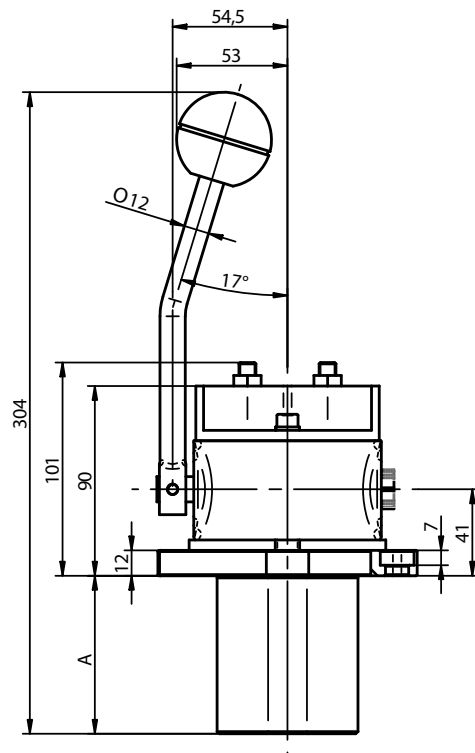
single side lever with mechanical detent



A=75 mm FOR 1/4" BSP PORTS
A=82 mm FOR 9/16"-18 UNF SAE6 PORTS

EO3 PILOT OPERATED CONTROL

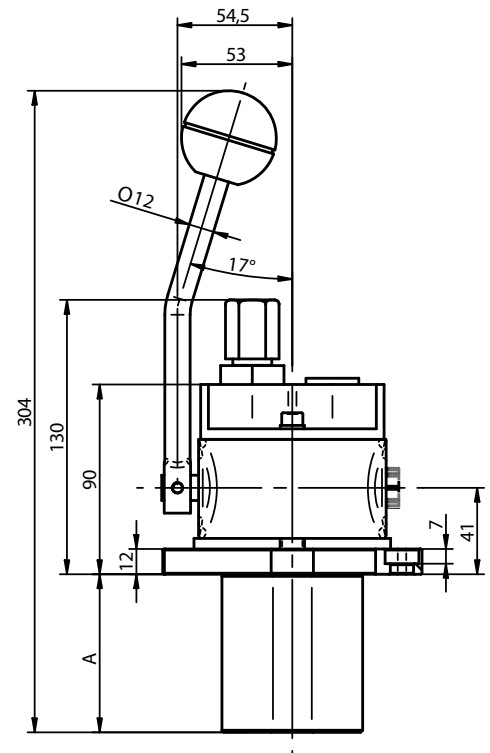
single side lever with detent in any position



A=75 mm FOR 1/4" BSP PORTS
A=82 mm FOR 9/16"-18 UNF SAE6 PORTS

EO4 PILOT OPERATED CONTROL

single side lever with detent in any position + neutral position sensor

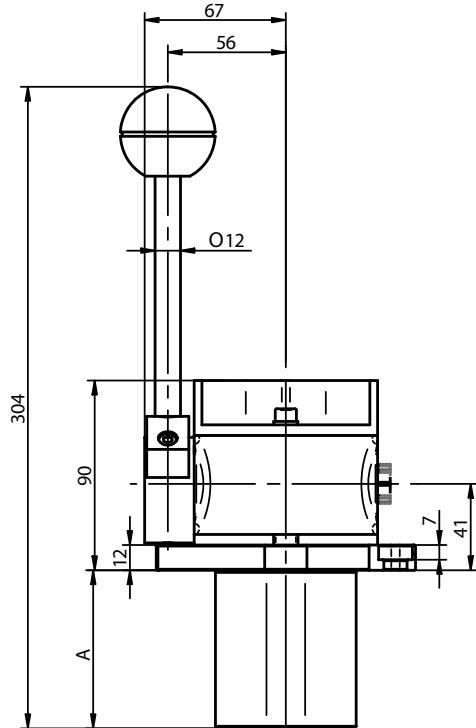


A=75 mm FOR 1/4" BSP PORTS
A=82 mm FOR 9/16"-18 UNF SAE6 PORTS

HYDRAULIC PILOT CONTROL HPVB/E Installation Drawing

E05 PILOT OPERATED CONTROL

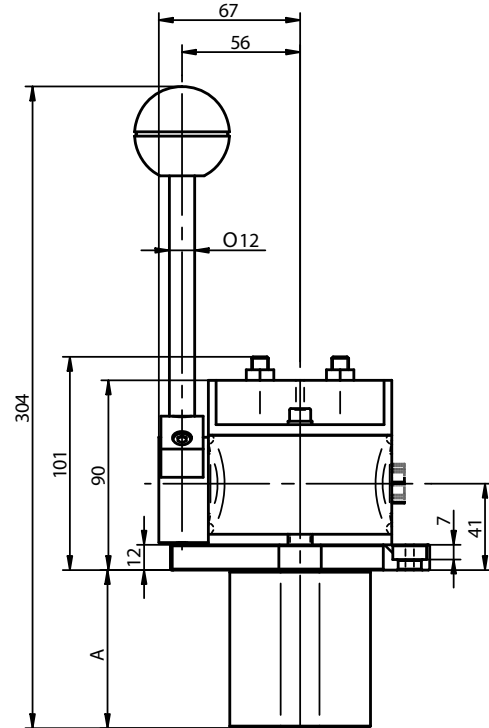
single side lever with detent in rest



A=75 mm FOR 1/4" BSP PORTS
A=82 mm FOR 9/16"-18 UNF SAE6 PORTS

E06 PILOT OPERATED CONTROL

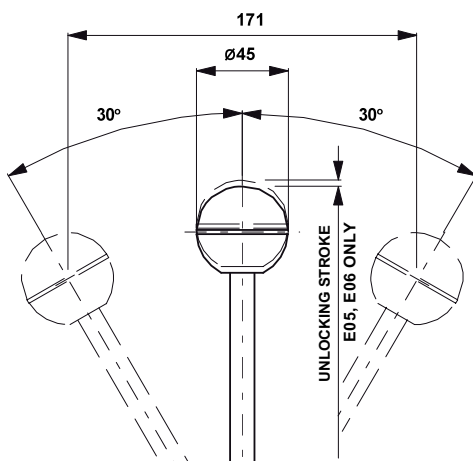
single side lever with detent in rest and clutch in any position



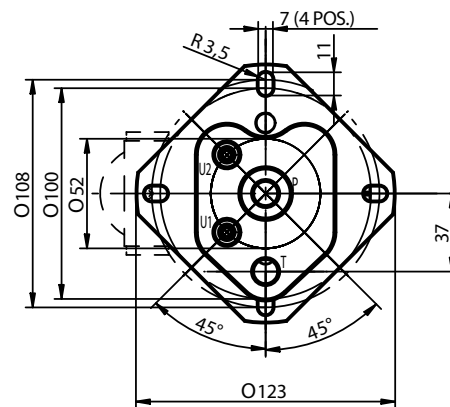
A=75 mm FOR 1/4" BSP PORTS
A=82 mm FOR 9/16"-18 UNF SAE6 PORTS

HPVE SERIES TYPICAL TECHNICAL DATA

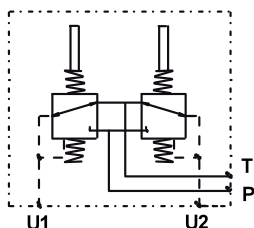
TYPICAL RANGE OF LEVER MOVEMENT



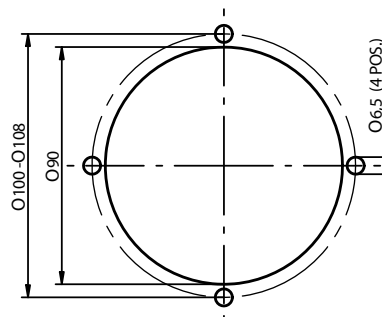
TYPICAL PORT ARRANGEMENT



TYPICAL HYDRAULIC CIRCUIT DIAGRAM

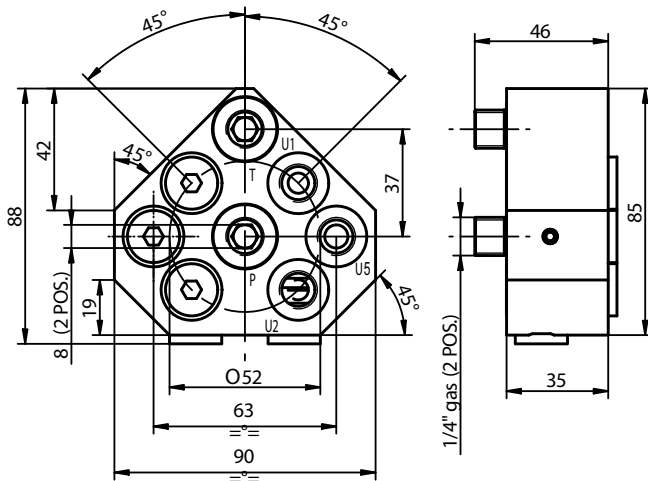


TYPICAL INSTALLATION DIMENSIONS

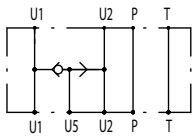


HYDRAULIC PILOT CONTROL HPVB/E Installation Drawing

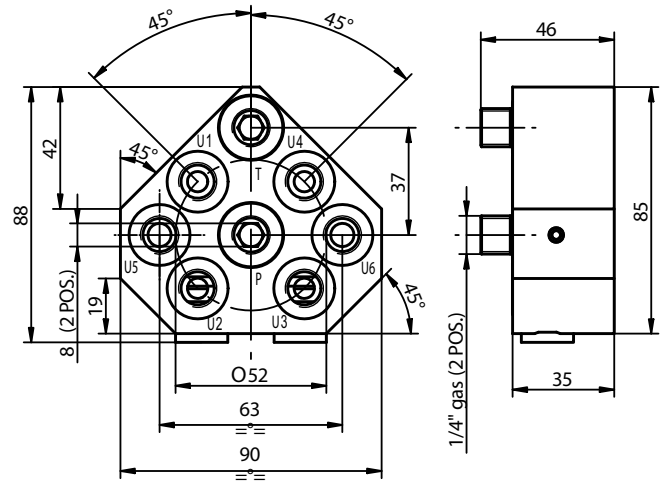
S1 SHUTTLE BLOCK



HYDRAULIC CIRCUIT DIAGRAM



S3 SHUTTLE BLOCK



HYDRAULIC CIRCUIT DIAGRAM

