

HPVM SERIES

HYDRAULIC PILOT CONTROL



HYDRAULIC PILOT CONTROL HPVM

HPVM Pilot Control Valves are part of the comprehensive range of our product.

The product, with its double lever single axis control, and supported by an extensive range of control curve characteristics and handle options, makes it suitable for a wide range of both mobile and industrial applications.

Our engineers can offer specialist support to optimise this product to suit your application. The product is supported by a comprehensive sales and service facility around the world.

BENEFITS

- Compact and light weight
- Suitable for arm rest of console mounting
- Compatible with a wide range of product
- Stylish good looks suitable for modern cabs
- Operator is insulated from high temperature components
- Proven, simple pressure reducing elements
- Wide range of low hysteresis, high accuracy, pressure control curves
- Wide range of electrical options in both standard and multi-functional ergonomic handles
- Low effort lever control

ORDER CODE

HPVM XX X XX F X X XX

Micro Switch options

- M1** = 1 switch senses out of center position
- M2** = 2 switches sense movement away from neutral each way
- M3** = 1 switch senses forward movement away from neutral
- M4** = 1 switch senses backward movement away from neutral

Port Size & Type

- = Omit for 1/4" BSP
- S** = 7/16"-20 UNF SAE #4

Return Spring

- 0** = 1.4 to 2.8 daN (Standard)
- 1** = 3.0 to 4.5 daN

- F** = Standard Control Plunger

Metering curve

see *PCV Characteristics* catalogue

Handle type

- see *Handles* catalogue
- W** = Without Handle

Basic Model Number - includes 2 service ports

- 01** = lever spring returned to neutral
- 02** = lever detented in any position
- 03** = lever detented in any position with neutral sensor
- 04** = lever detented at both stroke ends
- 05** = lever detented in neutral position
- 06** = lever detented in neutral and friction hold in any position
- 07** = lever detented to U1 and spring return to neutral from U2
- 08** = lever detented to U2 and spring return to neutral from U1

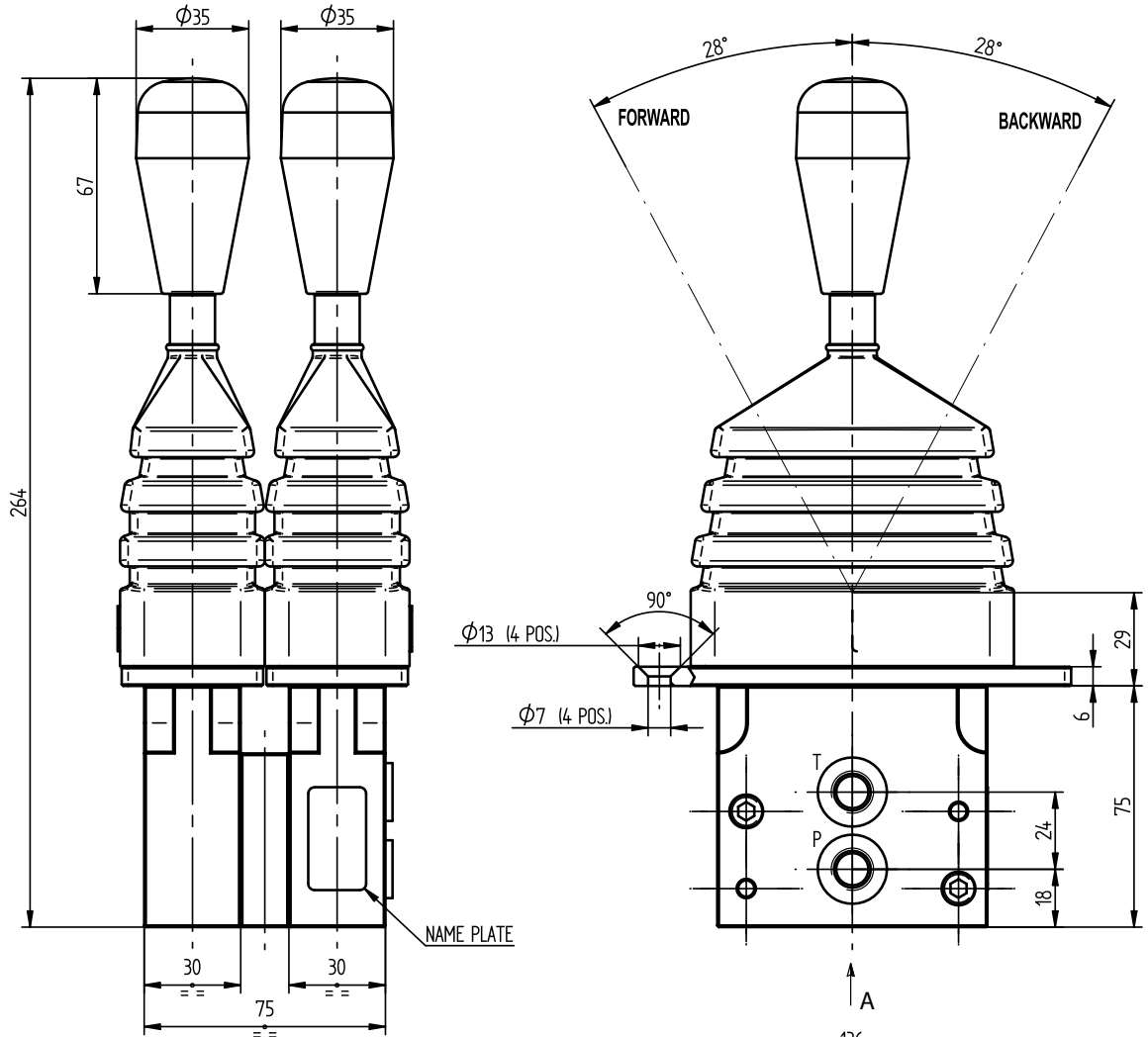
- HPVM** = sectional hydraulic compact pilot valve series M

Ordering key for multiple sectional HPVM assemblies is as follows:-

Code each section in turn as shown on the coding chart on this page and then put them in sequence as shown in the example below.

Example: 2 section assembly -
HPVM01KB001F0+HPVM02KL015F0

HYDRAULIC PILOT CONTROL HPVM Technical Data and Installation Drawing



PORT OPTIONS

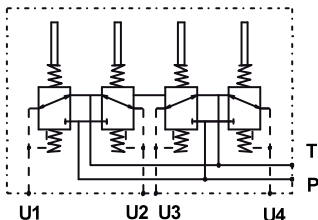
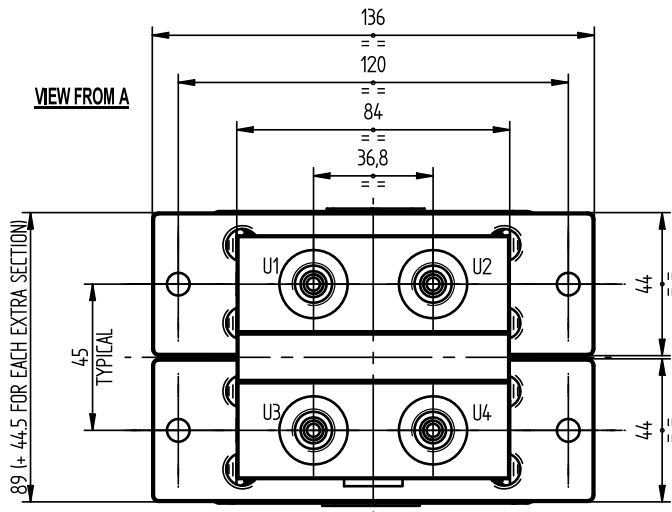
P, T, U1, U2, U3, U4:
1/4" BSP OR 7/16" - 20 UNF SAE #4

TECHNICAL SPECIFICATIONS

Maximum Inlet Pressure at Port P: 50 bar
 Maximum Back Pressure at Port T: 3 bar
 Inlet Flow Range: 5 to 20 litre/min
 Maximum Hysteresis Band: +/- 0.5 bar
 Fluid: Hydraulic Mineral Oil ISO HM E HV
 Contamination Class: 21/16/13 - ISO 4406/1999
 Fluid Temperature Range: -20 to +80 °C

INSTALLATION DATA

Extra Pilot Valve Sections can be added as required. On a third section the ports will be designated U5 & U6, on a fourth section the ports will be designated U7 & U8 etc.



CIRCUIT DIAGRAM

