

HPVS SERIES

HYDRAULIC PILOT CONTROL



HYDRAULIC PILOT CONTROL HPVS

HPV Pilot Control Valves are part of the comprehensive range of our product.

The product, with its single lever single axis control, and supported by an extensive range of control curve characteristics and handle options, makes it suitable for a wide range of both mobile and industrial applications.

Our engineers can offer specialist support to optimise this product to suit your application. The product is supported by a comprehensive sales and service facility around the world.

BENEFITS

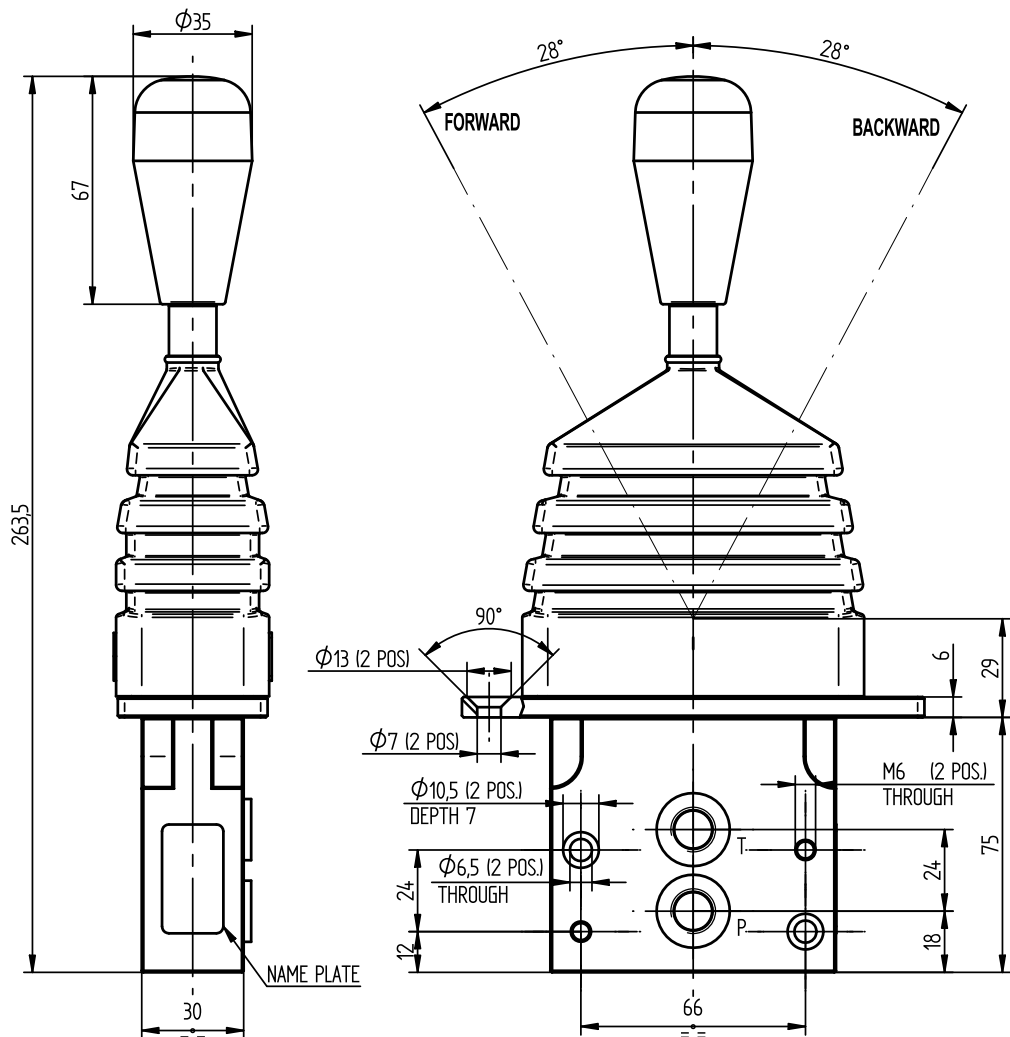
- Compact and light weight
- Suitable for arm rest of console mounting
- Compatible with a wide range of product
- Stylish good looks suitable for modern cabs
- Operator is insulated from high temperature components
- Proven, simple pressure reducing elements
- Wide range of low hysteresis, high accuracy, pressure control curves
- Wide range of electrical options in both standard and multi-functional ergonomic handles
- Low effort lever control

ORDER CODE

HPVS XX X XX F X X XX

Micro Switch options	
M1	= 1 switch senses out of center position
M2	= 2 switches sense movement away from neutral each way
M3	= 1 switch senses forward movement away from neutral
M4	= 1 switch senses backward movement away from neutral
Port Size & Type	
<input type="checkbox"/>	= Omit for 1/4" BSP
S	= 7/16"-20 UNF SAE #4
Return Spring	
0	= 1.4 to 2.8 daN (Standard)
1	= 3.0 to 4.5 daN
F	= Standard Control Plunger
Metering curve	
see <i>PCV Characteristics</i> catalogue	
Handle type	
see <i>Handles</i> catalogue	
W	= Without Handle
Basic Model Number - includes 2 service ports	
01	= lever spring returned to neutral
02	= lever detented in any position
03	= lever detented in any position with neutral sensor
04	= lever detented at both stroke ends
05	= lever detented in neutral position
06	= lever detented in neutral and friction hold in any position
07	= lever detented to U1 and spring return to neutral from U2
08	= lever detented to U2 and spring return to neutral from U1
HPVS	= sectional hydraulic compact pilot valve series S

HYDRAULIC PILOT CONTROL HPVS Technical Data and Installation Drawing

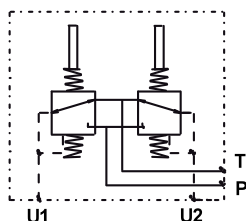
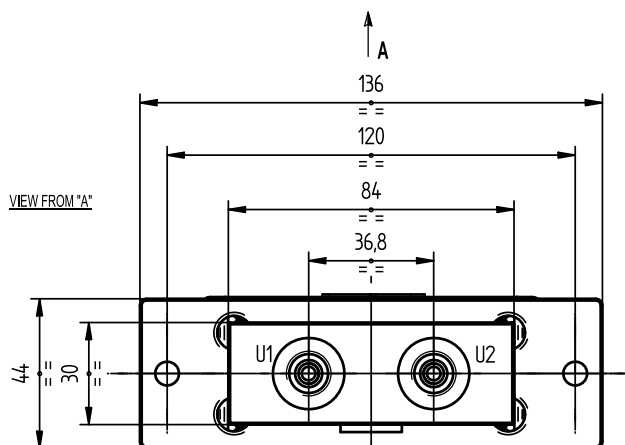


PORT OPTIONS

P, T, U1, U2, U3, U4:
1/4" BSP OR 7/16"-20 UNF SAE #4

TECHNICAL SPECIFICATIONS

Maximum Inlet Pressure at Port P: 50 bar
 Maximum Back Pressure at Port T: 3 bar
 Inlet Flow Range: 5 to 20 litre/min
 Maximum Hysteresis Band: +/- 0.5 bar
 Fluid: Hydraulic Mineral Oil ISO HM E HV
 Contamination Class: 21/16/13 - ISO 4406/1999
 Fluid Temperature Range: -20 to +80 °C



CIRCUIT DIAGRAM

