

SUH SERIES

PILOT SUPPLY UNIT



PILOT SUPPLY UNITS SUH

The SUH is a direct acting pressure reducing valve which can be connected to either one or two main circuits via ports P1 and P2. Both ports feed through a shuttle valve to prevent circuit interaction. Reduced pressure is supplied to port P1 and P2.

A pre-set relief valve is fitted to prevent over pressure, and the unit is supplied with an accumulator connection for emergency power supply.

An solenoid attachment is available to act as a safety system and to maintain the accumulator charge for a longer period by preventing leakage downstream from the "U" ports.

Also a version is available with integral filter to protect the output line and hence downstream components.

BENEFITS

- Compact unit
- Optional accumulator for peak and emergency power
- Optional 2 way & 3 way, 12 or 24 V DC solenoid valves for safety and extended accumulator storage time
- Dual ports for maximum installation flexibility

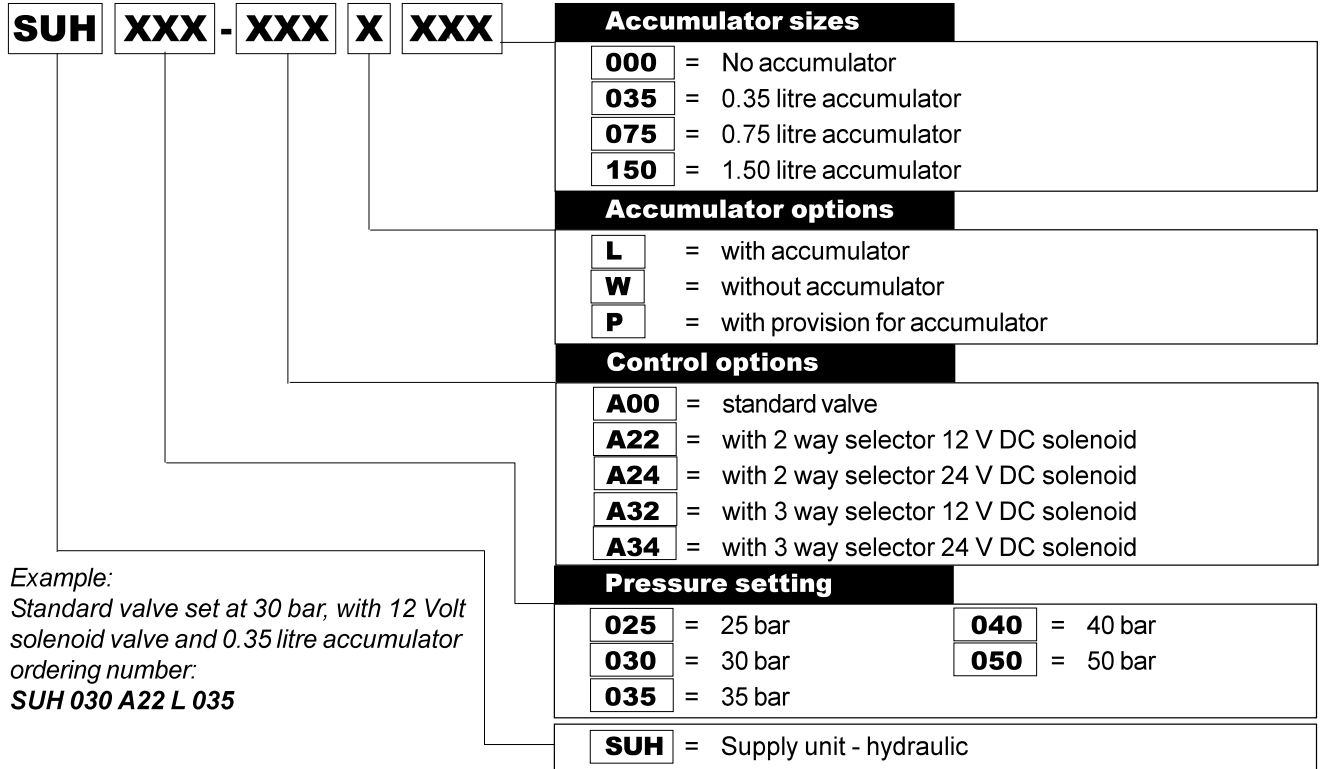
TECHNICAL FEATURES

Input pressure P	: Min 8 bar, Max 350 bar
Output pressure (nominal)	: 30 bar
Max. pressure on drain port T	: 3 bar
Relief valve setting (nominal)	: 45 bar
Max. accumulator pressure	: 210 bar (Nitrogen pre-charge 13 bar)
Flow capacity at ports S	: 5 l/min. without accumulator up to 40 l/min. with accumulator
Hydraulic fluids	: ISO HM & HV bio-degradeable fluids
Fluid temperature range	: -20 to +80°C
Fluid viscosity	: 2.8 to 380 mm ² /sec
Maximum filter rating	: 25 µm (absolute)

Description	Weight (kg)
BASIC SUH VALVE	2.36
0.35 LITRE ACCUMULATOR	3.00
0.75 LITRE ACCUMULATOR	4.00
1.50 LITRE ACCUMULATOR	6.20
2WAY SELECTOR	0.50
3WAY SELECTOR	0.70

PILOT SUPPLY UNITS SUH

ORDER CODE



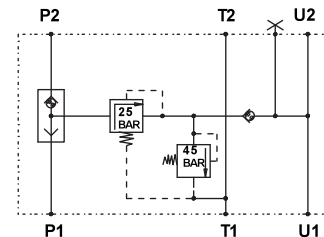
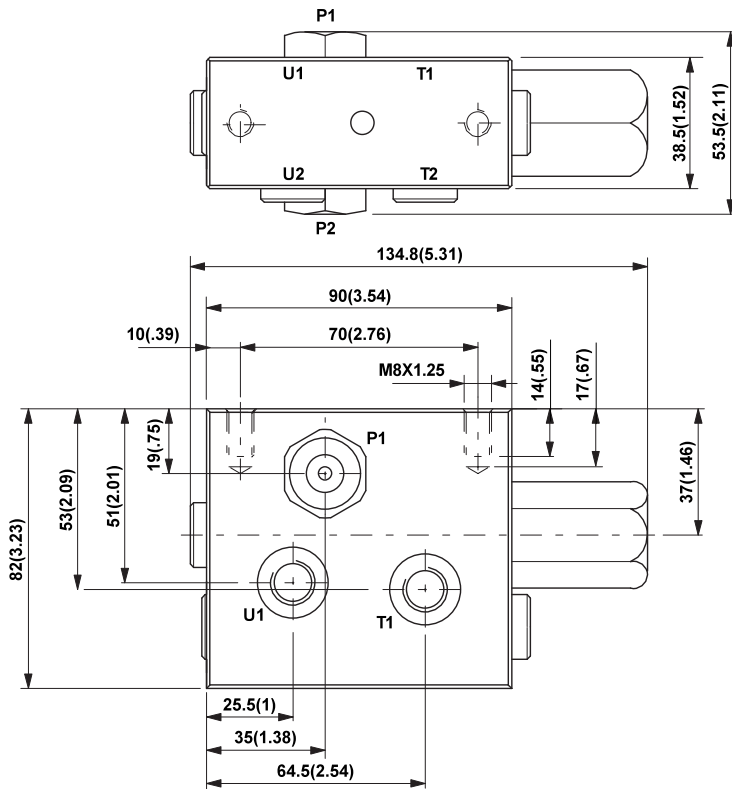
Example:
 Standard valve set at 30 bar, with 12 Volt solenoid valve and 0.35 litre accumulator ordering number:
SUH 030 A22 L 035

PILOT SUPPLY UNITS SUH

Installation Drawing

SUH-xxx-A00-W-000

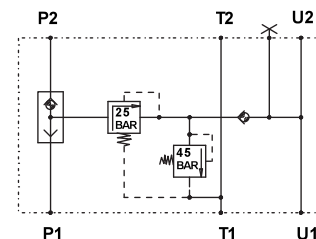
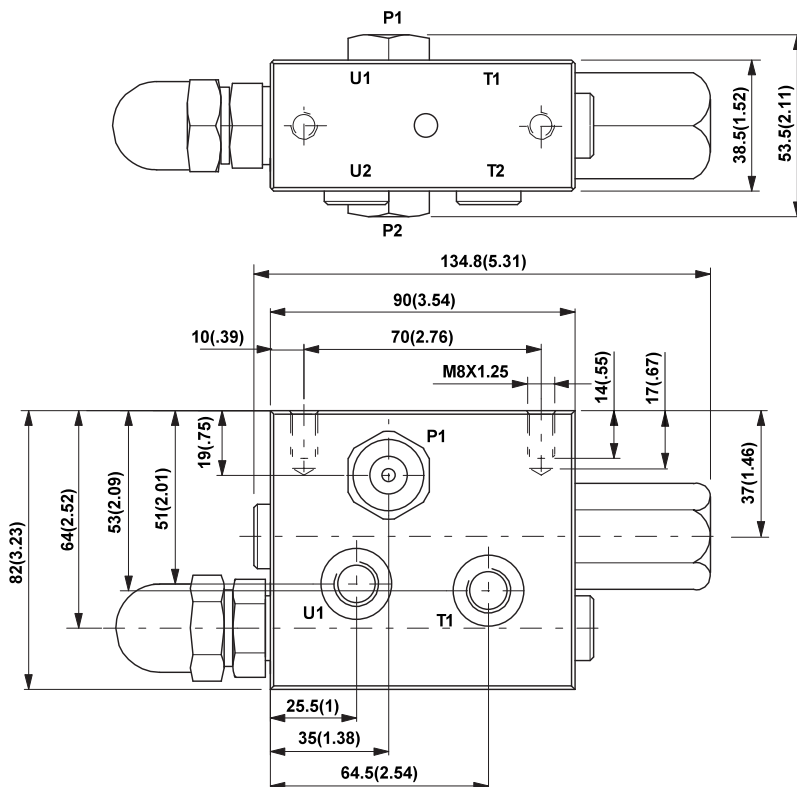
standard valve with no accumulator and no provision for an accumulator



CIRCUIT DIAGRAM

SUH-xxx-A00-P-000

standard valve with no accumulator and with provision for an accumulator

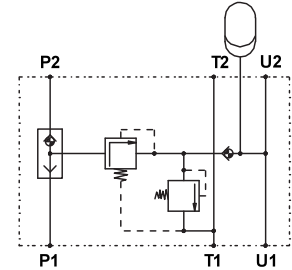
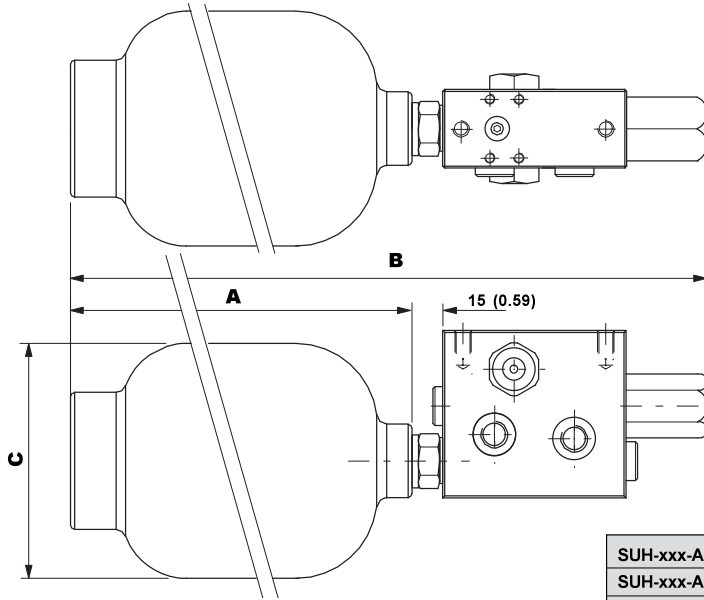


CIRCUIT DIAGRAM

PILOT SUPPLY UNITS SUH Installation Drawing

SUH-xxx-A00-L-xxx

standard valve with accumulator / with no solenoid



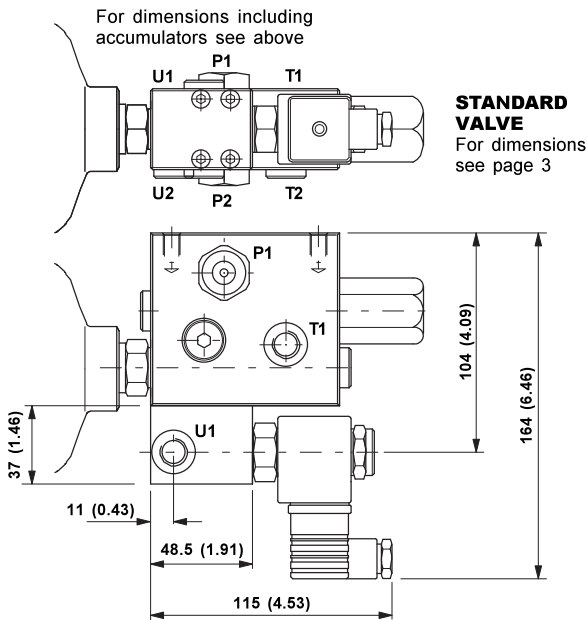
TYPICAL CIRCUIT DIAGRAM

STANDARD VALVE
For dimensions see page 3

	Accumulator Capacity	A Accumulator Length	B Overall Unit Length	C Maximum Diameter
SUH-xxx-A00-L-035	0.35 litres	162 (6.38)	302 (11.89)	99 (3.90)
SUH-xxx-A00-L-075	0.75 litres	200 (7.87)	340 (13.39)	115 (4.53)
SUH-xxx-A00-L-150	1.50 litres	295 (11.61)	435 (17.13)	115 (4.53)

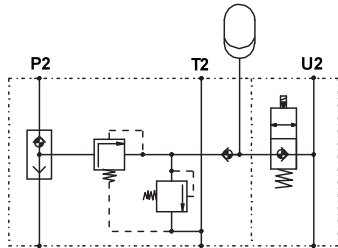
SUH-xxx-A22-L-xxx

valve with accumulator and 12V DC 2-way solenoid



For dimensions including accumulators see above

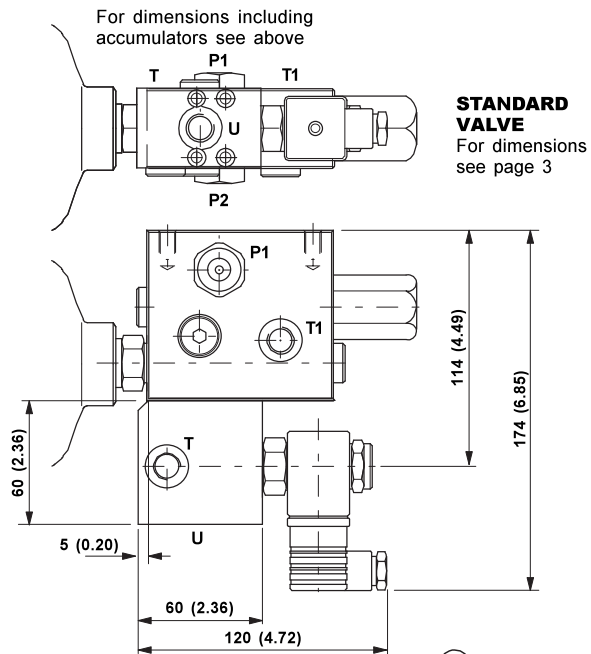
STANDARD VALVE
For dimensions see page 3



CIRCUIT DIAGRAM

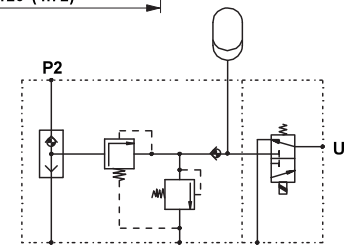
SUH-xxx-A34-L-xxx

valve with accumulator and 24V DC 3-way solenoid



For dimensions including accumulators see above

STANDARD VALVE
For dimensions see page 3



CIRCUIT DIAGRAM