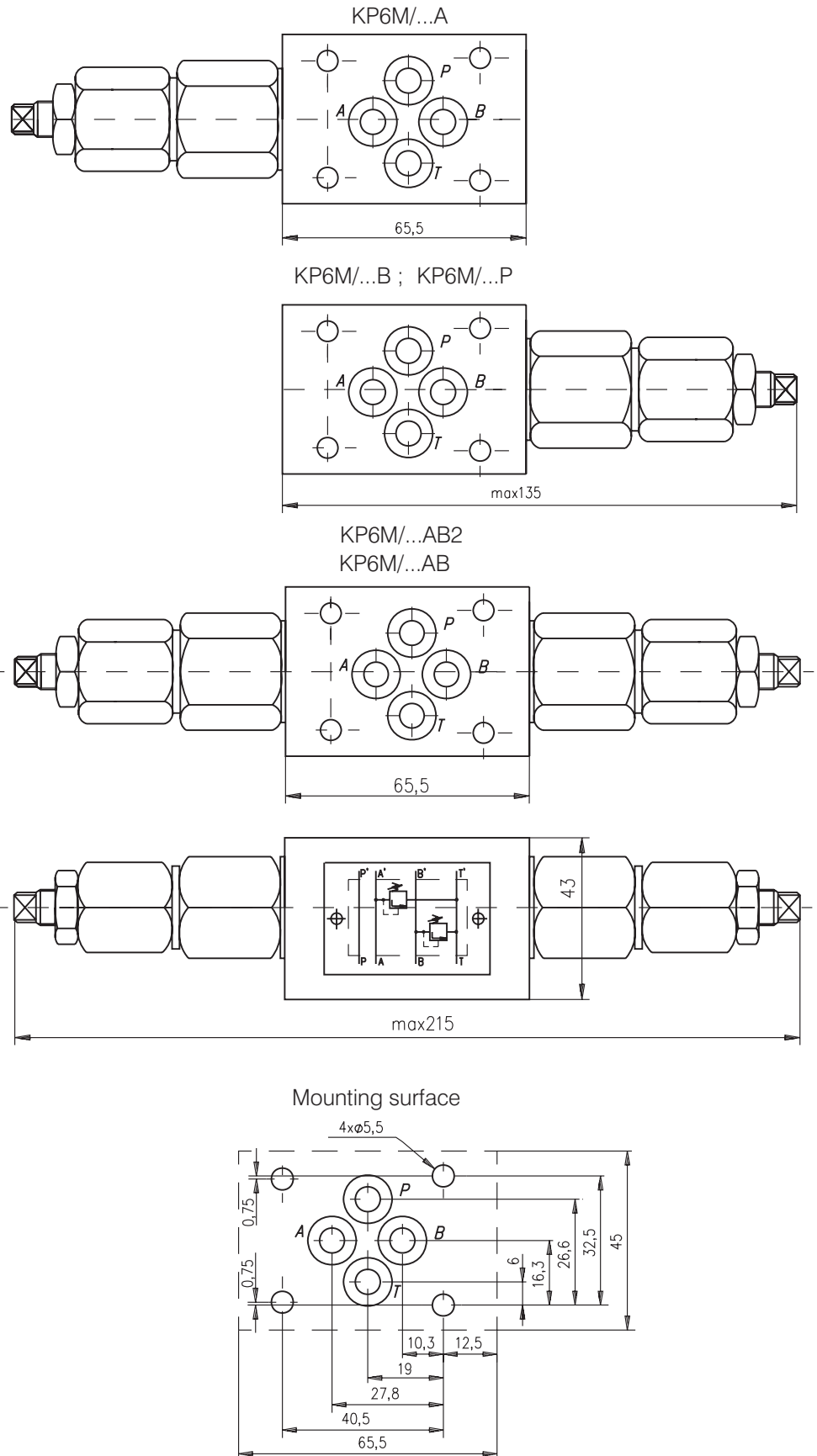
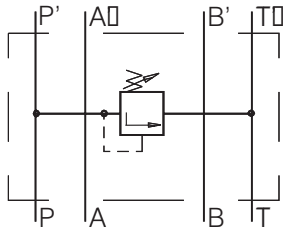


DESCRIPTION

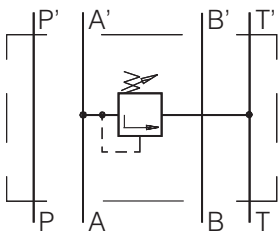
- ✓ Pressure relief valve with pilot operation.
- ✓ Adjustment of the pressure range at line A to T: KP6M/10A , KP6M/20A , KP6M/32A.
- ✓ Adjustment of the pressure range at line B to T: KP6M/10B , KP6M/20B , KP6M/32B.
- ✓ Adjustment of the pressure range at line P to T: KP6M/10P , KP6M/20P , KP6M/32P.
- ✓ Adjustment of the pressure range at line A&B to T: KP6M/10AB , KP6M/20AB , KP6M/32AB.
- ✓ Adjustment of the pressure range at line A to B&B to A: KP6M/10A , KP6M/20A , KP6M/32A.
- ✓ The pressure relief valve protects the hydraulic drives of overloading or damaging by limiting or maintaining a constant pressure. There is a possibility for the pressure range adjustment at a definite range.
- ✓ Mounting surface CETOP3 (NG6)

DIMENSIONS

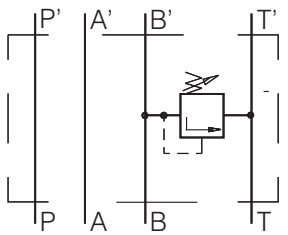


SYMBOL
ORDERING CODE


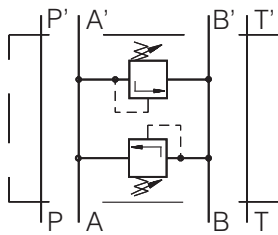
KP6M/...P



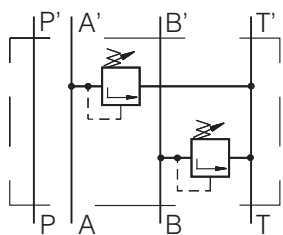
KP6M/...A



KP6M/...B



KP6M/...AB2



KP6M/...AB

| | | | | | | |
|----|---|---|---|-----|---|-----|
| KP | 6 | M | / | *** | - | *** |
|----|---|---|---|-----|---|-----|

Relief valve

Nominal bore 6mm.

Modular mounting

 Rated pressure:

| |
|-------------------|
| up to 100 bar.-10 |
| up to 200 bar.-20 |
| up to 320 bar.-32 |

 Function:

| |
|----------------------------------|
| at line A to T - A |
| at line B to T - B |
| at line P to T - P |
| at line A and B to T - AB |
| at line A to B & at B to A - AB2 |

TECHNICAL DATA

| | | |
|---|---|---------------------|
| Weight | with one relief valve with two relief valves | 1,150kg 1,400 kg |
| Rated flow ($\Delta p=2,5$ bar.) | | 20 l/min |
| Adjustment of pressure range: | | |
| KP6M/10P , KP6M/10A , KP6M/10B , KP6M/10AB , KP6M10AB2 | | 5...100 bar |
| KP6M/20P , KP6M/20A , KP6M/20B , KP6M/20AB , KP6M20AB2 | | 15...200 bar |
| KP6M/32P , KP6M/32A , KP6M/32B , KP6M/32AB , KP6M32AB2 | | 20...300 bar |
| Working liquid-hydraulic oils with characteristics: | | |
| -viscosity | | 10...400 cSt |
| -degree of filtration | | 0,025 mm |
| -temperature | | -20...+80°C |