



6/2 WAY DIVERTER VALVES KV - HIGH PRESSURE

- NG 16
- Up to 450 bar [6 527 PSI]
- Up to 300 L/min [79.25 GPM]
- Hydraulically operated

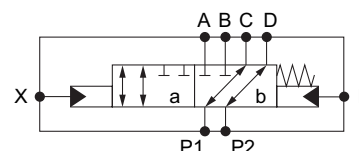


KV-6/2-16-H

Operation

6/2 directional valves are normally used for selection between two consumers or two hydraulic circuits which are not operated simultaneously. Control spool is operated by pilot pressure acting on port X. Return of the spool to the initial position is assured by the return spring.

Hydraulic symbol



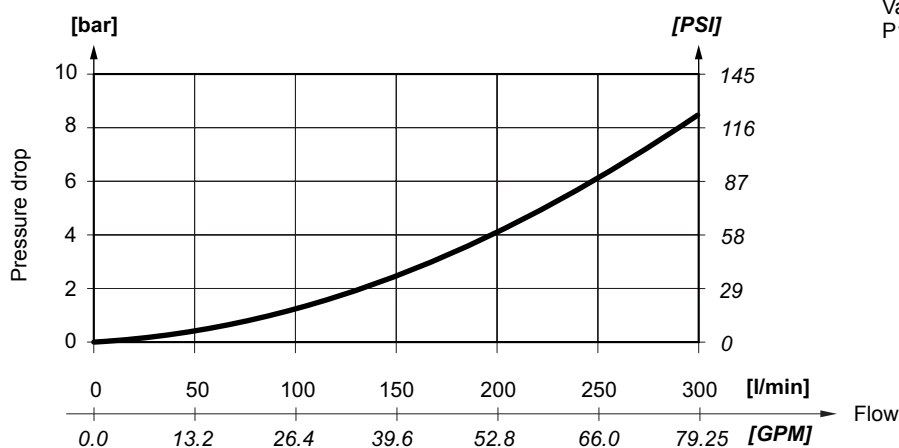
Features

Max pressure	bar [PSI]	450 [6 527]
Minimal pilot pressure X for spool shift*	bar [PSI]	36 [522]
Max pressure on port X and L	bar [PSI]	210 [3 045]
Max flow range	L/min [GPM]	300 [79.25]
Oil temperature range	°C [°F]	-20 to +70 [-4 to 158]
Viscosity range	mm ² /s [SUS]	15 to 380 [69.5 to 1760]
Fluid contamination	ISO 4406: 1999	19/17/14
Mass	kg [lb]	16,8 [37.04]

* Valid for operation at flow 250 L/min [66.0 GPM] and pressure 450 bar [6 527 PSI]. At lower p-Q load the pilot pressure can be also lower.

ΔP-Q Performance curves

Measured at 50 °C [122 °F] and viscosity 32 mm²/s [148 SUS].



Valid for flow directions:
P1-C, D-P2, P1-A, B-P2

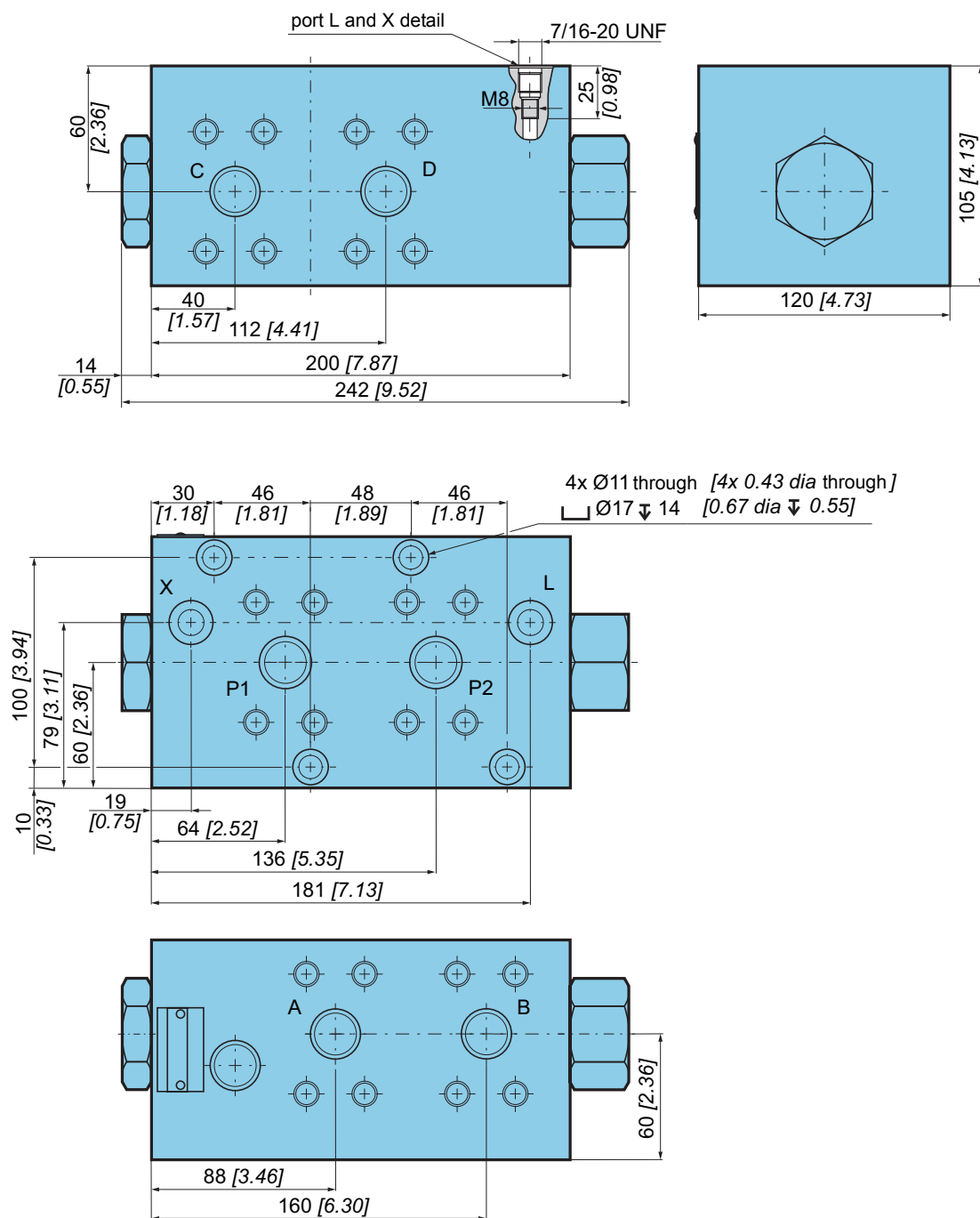
Mechanically operated

Hydraulically operated

Electrically operated



Dimensions



Installation

Mounting position: Indifferent



4xM10

Class

8.8



N.m [lb.ft]

49 [36]

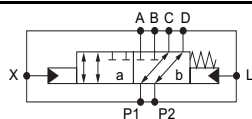
(*) As per standard DIN 912

**Model code**

K V - **6** / **2** - **16** - **H** - **SAE1** - **450** - **RAL** - *****

Operation

Hydraulically operated

H**Spool type**

No designation

Ports

P1, P2, A, B, C, D - SAE, 6000 PSI
X, L - 7/16-20 UNF

SAE1**Max working pressure bar [PSI]**

450 [6 527]

450

350 [5 076]

No designation

Special requirements

To be briefly specified

Surface protection

No designation Phosphated

RAL Painted RAL 9005**ZN** Zinc coated**Seal type**

No designation NBR seals for mineral oil HL, HLP

E FMM seals for HETG, HEES, HEPG

Mechanically operated

Hydraulically operated

Electrically operated