



3/2 WAY DIRECTIONAL VALVES KVC

- NG 10
- Up to 350 bar [5 076 PSI]
- Up to 100 L/min [26.4 GPM]
- Direct in-line mounting.
- Plug-in connector for solenoids to ISO 4400.
- Threaded connections to ISO 9974 (Metric), ISO 1179 (BSPP/Gas), ISO 11926 (UNF).
- Protection of solenoid IP65 to EN 50529 / IEC 60529.



KVC-3/2-10

Operation

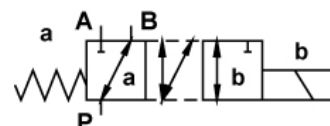
Directional valves type KVC-3/2-10 with direct solenoid operation are used to control the direction of hydraulic fluid flow.

Type KVC-3/2-10 is a reduced version of type KV-6/2. It is used for alternate control of two one-pipe working units (e.g. Plunger) with common, main directional valve.

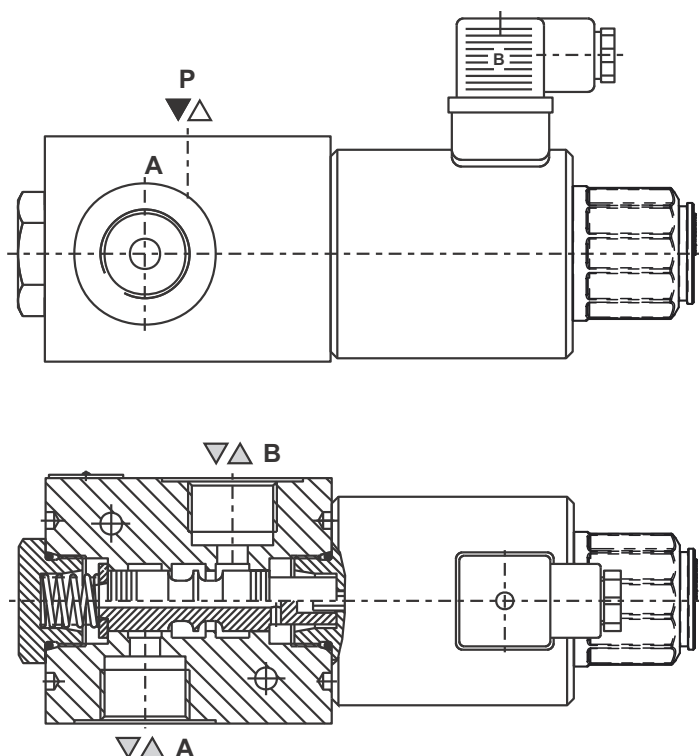
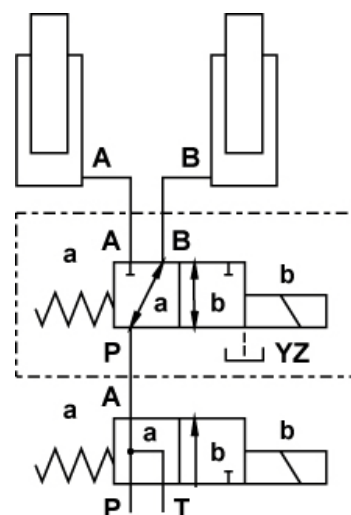
It is also very proper as bypass valve.

The change-over can also be done manually by pressing the emergency manual override.

Hydraulic symbol



Mounting example



Mechanically operated

Hydraulically operated

Electrically operated

Features

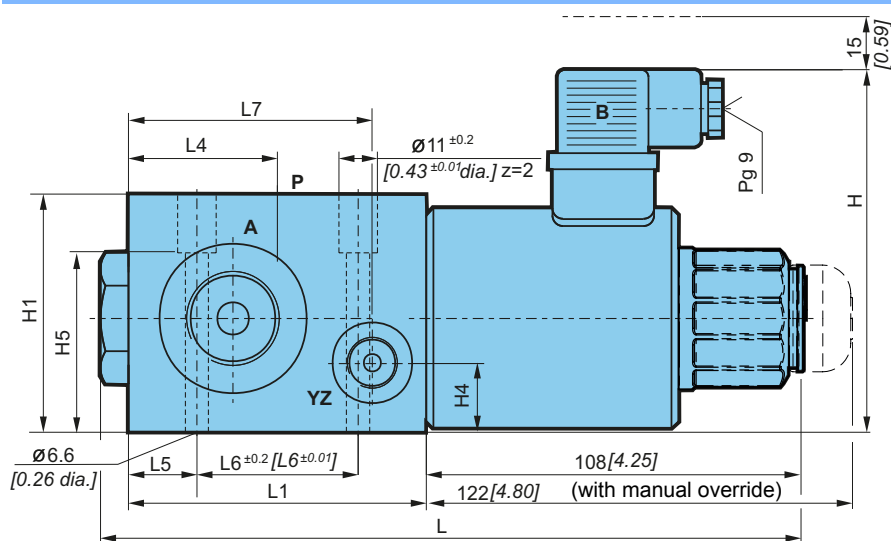
Hydraulic

Size		10
Flow rate	Without drainage	L/min [GPM]
	With drainage	
Operating pressure	Without drainage	bar [PSI]
	With drainage	
Oil temperature range	°C [°F]	-20 to +70 [-4 to +158]
Viscosity range	mm ² /s [SUS]	15 to 380 [3.24 to 82]
Mounting position		Optional
Mass	Without drainage	kg [lb]
	With drainage	
Filtration	NAS 1638	8

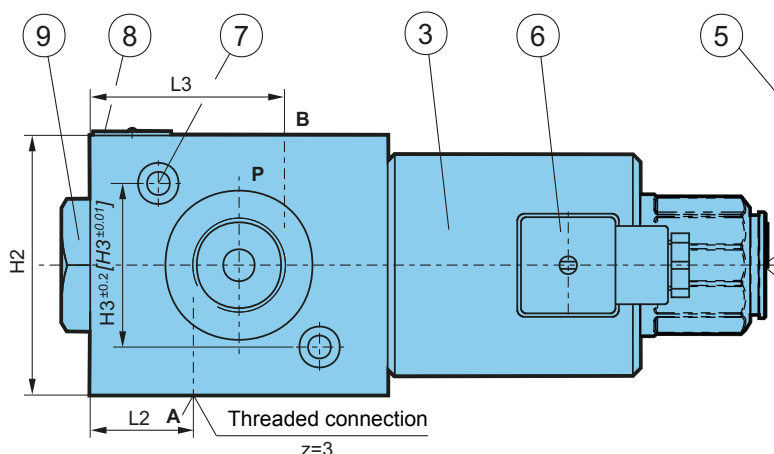
Electrical

Supply voltage	V	12, 24 DC
Power	W	45
Switching frequency	1/h	15000
Ambient temperature	°C [°F]	to +50 [to + 122]
Coil temperature	°C [°F]	to +180 [to + 356]
Duty cycle		Continuous

Dimensions



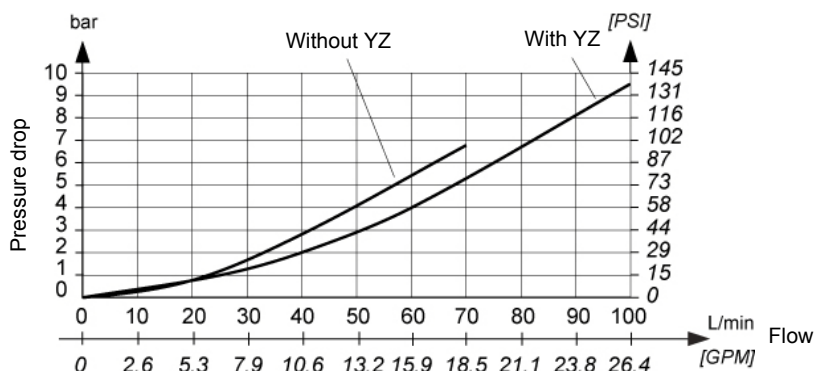
Dimensions	Without YZ	With YZ
L	201 [7.91]	210 [8.27]
L1	85 [3.34]	94 [3.70]
L2	29,5 [1.16]	31,5 [1.24]
L3	55,5 [2.18]	62,5 [2.46]
L4	42,5 [1.67]	47 [1.85]
L5	19,5 [0.76]	18 [0.71]
L6	46 [1.81]	40 [1.57]
L7	-	79,5 [3.13]
H	104 [4.09]	105 [4.13]
H1	67 [2.63]	74 [2.91]
H2	73 [2.87]	90 [3.54]
H3	46 [1.81]	66 [2.60]
H4	-	33 [1.30]
H5	50,5 [1.98]	31 [1.22]



- 3. Solenoid "b" MR-060
- 5. Emergency manual override
- 6. Plug-in connector "b" -black
- 7. Fixing screws:
-without YZ: 2 x M6x60 to ISO 4762-10.9
-with YZ: - 2 x M6x40 to ISO 4762-10.9
- 8. Nameplate
- 9. Valve cap

**ΔP-Q Performance curves**

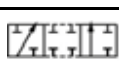
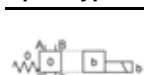
Measured at 50°C [122°F] and viscosity of 32 mm²/s [148 SUS].

**Model code**

K V C - **3** / **2** - **10** - **41B** - **12 DC** - **L** - **M22** - **3/8** - **1/2** - **3/4** - **3/4** - **SAE 12** - **1 1/16-12 UNF-2B** - **9/16-18 UNF-2B** - **7/8-14 UNF-2B** - **9/16-18 UNF-2B** - *****

Manual override option

Emergency manual override	No designation
Manual override with rubber cover	G
Lockable manual override	C

Spool type**41B****Supply voltage**

Direct voltage 24V	No designation
Direct voltage 12V	12 DC

Connector type

175301-803 without signal lamp	No designation
EN 175301-803 with signal lamp	L
EN 175301-803 without connector	K
AMP Junior timer without connector	M
Deutsch	V

Overvoltage

Without overvoltage protection	No designation
With overvoltage protection	T

Special requirements to be briefly specified**Seal type**

No designation	NBR seals for mineral oil HL, HLP to DIN 51524
E	FPM seals for HETG, HEES, HEPG to VDMA 24568 and ISO 15380

Drainage

No designation	Without YZ
YZ	With YZ
YZP	With YZ plugged

Threaded connections A,B,P ; YZ

No designation	M18x1,5 ; -
M22	M22x1,5 ; -
M20	M20x1,5 ; -
3/8	G3/8 ; -
1/2	G1/2 ; -
3/4	G3/4 ; -
3/4	G3/4 ; G1/4
SAE 12	1 1/16-12 UNF-2B ; 9/16-18 UNF-2B
SAE 10	7/8-14 UNF-2B ; 9/16-18 UNF-2B

Mechanically operated

Hydraulically operated

Electrically operated