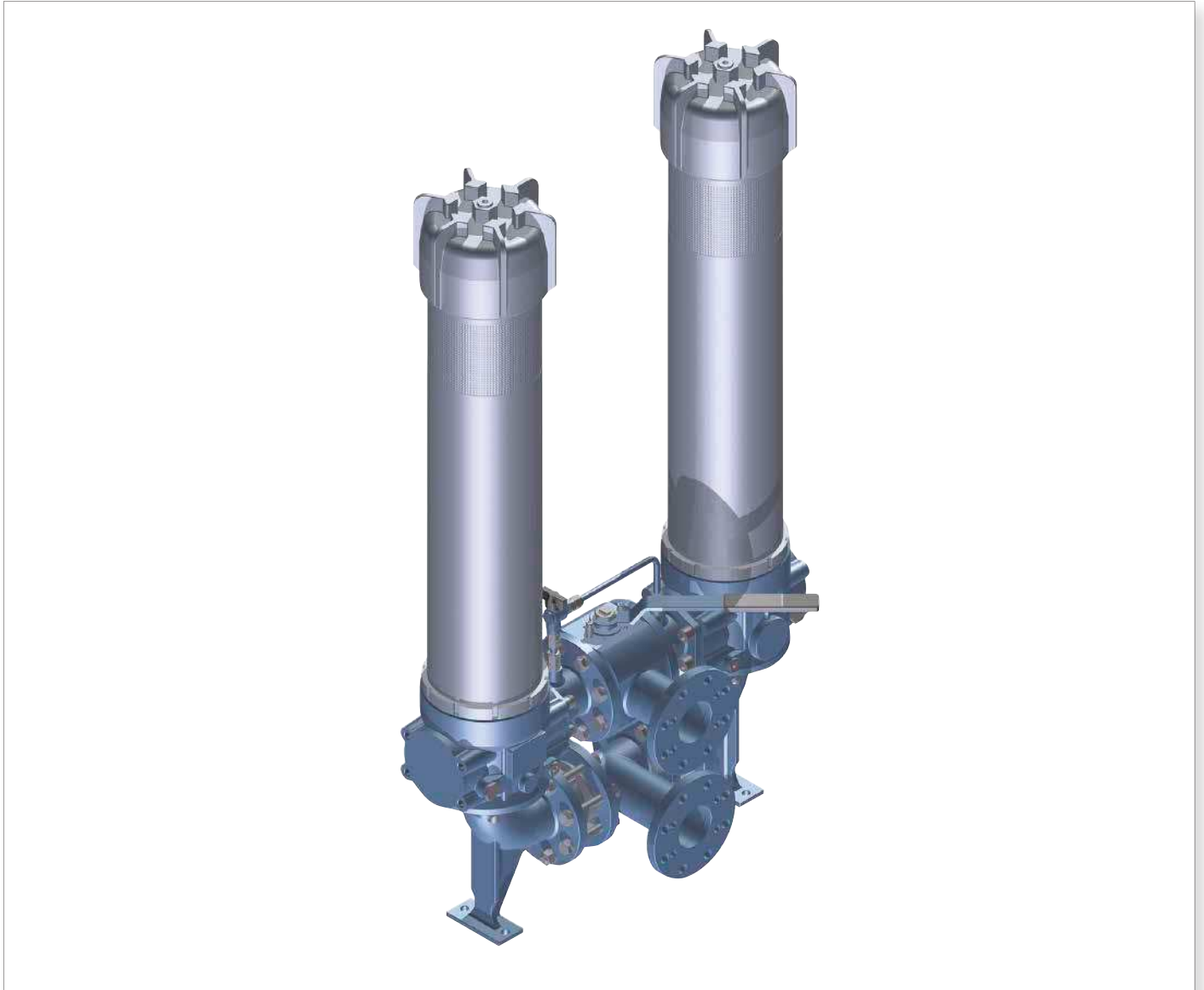


LMD 951 series

Maximum pressure up to 16 bar - Flow rate up to 1200 l/min



LMD951 GENERAL INFORMATION

Technical data

Low & Medium Pressure filters Maximum pressure up to 16 - 25 bar - Flow rate up to 1200 l/min

Filter housing materials

- Head: Anodized Aluminium
- Housing: Anodized Aluminium
- Manifolds: Welded - Painted black
- Bypass valve: Steel
- 3-way ball valve: Steel body - Stainless Steel ball
- Check valve: Cast Iron body - AISI 304 leaf

Pressure

- SAE + DIN Flange
- Working pressure: 1.6 MPa (16 bar)
- Test pressure: 2.5 MPa (25 bar)

Bypass valve

- Opening pressure 3.5 bar \pm 10%
- Other opening pressures on request.

Number of filter elements

LMD 951: 2 filter elements CU950-3

Δp element type

- Microfibre filter elements - series N: 20 bar
- Fluid flow through the filter element from OUT to IN.

Seals

FPM series V

Temperature

From -25° C to +110° C

Connections

- LMD 951: In-line Inlet/Outlet
- Same side

Note

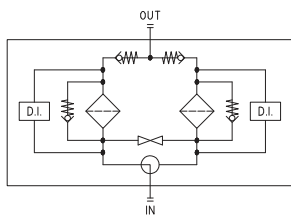
LMD 951 filters are provided for vertical mounting

Weights [kg] and volumes [dm³]

	Weights [kg]		Volumes [dm ³]	
	DN 80	DN 100	DN 80	DN 100
LMD 951	102	130	62	66

Hydraulic symbols

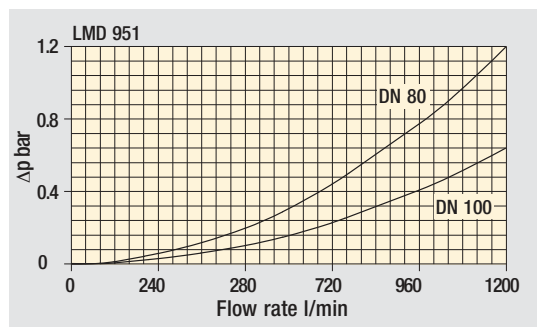
LMD 400-401-431-951



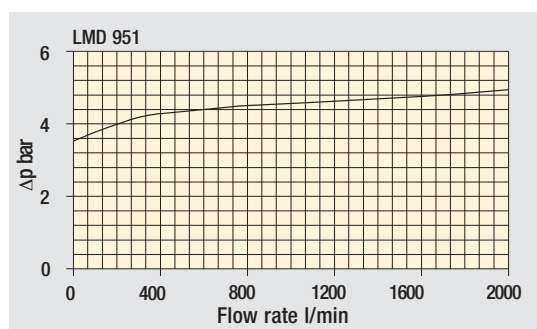
The curves are plotted using mineral oil with density of 0.86 kg/dm³ in compliance with ISO 3968.

Δp varies proportionally with density.

Pressure drop



Filter housings Δp pressure drop



Bypass valve pressure drop

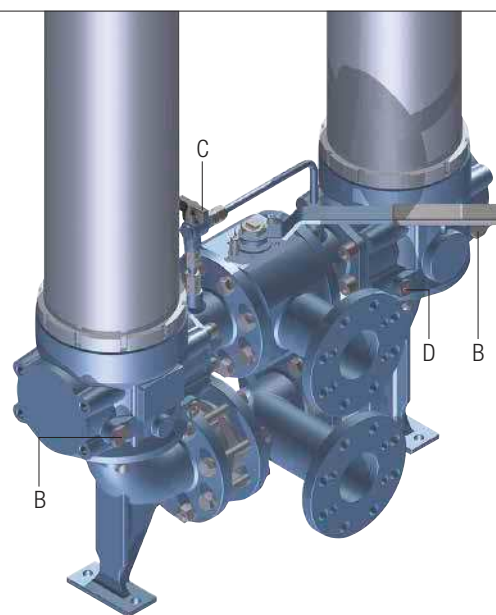
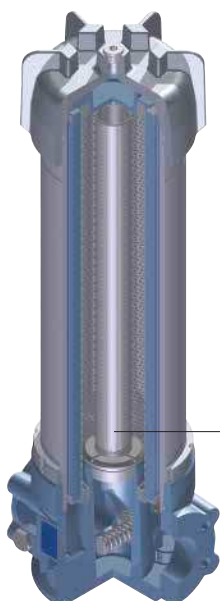
Focus on

P2 EXECUTION

Execution P02
"Internal tube for reduced flow rate"
is recommended for flow rates
lower than 150 l/min.

The use of option P02
makes it easier to fill the housing
with the operating fluid.

"Internal tube for reduced flow rates"



LMD 951
Fit one differential indicator
for individual filter assembly.

- A** Breather plug G1/2" - A/F 10
- B** Indicator port Plug T2 - A/F 30
- C** Compensation valve
- D** Oil drain plug G1/2" - A/F 10

LMD951

Designation & Ordering code

COMPLETE FILTER

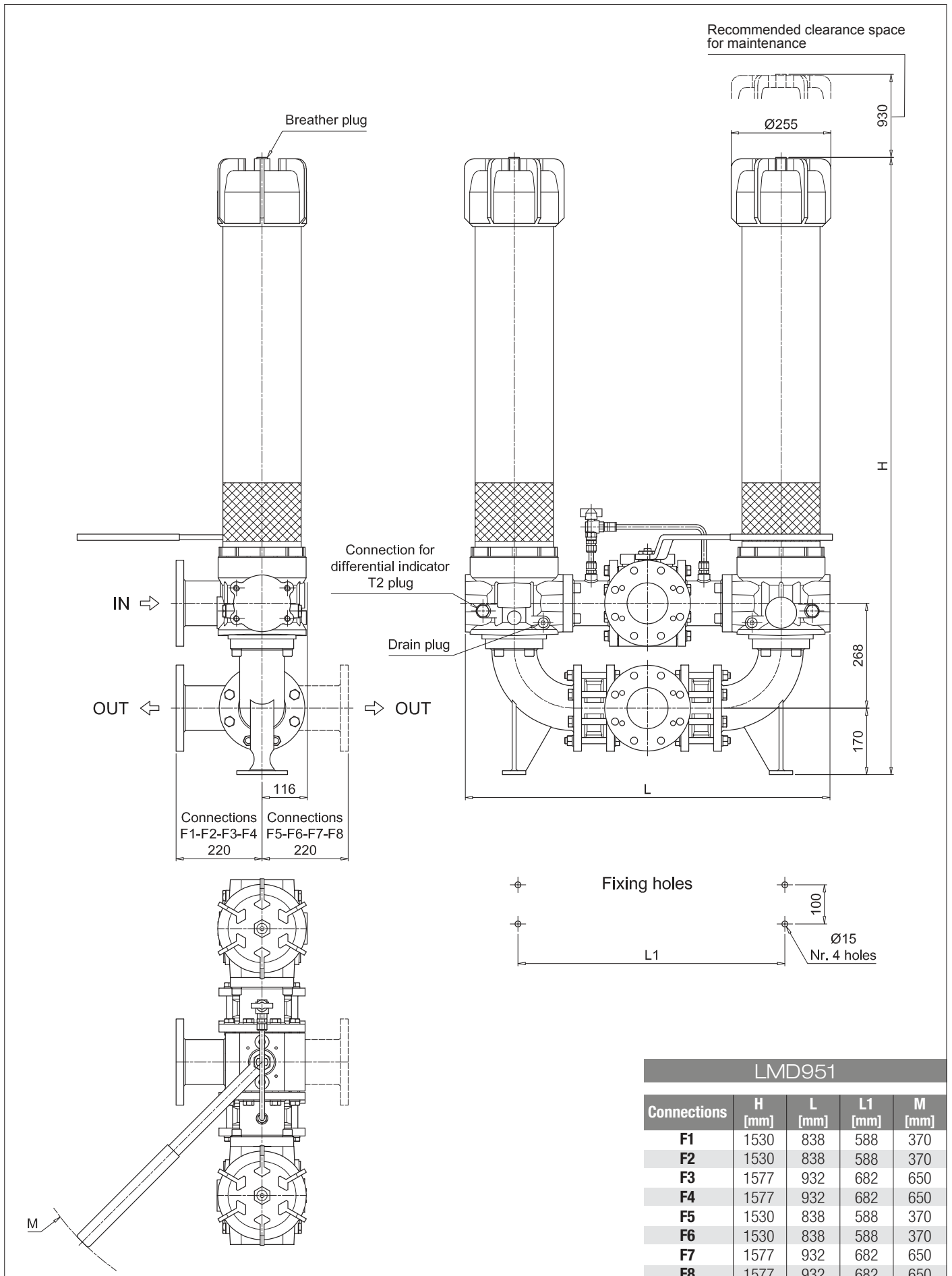
Series ad size LMD951	Configuration example: LMD951 3 B V F1 A10 N P01						
Filter length 3							
Bypass valve S Without bypass B 3.5 bar							
Seals and treatments V FPM							
Connections F1 3" SAE 3000 psi/M F2 3" SAE 3000 psi/UNC F3 4" SAE 3000 psi/M F4 4" SAE 3000 psi/UNC F5 3" SAE 3000 psi/M, In-line connections F6 3" SAE 3000 psi/UNC, In-line connections F7 4" SAE 3000 psi/M, In-line connections F8 4" SAE 3000 psi/UNC, In-line connections							
Filtration rating (filter media) A03 Inorganic microfiber 3 µm M25 Wire mesh 25 µm A06 Inorganic microfiber 6 µm M60 Wire mesh 60 µm A10 Inorganic microfiber 10 µm M90 Wire mesh 90 µm A16 Inorganic microfiber 16 µm P10 Resin impregnated paper 10 µm A25 Inorganic microfiber 25 µm P25 Resin impregnated paper 25 µm							
	Filter element Δp N 20 bar	Execution P01 MP Filtri standard P02 With internal reduced flow rate tube Pxx Customized					

FILTER ELEMENT

Filter element series ad size CU951	Configuration example: CU951 3 A10 V N P01					
Filter element length 3						
Filtration rating (filter media) A03 Inorganic microfiber 3 µm M25 Wire mesh 25 µm A06 Inorganic microfiber 6 µm M60 Wire mesh 60 µm A10 Inorganic microfiber 10 µm M90 Wire mesh 90 µm A16 Inorganic microfiber 16 µm P10 Resin impregnated paper 10 µm A25 Inorganic microfiber 25 µm P25 Resin impregnated paper 25 µm						
Seals V FPM						
	Filter element Δp N 20 bar	Execution P01 MP Filtri standard Pxx Customized				

ACCESSORIES

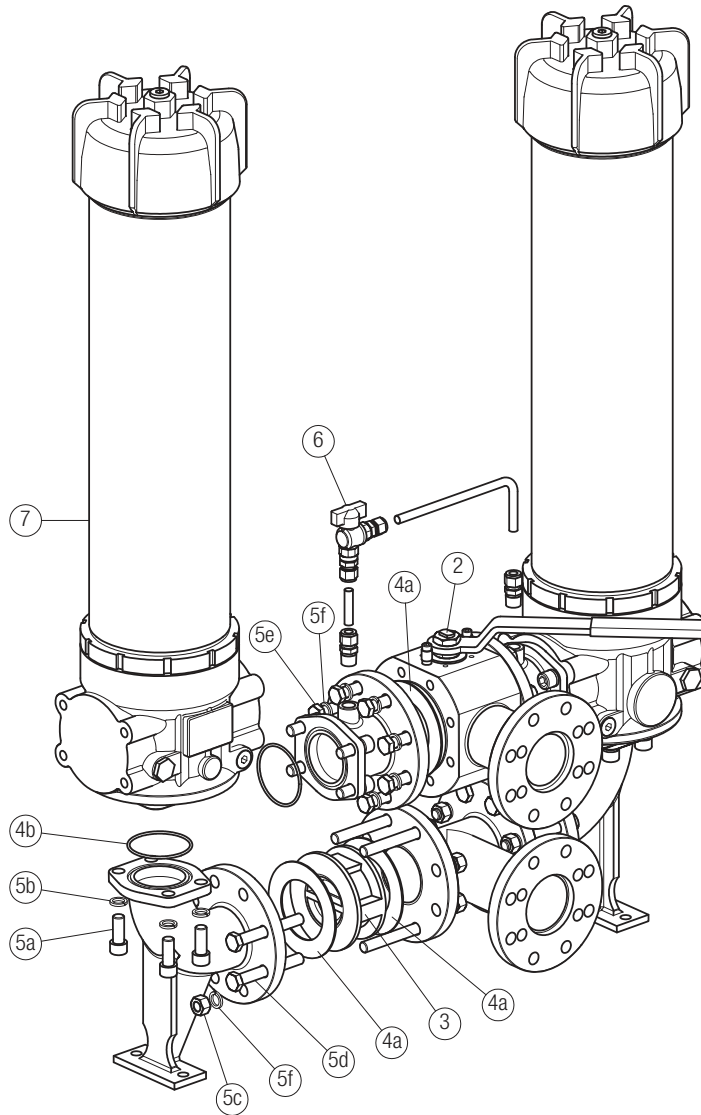
Differential indicators	page		page
DEA Electrical differential indicator	417	DTA Electronic differential indicator	420
DEM Electrical differential indicator	417-418	DVA Visual differential indicator	420
DLA Electrical / visual differential indicator	418-419	DVM Visual differential indicator	420
DLE Electrical / visual differential indicator	419		
Additional features	page		
T2 Plug	421		



LMD951 SPARE PARTS

Order number for spare parts

LMD 951



Item 7:
for complete filter code and
spare parts, see
LMP 950 - 951 series chapter

Quantity:
- filter spare parts: 2 pcs.
- filter seal kit: 2 pcs.

Item:	Q.ty: 1 pc. 2		Q.ty: 2 pcs. 3	Q.ty: 1 pc. 4	Q.ty: 1 pc. 5 (5a ÷ 5f)	Q.ty: 1 pc. 6	Q.ty: 2 pcs. 7
Filter series LMD 951	3-way ball valve PN 16		One-way valve	Seal Kit	Threaded fasteners kit	G 1/2" Ball Valve Kit with straight fittings	Filter
F1 - F2 - F5 - F6 / D1 - D3 (3" SAE / DIN PN16 DN 80)	3" SAE 3000 psi/M 02001135	3" SAE 3000 psi/UNC 02001438	02001418	02050388	02049056	02025043	LMP9513xxF1/3xxxNPOx
F3 - F4 - F7 - F8 / D2 - D4 (4" SAE / DIN PN16 DN 100)	4" SAE 3000 psi/M 02001162	4" SAE 3000 psi/UNC 02001439	02001419	02050389	02049057		