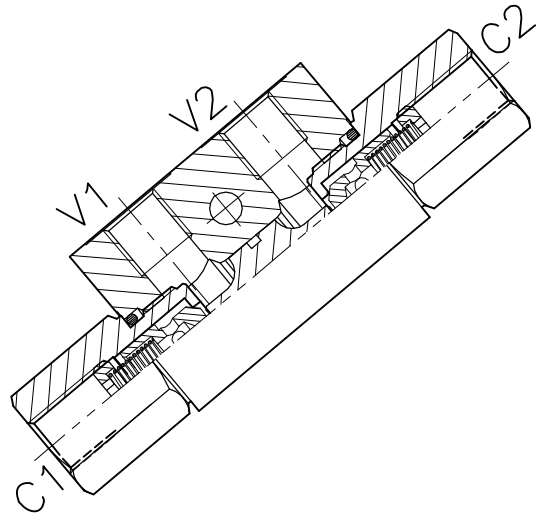
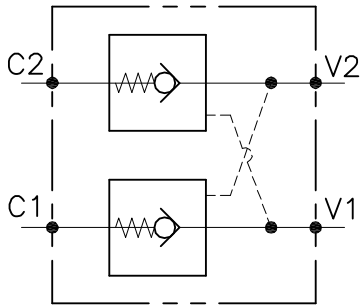


# A-VNR-SO-DE-...-L-...

VALVOLA DI BLOCCO A DOPPIO EFFETTO PILOTATA  
DOUBLE PILOT CHECK VALVE, POPPET TYPE

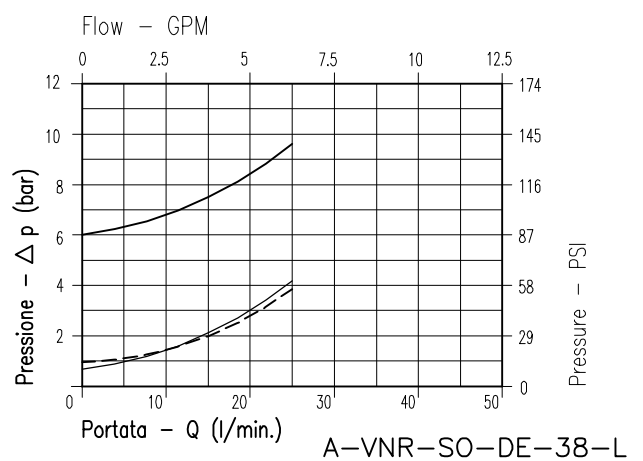
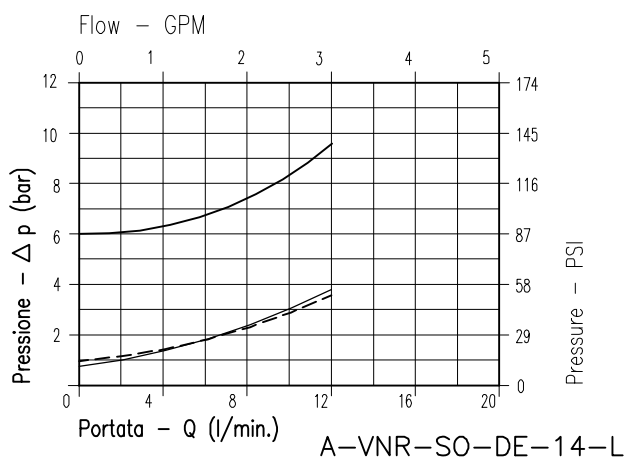


## CARATTERISTICHE

Luce nominale min/max	<b>Vedi pag. 14</b>
Portata min/max	<b>Vedi pag. 14</b>
Pressione di lavoro max.	<b>350 bar - 5075 PSI</b>
Rapporto di pilotaggio	<b>4 : 1</b>
Temperatura ambiente	<b>-30°C + 50°C</b>
Temperatura olio	<b>-30°C + 80°C</b>
Filtraggio consigliato	<b>30÷50 micron</b>
Peso	<b>0.645 Kg. 1/4" GAS</b>
Peso	<b>0.657 Kg. 3/8" GAS</b>

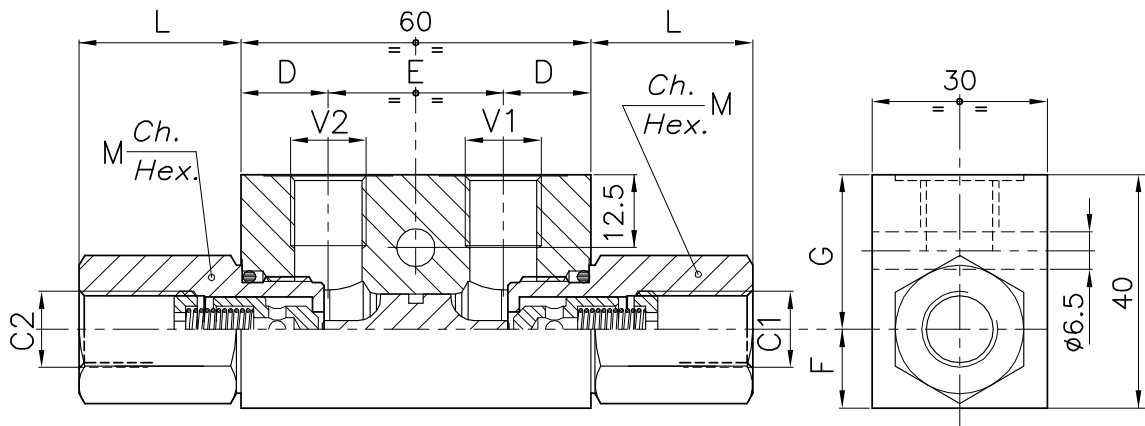
## PERFORMANCE

Min/max rated size
Min/max flow-rate
Max working pressure
Pilot ratio
Room temperature
Oil temperature
Recommended filtration
Weight
Weight

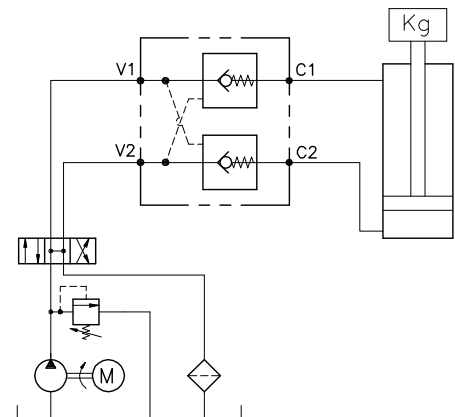


- 8Bar Flusso libero (free flow)
- - - - - 1Bar Flusso libero (free flow)
- Flusso pilotato (piloted flow)

**Viscosità olio 46 cSt a 50°C**  
**Oil viscosity 46 cSt at 50°C**



### ESEMPIO TIPICO DI CIRCUITO TYPICAL CIRCUIT EXAMPLE



### DIMENSIONI DIMENSIONS

NUMERO VALVOLA VALVE NUMBER	D	E	F	G	L	M	Attacchi Port size V2-C2 V1-C1 GAS (BSPP)	Luce nominale Rated size DN	Portata max Max flow-rate l/min - GPM
254	15	30	13.5	26.5	28	22	1/4"	4	16-4.2
258	14	32	14.5	25.5	30	24	3/8"	6	35-9.2
360	14	32	14.5	25.5	31.5	24	3/8"	6	35-9.2

### CODICE DI ORDINAZIONE HOW TO ORDER

003      254      0      J      0

Numero valvola / Valve number

254

258

360

Omettere nella sigla valvola  
Do not use in valve code

- A O-RING sul pist. di pilotaggio  
Pilot piston O-RING
- O Senza O-RING sul pist. di pilotaggio  
No pilot piston O-RING

Inizio apertura  
Cracking pressure

- J 1 bar  
Molla (colore nero)  
Spring (black)
- W 6÷8 bar  
Molla (colore giallo)  
Spring (yellow)