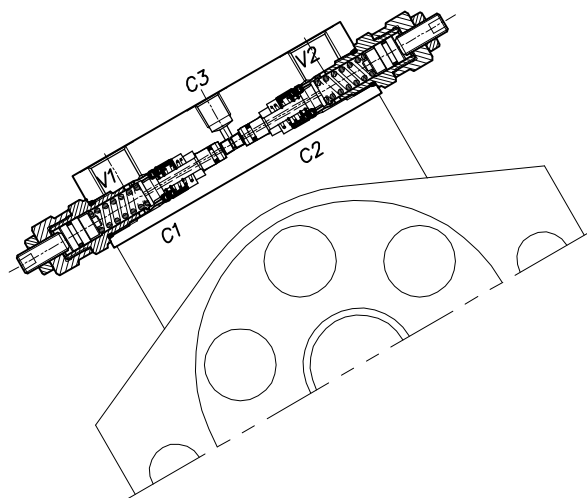
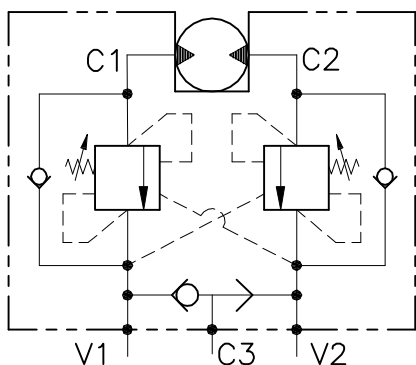


A-WB-C-DE-VFF-FM-12-14

VALVOLA BILANCIAMENTO, BLOCCO E CONTROLLO MOVIMENTO
A DOPPIO EFFETTO FLANGIATA MOTORE

SINGLE COUNTERBALANCE MOTOR FLANGEABLE VALVE



CARATTERISTICHE

Luce nominale	DN 10
Portata min/max	1/60 l/min - 0.26/15.9 GPM
Pressione di lavoro max.	350 bar - 5075 PSI
Pressione max. di taratura	220 bar - 3190 PSI
Rapporto di pilotaggio	4.25 : 1
Temperatura ambiente	-30°C + 50°C
Temperatura olio	-30°C + 80°C
Filtraggio consigliato	30 micron
Coppia di serraggio	
Peso	

PERFORMANCE

Rated size
Min/max flow-rate
Max working pressure
Max setting pressure
Pilot ratio
Room temperature
Oil temperature
Recommended filtration
Tightening torque
Weight

NOTE:

La taratura deve essere **1.3** volte maggiore della pressione indotta dal carico.

Valve should be set at **1.3** times load induced pressure.

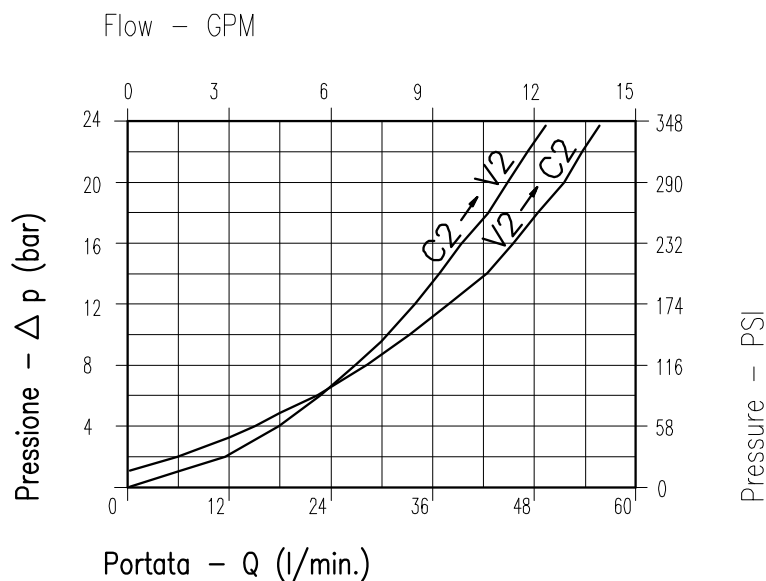
Fornitura standard valvola: corpo acciaio
Steel body ad standard

ESEMPIO/EXAMPLE:

Pressione di lavoro max:

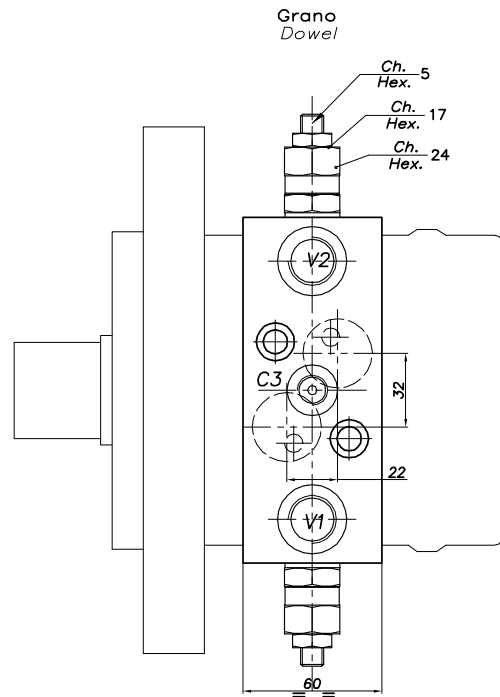
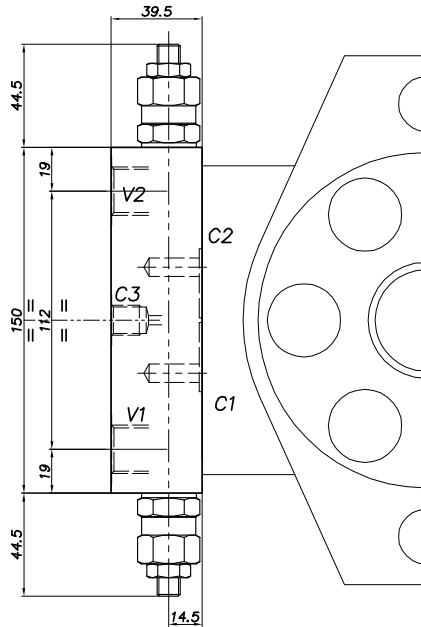
Max working pressure:

350 bar / 1.3 = 270 bar



Viscosità olio 46 cSt a 50°C
Oil viscosity 46 cSt at 50°C

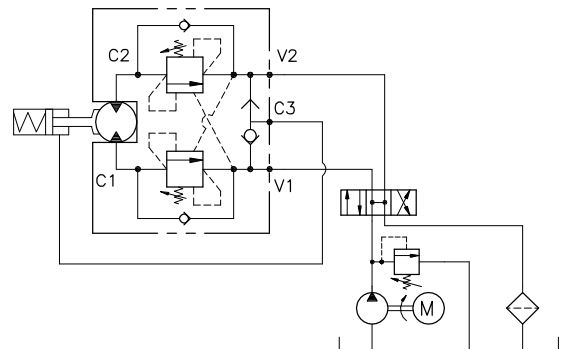
REGOLAZIONE
ADJUSTMENT →



DIMENSIONI DIMENSIONS

ESEMPIO TIPICO DI CIRCUITO TYPICAL CIRCUIT EXAMPLE

Campo taratura Setting range	Attacchi Port size V1-V2	Attacchi Port size C3	Tipo motore Motor type	Portata max Max flow-rate l/min - GPM
101	GAS (BSPP) 1/2"	GAS (BSPP) 1/4"	Samhydraulik HPR Danfoss OMS	60-15



CODICE DI ORDINAZIONE HOW TO ORDER

010 450 101

Campo taratura / Setting range

101

Campo taratura 30÷220 bar
(molla colore verde)

Setting range 30÷220 bar
(green spring)

Taratura standard
(Q=5 l/1')

Std. bar setting
(Q=5 l/1')

220 bar

Incr. press. -
bar giro/vite

Pressure rise -
turn of screw

(56)