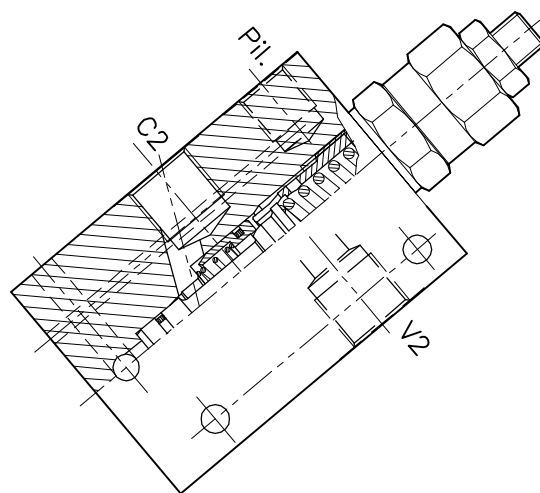
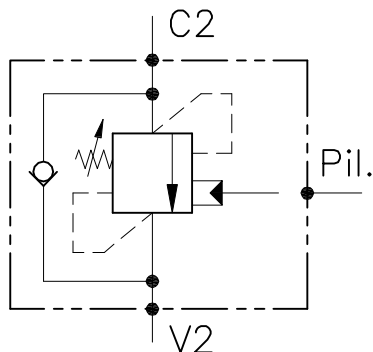


A-WB-C-SE-38-14-PA-...-...

VALVOLA BILANCIAMENTO, BLOCCO E CONTROLLO
MOVIMENTO CON PILOTAGGIO ESTERNO

COUNTERBALANCE VALVE WITH EXTERNAL PILOT



CARATTERISTICHE

Luce nominale	DN 8
Portata min/max	1/60 l/min - 0.26/15.9 GPM
Pressione max. di picco	450 bar - 6525 PSI
Pressione max. di taratura	350 bar - 5075 PSI
Rapporto di pilotaggio	4.25 : 1
Temperatura ambiente	-30°C + 50°C
Temperatura olio	-30°C + 80°C
Filtraggio consigliato	30 micron
Coppia di serraggio	
Peso	

PERFORMANCE

Rated size
Min/max flow-rate
Max peak pressure
Max setting pressure
Pilot ratio
Room temperature
Oil temperature
Recommended filtration
Tightening torque
Weight

NOTE:

La taratura deve essere **1.3** volte maggiore della pressione indotta dal carico.

Valve should be set at **1.3** times load induced pressure.

ESEMPIO/EXAMPLE:

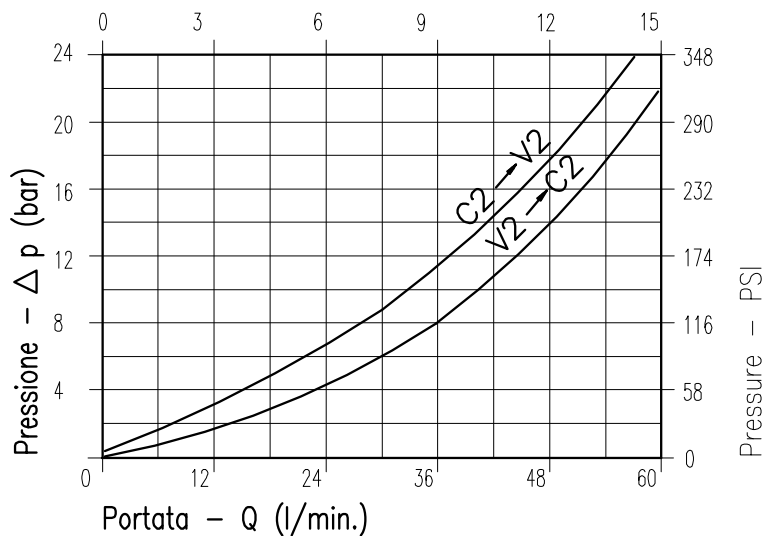
Pressione di lavoro max:

Max working pressure:

350 bar / 1.3 = 270 bar

Fornitura standard valvola: corpo in acciaio.
A richiesta corpo in alluminio.

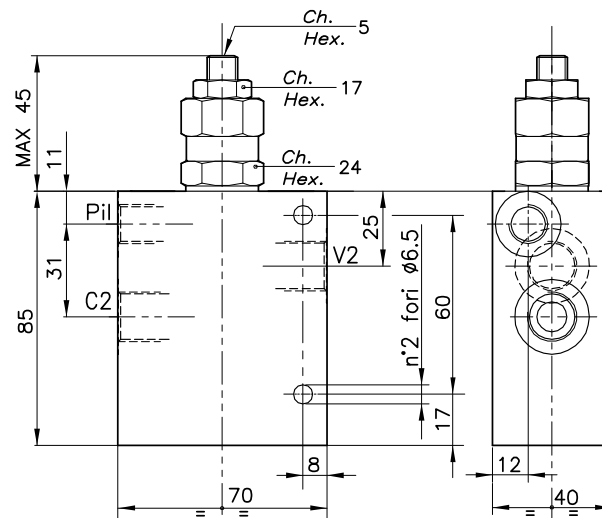
Steel body valves as standard, aluminium body on request



Viscosità olio 46 cSt a 50°C
Oil viscosity 46 cSt at 50°C

REGOLAZIONE
ADJUSTMENT →

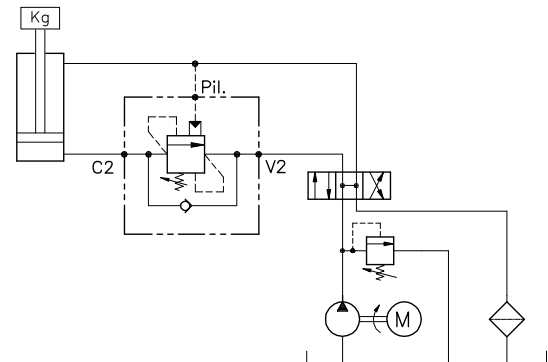
Grano
Dowel



DIMENSIONI DIMENSIONS

ESEMPIO TIPICO DI CIRCUITO TYPICAL CIRCUIT EXAMPLE

Campo taratura Setting range	Attacchi Port size V2-C2 GAS (BSPP)	Attacchi Port size PIL GAS (BSPP)	Luce nominale Rated size DN	Portata max Max flow-rate l/min - GPM
103	3/8"	1/4"	8	60-15



CODICE DI ORDINAZIONE HOW TO ORDER

010 272 103

Campo taratura / Setting range

103

Campo taratura 60÷350 bar (molla colore giallo)

Setting range 60÷350 bar (yellow spring)

Taratura standard (Q=5 l/1')
Std. bar setting (Q=5 l/1')
350 bar

Incr. press. - bar giro/vite
Pressure rise - turn of screw
(138)