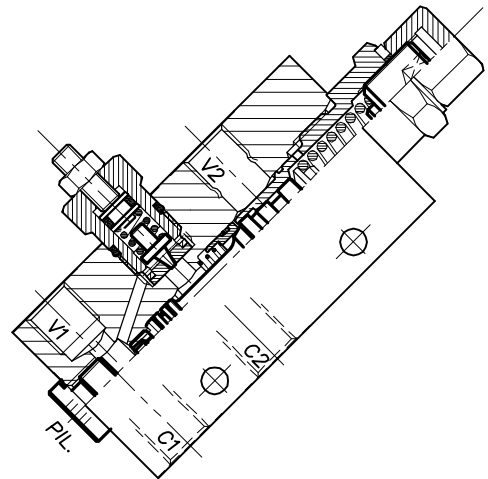
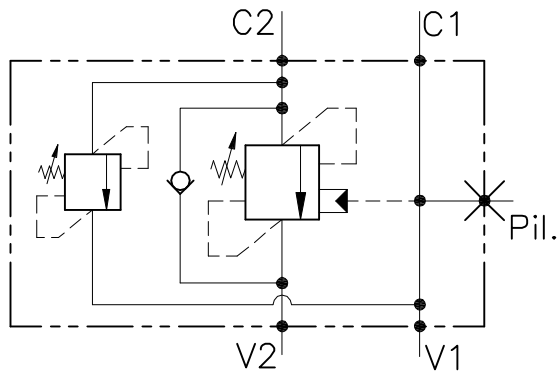


OWC-30-SE-VMP-14-L-PS

VALVOLA BILANCIAMENTO, BLOCCO E CONTROLLO MOVIMENTO, CON LIMITATRICE E COLLETTORE IN LINEA

COUNTERBALANCE VALVE WITH RELIEF VALVE AND IN LINE BODY



CARATTERISTICHE

Luce nominale	DN 6
Portata min/max	1/25 l/min - 0.26/6.6 GPM
Pressione max. di picco	450 bar - 6525 PSI
Pressione max. di taratura	350 bar - 5075 PSI
Rapporto di pilotaggio	4 : 1
Temperatura ambiente	-30°C + 50°C
Temperatura olio	-30°C + 80°C
Filtraggio consigliato	30 micron
Coppia di serraggio	
Peso	0.300 Kg

PERFORMANCE

Rated size
Min/max flow-rate
Max peak pressure
Max setting pressure
Pilot ratio
Room temperature
Oil temperature
Recommended filtration
Tightening torque
Weight

NOTE:

La taratura deve essere **1.3** volte maggiore della pressione indotta dal carico.

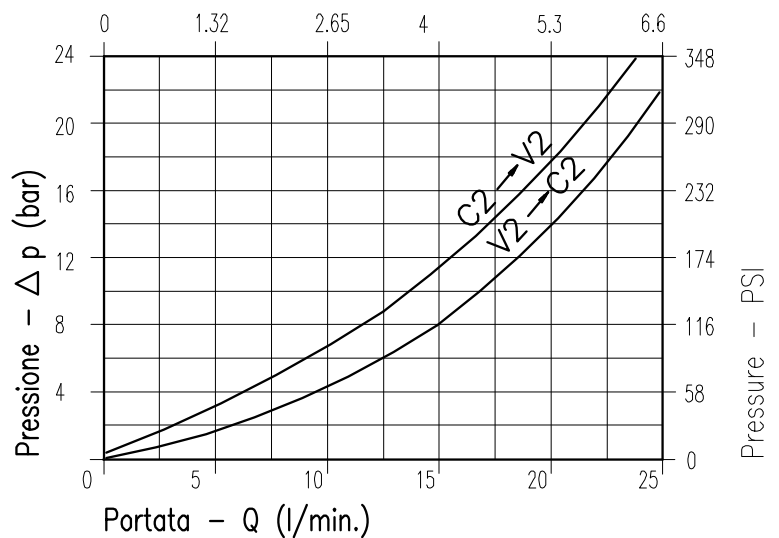
Valve should be set at **1.3** times load induced pressure.

ESEMPIO/EXAMPLE:

Pressione di lavoro max:

Max working pressure:

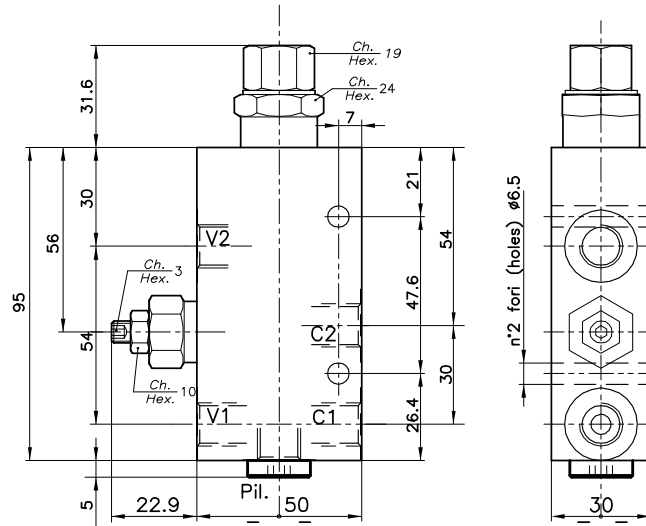
350 bar / 1.3 = 270 bar



Viscosità olio 46 cSt a 50°C
Oil viscosity 46 cSt at 50°C

REGOLAZIONE
ADJUSTMENT →

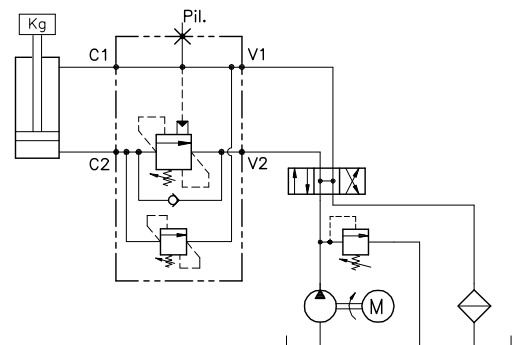
Grano
Dowel
(X)



DIMENSIONI DIMENSIONS

ESEMPIO TIPICO DI CIRCUITO TYPICAL CIRCUIT EXAMPLE

Campo taratura Setting range	Attacchi Port size V2-C2 V1-C1-PIL GAS (BSPP)	Luce nominale Rated size DN	Portata max Max flow-rate l/min - GPM
705	1/4"	6	25-6



CODICE DI ORDINAZIONE HOW TO ORDER

010 427 705

Campo taratura / Setting range

705

Campo taratura 60÷350 bar (molla colore verde)

Setting range 60÷350 bar (green spring)

Taratura standard (Q=5 l/1')
Std. bar setting (Q=5 l/1')
350 bar

Incr. press. - bar giro/vite
Pressure rise - turn of screw
(138)