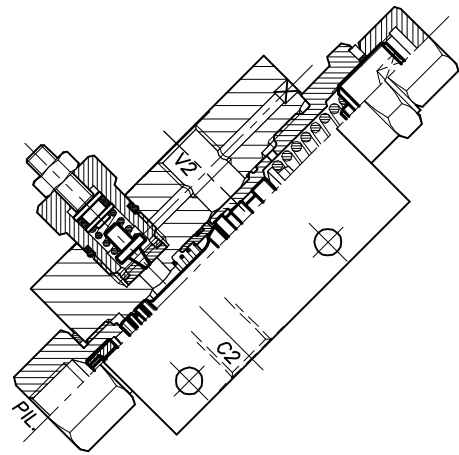
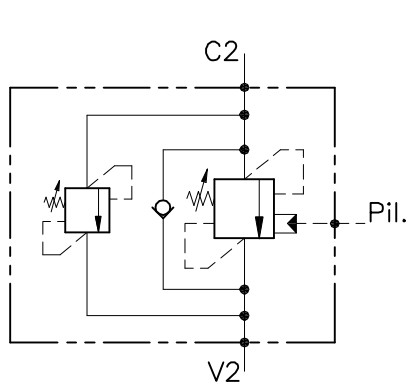


# OWC-30-SE-VMP-14

VALVOLA BILANCIAMENTO, BLOCCO E CONTROLLO MOVIMENTO, CON LIMITATRICE E PILOTAGGIO ESTERNO

COUNTERBALANCE VALVE WITH RELIEF VALVE AND EXTERNAL PILOT



## CARATTERISTICHE

Luce nominale	<b>DN 6</b>
Portata min/max	<b>1/25 l/min - 0.26/6.6 GPM</b>
Pressione max. di picco	<b>450 bar - 6525 PSI</b>
Pressione max. di taratura	<b>350 bar - 5075 PSI</b>
Rapporto di pilotaggio	<b>4 : 1</b>
Temperatura ambiente	<b>-30°C + 50°C</b>
Temperatura olio	<b>-30°C + 80°C</b>
Filtraggio consigliato	<b>30 micron</b>
Coppia di serraggio	
Peso	<b>0.300 Kg</b>

## PERFORMANCE

Rated size
Min/max flow-rate
Max peak pressure
Max setting pressure
Pilot ratio
Room temperature
Oil temperature
Recommended filtration
Tightening torque
Weight

### NOTE:

La taratura deve essere **1.3** volte maggiore della pressione indotta dal carico.

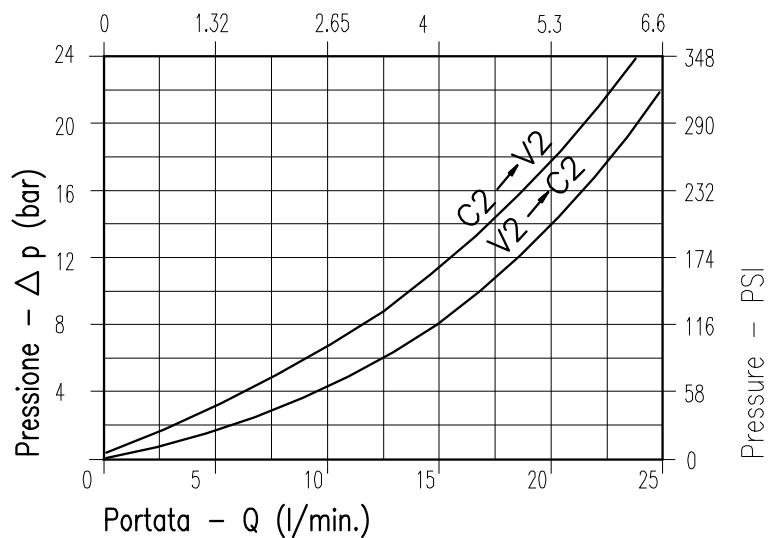
Valve should be set at **1.3** times load induced pressure.

### ESEMPIO/EXAMPLE:

Pressione di lavoro max:

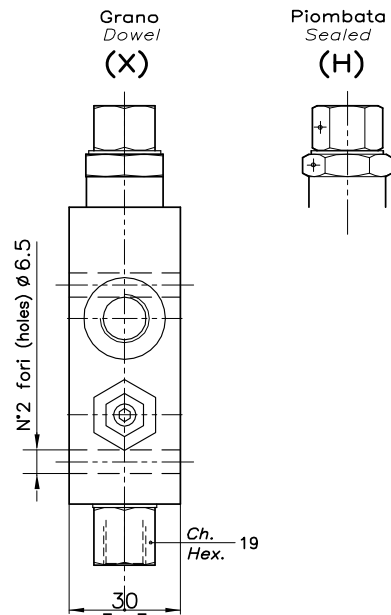
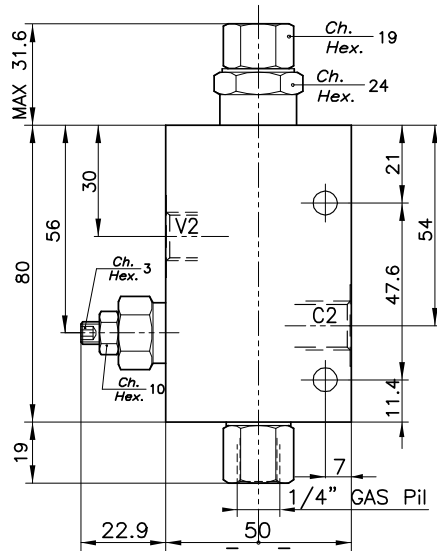
Max working pressure:

**350 bar / 1.3 = 270 bar**



Viscosità olio 46 cSt a 50°C  
Oil viscosity 46 cSt at 50°C

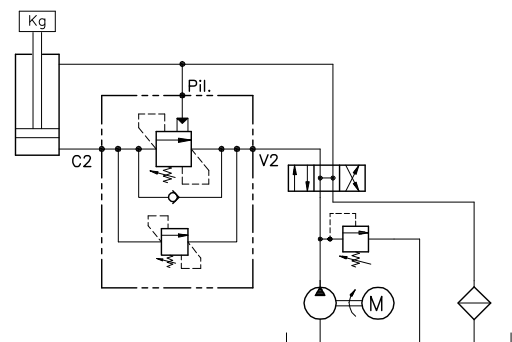
REGOLAZIONE  
ADJUSTMENT



## DIMENSIONI DIMENSIONS

Campo taratura Setting range	Attacchi Port size V2-C2 GAS (BSPP)	Luce nominale Rated size DN	Portata max Max flow-rate l/min - GPM
624	1/4"	6	25-6

## ESEMPIO TIPICO DI CIRCUITO TYPICAL CIRCUIT EXAMPLE



## CODICE DI ORDINAZIONE HOW TO ORDER

001 624 A X 0

Campo taratura / Setting range

624

Campo taratura 30÷280 bar (molla colore verde)  
Setting range 30÷280 bar (green spring)

Taratura standard (Q=5 l/1')  
Std. bar setting (Q=5 l/1')  
250 bar

Incr. press. - bar giro/vite  
Pressure rise - turn of screw  
(65)

Fori di pilotaggio  
Pilot holes

A Ø 0.5  
B Ø 0.7  
C Ø 0.9

Regolazione  
Adjustment

X Grano - Dowel  
H Piombata - Sealed