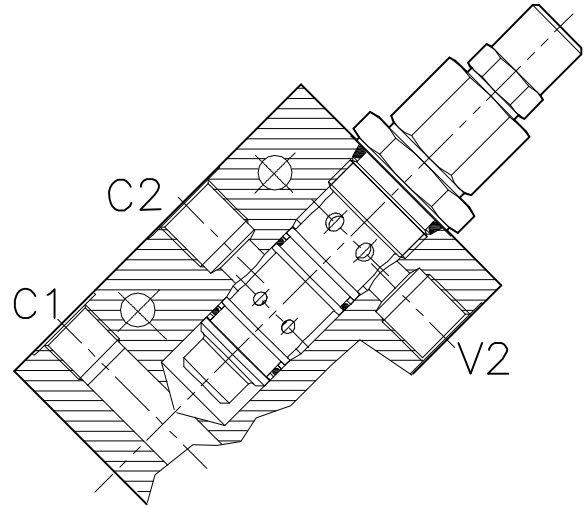
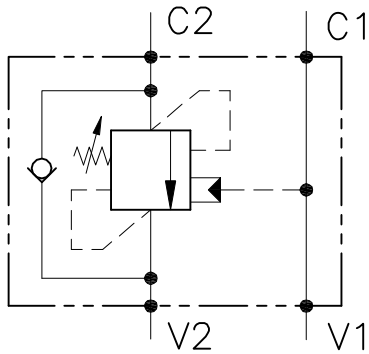


OWC-C-SE-...-L-...-...

VALVOLA BILANCIAMENTO, BLOCCO E CONTROLLO MOVIMENTO
A CARTUCCIA, CON COLLETTORE IN LINEA

CARTRIDGE STYLE COUNTERBALANCE VALVE WITH IN LINE BODY



CARATTERISTICHE

| | |
|---------------------------------|-----------------------------------|
| Luce nominale | DN 10 |
| Portata min/max | 1/60 l/min - 0.26/15.9 GPM |
| Pressione max. di picco | 450 bar - 6525 PSI |
| Pressione max. di taratura | 350 bar - 5075 PSI |
| Rapporto di pilotaggio standard | 4.25 : 1 |
| Temperatura ambiente | -30°C + 50°C |
| Temperatura olio | -30°C + 80°C |
| Filtraggio consigliato | 30 micron |
| Coppia di serraggio | |
| Peso | |

PERFORMANCE

| |
|------------------------|
| Rated size |
| Min/max flow-rate |
| Max peak pressure |
| Max setting pressure |
| Standard pilot ratio |
| Room temperature |
| Oil temperature |
| Recommended filtration |
| Tightening torque |
| Weight |

NOTE:

La taratura deve essere **1.3** volte maggiore della pressione indotta dal carico.

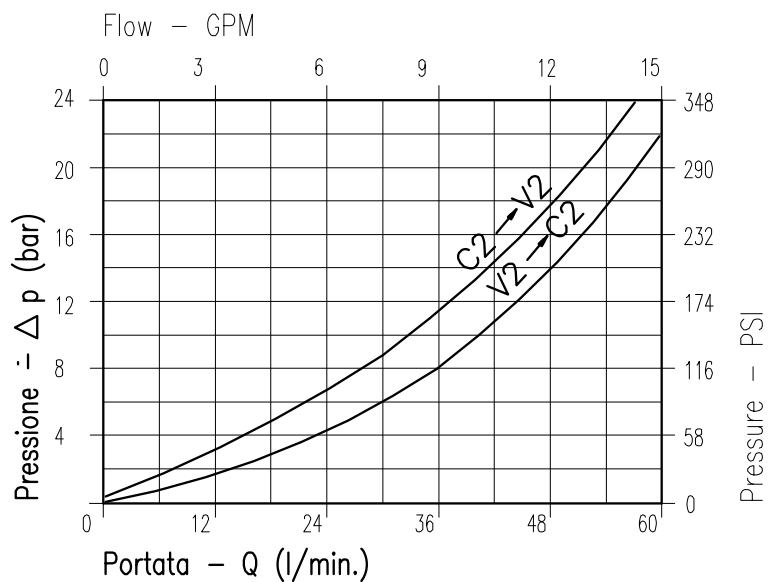
Valve should be set at **1.3** times load induced pressure.

ESEMPIO/EXAMPLE:

Pressione di lavoro max:

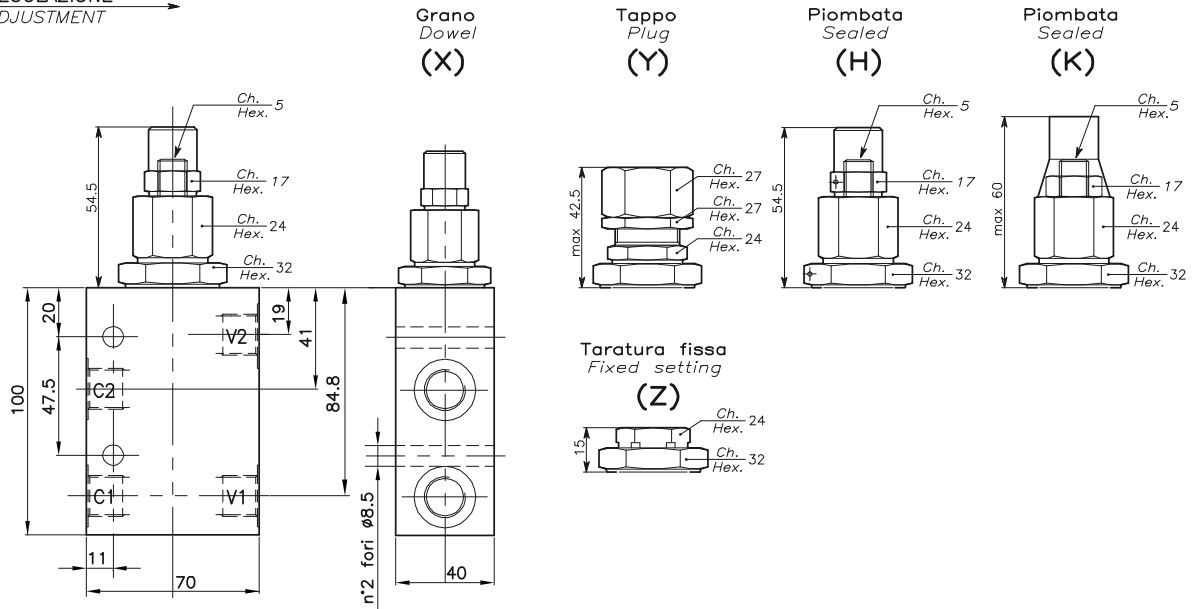
Max working pressure:

350 bar / 1.3 = 270 bar



Viscosità olio 46 cSt a 50°C
Oil viscosity 46 cSt at 50°C

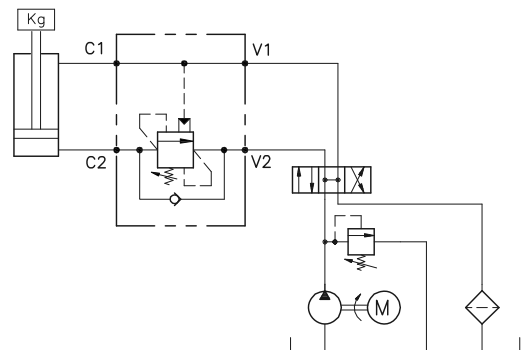
REGOLAZIONE
ADJUSTMENT →



**DIMENSIONI
DIMENSIONS**

| Campo taratura Setting range | Attacchi Port size V2-C2 V1-C1 GAS (BSPP) | Luce nominale Rated size DN | Portata max Max flow-rate l/min - GPM |
|---------------------------------|---|-----------------------------------|---|
| 661 | 1/2" | 10 | 60-15 |

**ESEMPIO TIPICO DI CIRCUITO
TYPICAL CIRCUIT EXAMPLE**



**CODICE DI ORDINAZIONE
HOW TO ORDER**

001 661 0 X 0

| Campo taratura / Setting range | Rapporto di pilotaggio Pilot ratios | Regolazione Adjustment |
|---|--|------------------------------------|
| 661 | O 4.25 : 1 | X Grano - Dowel |
| Campo taratura 60÷350 bar (molla colore giallo) Setting range 60÷350 bar (yellow spring) | D 8 : 1 | Y Tappo - Plug |
| Taratura standard (Q=5 l/1') Std. bar setting (Q=5 l/1') | | Z Taratura fissa - Fixed setting |
| 350 bar | | H Piombata - Sealed |
| Incr. press. - bar giro/vite Pressure rise - turn of screw (138) | | K Piombata - Sealed |