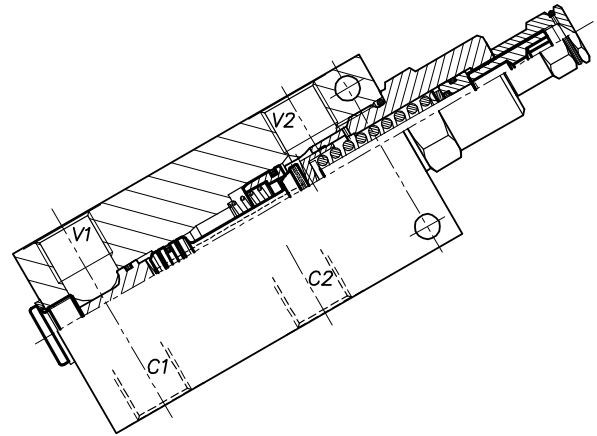
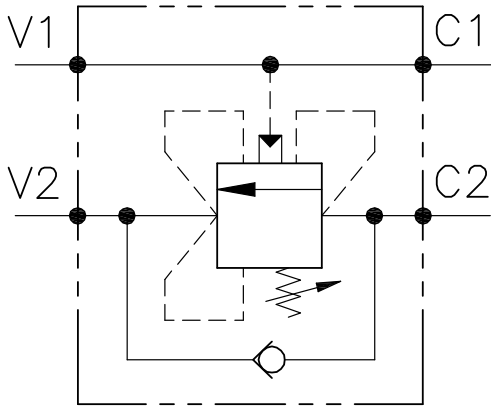


OWC-SE-100-CC-12-R8.5-...

VALVOLA BILANCIAMENTO, BLOCCO E CONTROLLO MOVIMENTO PER CENTRO CHIUSO CON COLLETTORE IN LINEA
COUNTERBALANCE VALVE FOR CLOSED CENTRE SPOOL WITH IN LINE BODY



CARATTERISTICHE

Luce nominale	DN 10
Portata min/max	1/80 l/min - 0.26/21 GPM
Pressione max. di taratura	350 bar - 5075 PSI
Rapporto di pilotaggio	8.5 : 1
Temperatura ambiente	-30°C + 50°C
Temperatura olio	-30°C + 80°C
Filtraggio consigliato	30÷50 micron
Coppia di serraggio	
Peso	

PERFORMANCE

Rated size
Min/max flow-rate
Max setting pressure
Pilot ratio
Room temperature
Oil temperature
Recommended filtration
Tightening torque
Weight

NOTE:

La taratura deve essere **1.3** volte maggiore della pressione indotta dal carico.

Valve should be set at **1.3** times load induced pressure.

ESEMPIO/EXAMPLE:

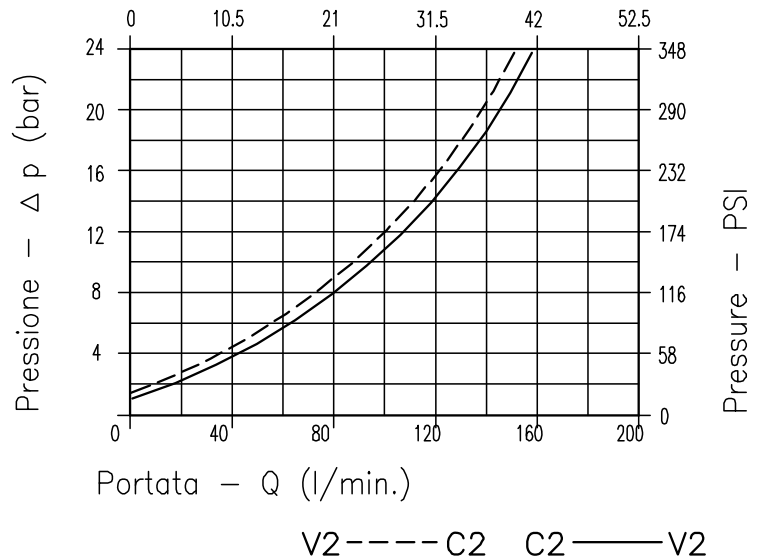
Pressione di lavoro max:

Max working pressure:

350 bar / 1.3 = 270 bar

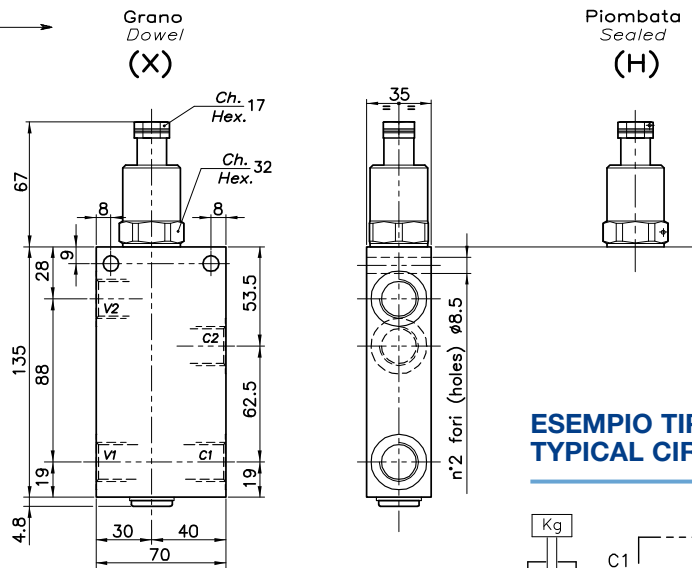
Fornitura standard valvola: corpo in acciaio.
A richiesta corpo in alluminio.

Steel body valves as standard, aluminium body on request

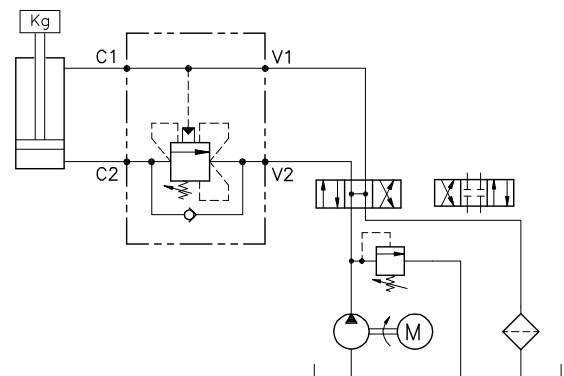


Viscosità olio 46 cSt a 50°C
Oil viscosity 46 cSt at 50°C

REGOLAZIONE
ADJUSTMENT →



ESEMPIO TIPICO DI CIRCUITO TYPICAL CIRCUIT EXAMPLE



DIMENSIONI DIMENSIONS

Campo taratura Setting range	Attacchi Port size V2-C2 V1-C1 GAS (BSPP)	Luce nominale Rated size DN	Portata max Max flow-rate l/min - GPM
602	1/2"	10	150-38

CODICE DI ORDINAZIONE HOW TO ORDER

001 602 0 X 0

Campo taratura / Setting range	
602	
Campo taratura 60÷350 bar (molla colore giallo) Setting range 60÷350 bar (yellow spring)	
Taratura standard (Q=5 l/1') Std. bar setting (Q=5 l/1') 220 bar	Incr. press. - bar giro/vite Pressure rise - turn of screw (138)

Rapporto di pilotaggio
Pilot ratios
0 | 8,5 : 1

Regolazione
Adjustment
X | Grano - Dowel
H | Piombata - Sealed