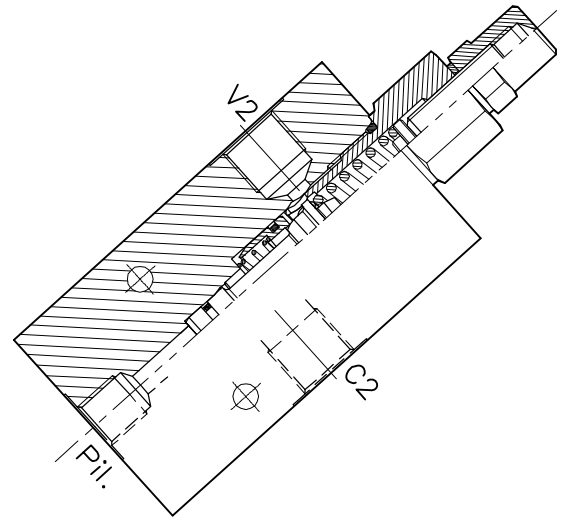
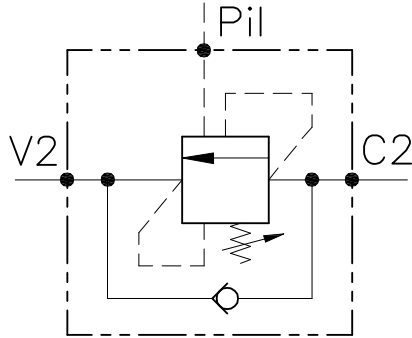


# OWC-SE-...-14-...

VALVOLA BILANCIAMENTO, BLOCCO E CONTROLLO MOVIMENTO CON PILOTAGGIO ESTERNO

COUNTERBALANCE VALVE WITH EXTERNAL PILOT



## CARATTERISTICHE

Luce nominale min/max	<b>DN 6/8/10</b>
Portata min/max	<b>1/60 l/min - 0.26/15.9 GPM</b>
Pressione max. di picco	<b>450 bar - 6525 PSI</b>
Pressione max. di taratura	<b>350 bar - 5075 PSI</b>
Rapporto di pilotaggio standard	<b>4.25 : 1</b>
Temperatura ambiente	<b>-30°C + 50°C</b>
Temperatura olio	<b>-30°C + 80°C</b>
Filtraggio consigliato	<b>30 micron</b>
Coppia di serraggio	
Peso	

## PERFORMANCE

Min/max rated size
Min/max flow-rate
Max peak pressure
Max setting pressure
Standard pilot ratio
Room temperature
Oil temperature
Recommended filtration
Tightening torque
Weight

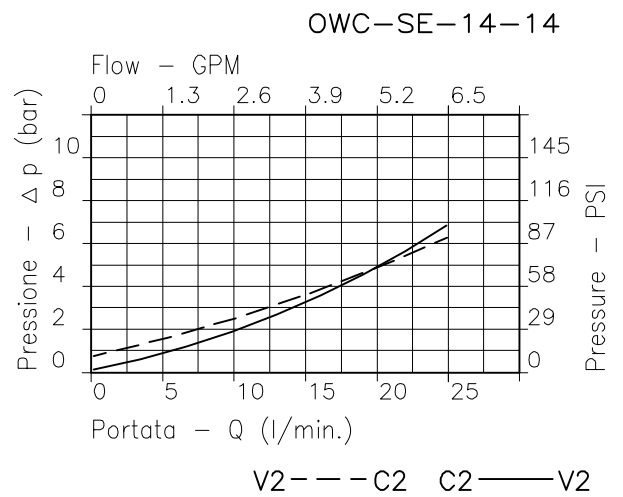
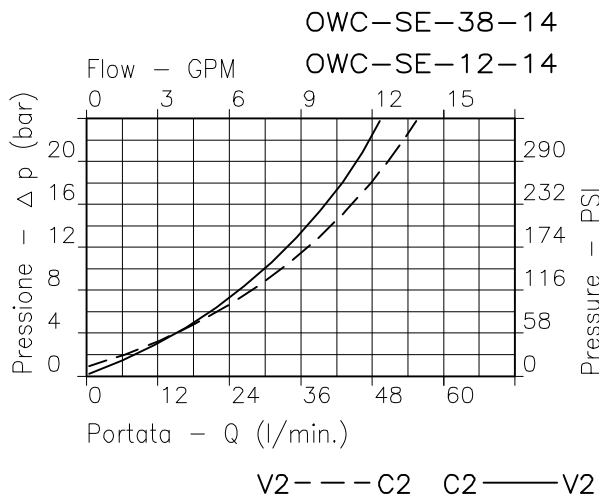
### NOTE:

La taratura deve essere **1.3** volte maggiore della pressione indotta dal carico.

Valve should be set at **1.3** times load induced pressure.

### ESEMPIO/EXAMPLE:

Pressione di lavoro max **350 bar / 1.3 = 270 bar** Max working pressure



Viscosità olio 46 cSt a 50°C - Oil viscosity 46 cSt at 50°C

