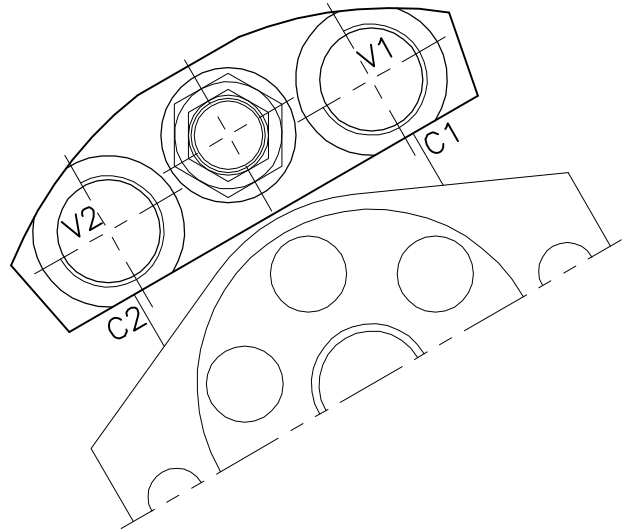
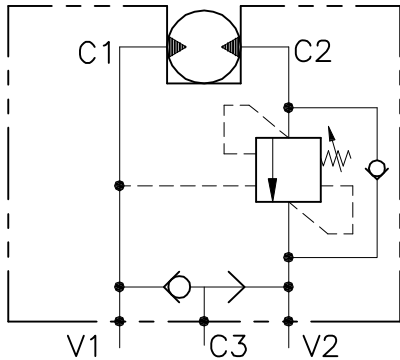


OWC-SE-34-FMD-A-...

VALVOLA BILANCIAMENTO, BLOCCO E CONTROLLO MOVIMENTO
A SEMPLICE EFFETTO FLANGIATA MOTORE

SINGLE COUNTERBALANCE MOTOR FLANGEABLE VALVE



CARATTERISTICHE

Luce nominale	DN 14/15
Portata min/max	1/120 l/min - 0.26/31.7 GPM
Pressione di lavoro max.	350 bar - 5075 PSI
Pressione max. di taratura	350 bar - 5075 PSI
Rapporto di pilotaggio standard	6.2 : 1
Temperatura ambiente	-30°C + 50°C
Temperatura olio	-30°C + 80°C
Filtraggio consigliato	30 micron
Coppia di serraggio	
Peso	

PERFORMANCE

Rated size
Min/max flow-rate
Max working pressure
Max setting pressure
Standard pilot ratio
Room temperature
Oil temperature
Recommended filtration
Tightening torque
Weight

NOTE:

La taratura deve essere **1.3** volte maggiore della pressione indotta dal carico.

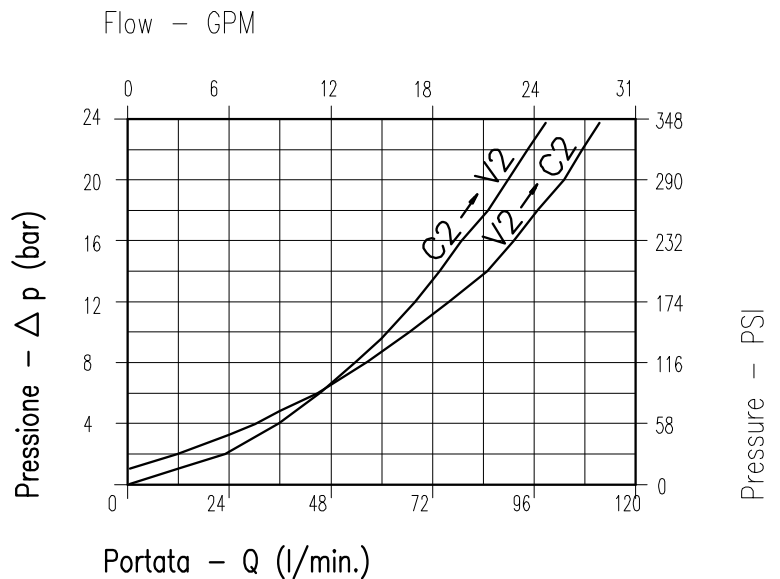
Valve should be set at **1.3** times load induced pressure.

ESEMPIO/EXAMPLE:

Pressione di lavoro max:

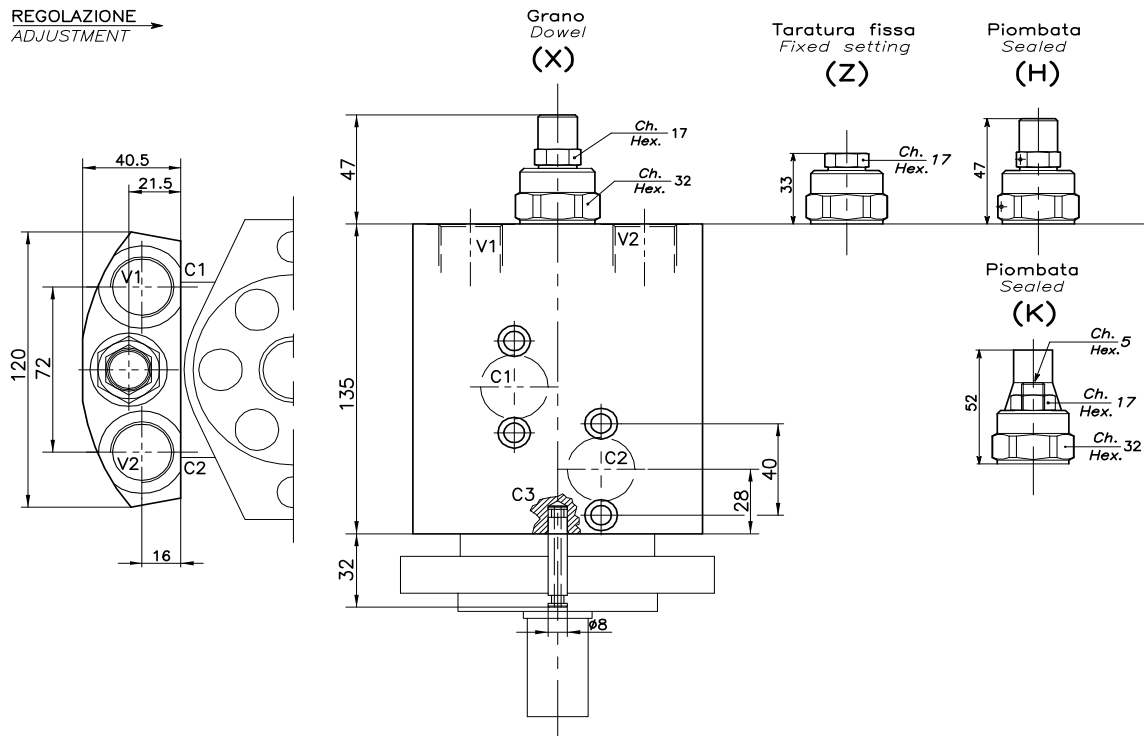
Max working pressure:

350 bar / 1.3 = 270 bar



Viscosità olio 46 cSt a 50°C
Oil viscosity 46 cSt at 50°C

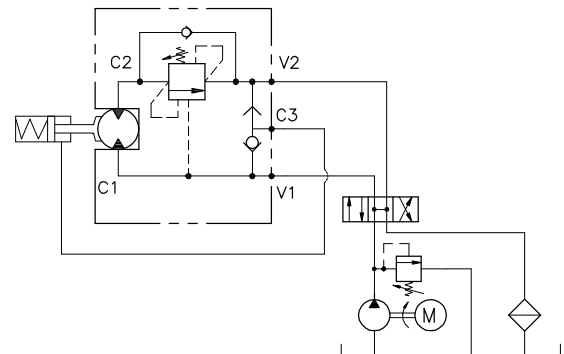
REGOLAZIONE
ADJUSTMENT →



DIMENSIONI DIMENSIONS

Campo taratura Setting range	Attacchi Port size V1-V2 GAS (BSPP)	Attacchi Port size C1-C2 GAS (BSPP)	Attacchi Port size C3 GAS (BSPP)	Tipo motore Motor type	Portata max Max flow-rate l/min - GPM
233	3/4"	ø15	ø8	Danfoss OMR-OMP (38X36)	120-31

ESEMPIO TIPICO DI CIRCUITO TYPICAL CIRCUIT EXAMPLE



CODICE DI ORDINAZIONE HOW TO ORDER

001 233 0 X 0

Campo taratura / Setting range	Rapporto di pilotaggio Pilot ratios	Regolazione Adjustment
233	O 6.2 : 1 G 4.1 : 1	X Grano - Dowel Z Taratura fissa - Fixed setting H Piombata - Sealed K Piombata - Sealed
Campo taratura 60÷350 bar (molla colore giallo) Setting range 60÷350 bar (yellow spring)		
Taratura standard (Q=5 l/1') Std. bar setting (Q=5 l/1') 350 bar		Incr. press. - bar giro/vite Pressure rise - turn of screw (138)