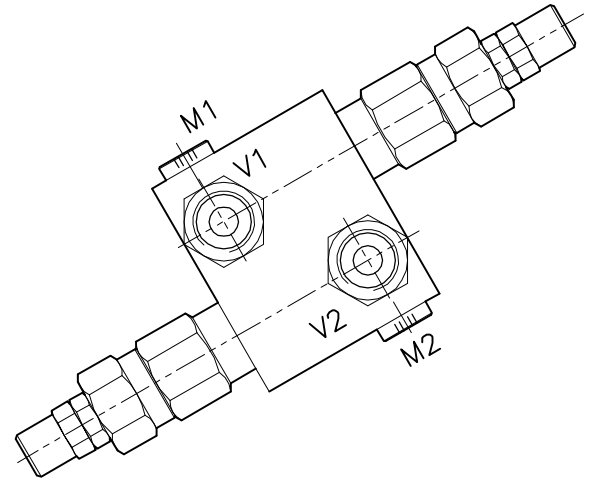
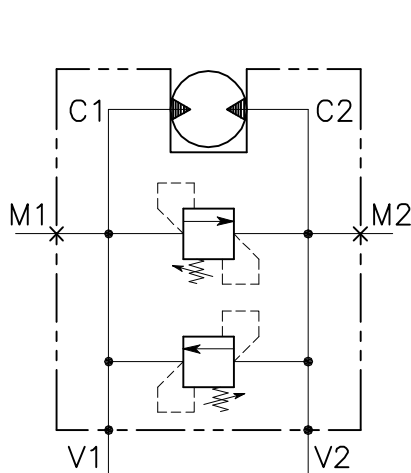


VDI-45-SN-FM...-12D

VALVOLA DI MASSIMA PRESSIONE A DOPPIO EFFETTO AD AZIONE DIRETTA CON OTTURATORE CONICO E COLLETTORE FLANGIATO

DOUBLE RELIEF VALVE, DIRECT ACTING POPPET TYPE VALVE WITH FLANGEABLE BODY

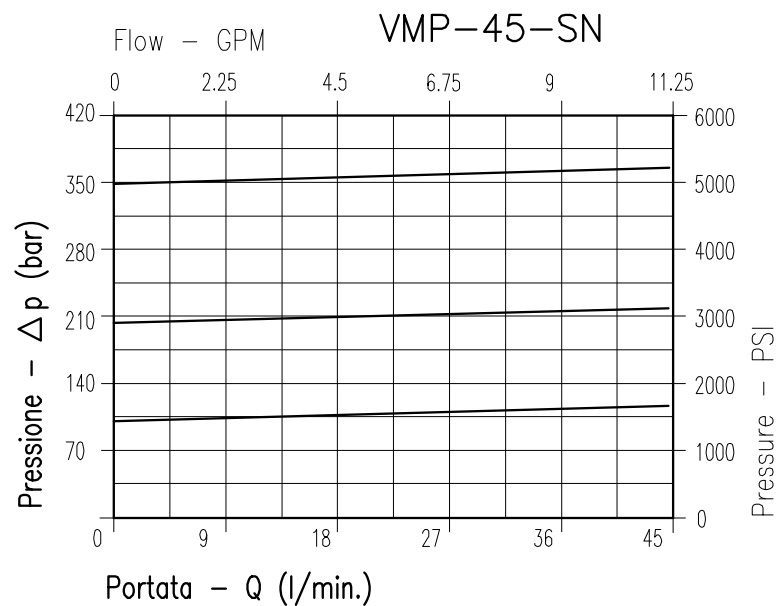


CARATTERISTICHE

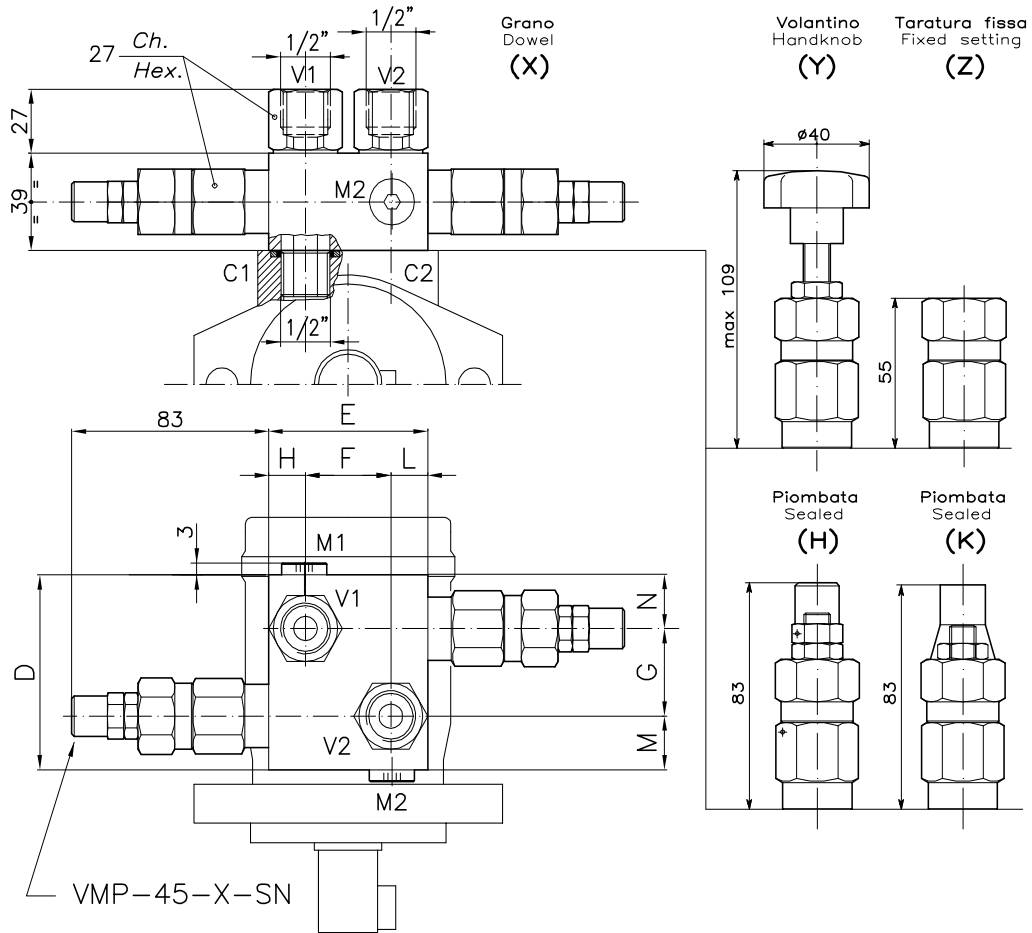
Luce nominale	DN 8
Portata min/max	1/45 l/min - 0.26/11.9 GPM
Pressione di lavoro max.	350 bar - 5075 PSI
Pressione max. di taratura	350 bar - 5075 PSI
Temperatura ambiente	-30°C + 50°C
Temperatura olio	-30°C + 80°C
Filtraggio consigliato	30 micron
Coppia di serraggio	75±85 Nm
Peso	1.454 Kg

PERFORMANCE

Rated size
Min/max flow-rate
Max working pressure
Max setting pressure
Room temperature
Oil temperature
Recommended filtration
Tightening torque
Weight



Viscosità olio 46 cSt a 50°C
Oil viscosity 46 cSt at 50°C


**DIMENSIONI
DIMENSIONS**

Campo taratura Setting range			D	E	F	G	H	L	M	N	TIPO MOTORE MOTOR TYPE	
014	023	024	80	67	36	36	15.5	15.5	22	22	DANFOSS OMP-OMR	FMOMP
015	025	026	80	62	32	22	15	15	29	29	SAMHYDRAULIK HPR/HPRC DANFOSS OMS	FMOMS

**CODICE DI ORDINAZIONE
HOW TO ORDER**

007 014 0 X 0

Campo taratura / Setting range					
014		023		024	
015		025		026	
Campo taratura 5÷100 bar (molla colore blu) Setting range 5÷100 bar (blue spring)		Campo taratura 10÷210 bar (molla colore verde) Setting range 10÷210 bar (green spring)		Campo taratura 20÷350 bar (molla colore giallo) Setting range 20÷350 bar (yellow spring)	
Taratura standard (Q=5 l/1')	Incr. press. - bar giro/vite	Taratura standard (Q=5 l/1')	Incr. press. - bar giro/vite	Taratura standard (Q=5 l/1')	Incr. press. - bar giro/vite
Std. bar setting (Q=5 l/1')	Pressure rise - turn of screw	Std. bar setting (Q=5 l/1')	Pressure rise - turn of screw	Std. bar setting (Q=5 l/1')	Pressure rise - turn of screw
80 bar	(--)	180 bar	(--)	220 bar	(--)

Regolazione Adjustment	
X	Grano - Dowel
Y	Volantino - Handknob
Z	Taratura fissa - Fixed setting
H	Piombata - Sealed
K	Piombata - Sealed