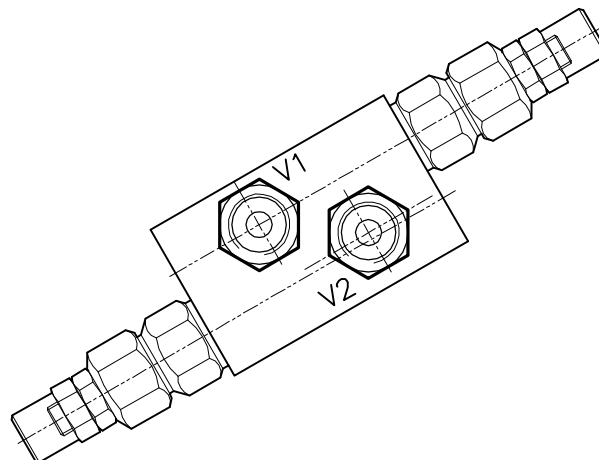
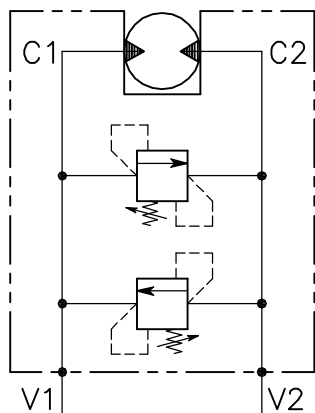


# VMP-DI-80-34-FMB-CHT-4000

VALVOLA DI MASSIMA PRESSIONE A DOPPIO EFFETTO AD AZIONE DIRETTA CON OTTURATORE CONICO E COLLETTORE FLANGIATO

DOUBLE RELIEF VALVE, DIRECT ACTING POPPET TYPE VALVE WITH FLANGEABLE BODY

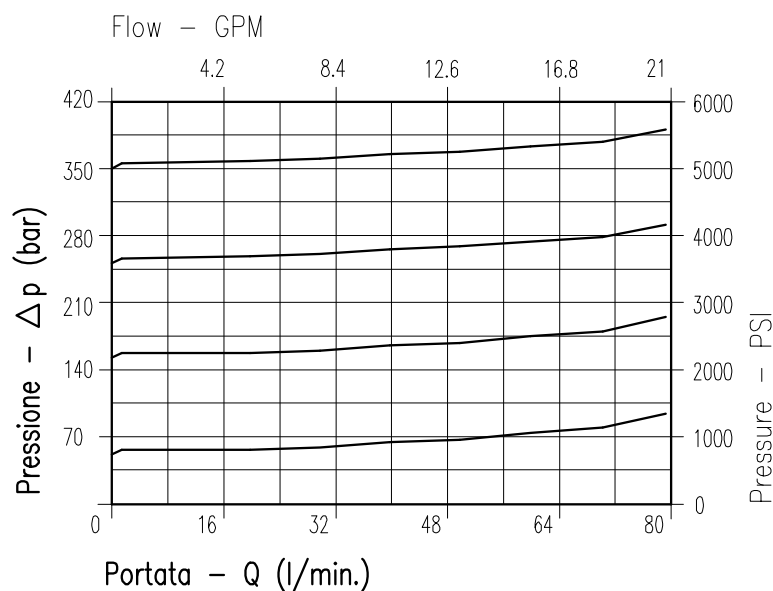


## CARATTERISTICHE

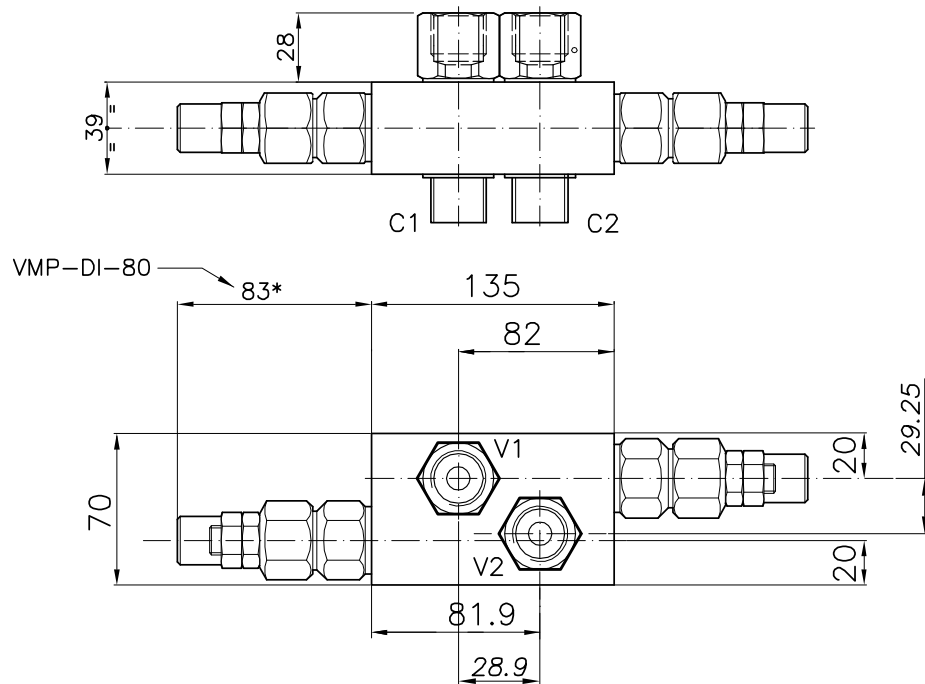
Luce nominale	<b>DN 8</b>
Portata min/max	<b>1/80 l/min - 0.2621 GPM</b>
Pressione di lavoro max.	<b>350 bar - 5075 PSI</b>
Pressione max. di taratura	<b>350 bar - 5075 PSI</b>
Temperatura ambiente	<b>-30°C + 50°C</b>
Temperatura olio	<b>-30°C + 80°C</b>
Filtraggio consigliato	<b>30 micron</b>
Coppia di serraggio	<b>95÷105 Nm</b>
Peso	<b>1.151 Kg</b>

## PERFORMANCE

Rated size
Min/max flow-rate
Max working pressure
Max setting pressure
Room temperature
Oil temperature
Recommended filtration
Tightening torque
Weight



Viscosità olio 46 cSt a 50°C  
Oil viscosity 46 cSt at 50°C



## DIMENSIONI DIMENSIONS

Campo taratura Setting range					Attacchi Port size V1-V2 C1-C2 GAS (BSPP)
186	187	188	189	190	3/4"

## CODICE DI ORDINAZIONE HOW TO ORDER

007 186 0 X 0

Campo taratura / Setting range									
186		187		188		189		190	
Campo taratura 5÷50 bar (molla colore blu) Setting range 5÷50 bar (blue spring)		Campo taratura 5÷100 bar (molla colore nero) Setting range 5÷100 bar (black spring)		Campo taratura 10÷150 bar (molla colore verde) Setting range 10÷150 bar (green spring)		Campo taratura 25÷250 bar (molla colore giallo) Setting range 25÷250 bar (yellow spring)		Campo taratura 40÷350 bar (molla colore rosso) Setting range 40÷350 bar (red spring)	
Taratura standard (Q=5 l/1')	Incr. press. - bar giro/vite	Taratura standard (Q=5 l/1')	Incr. press. - bar giro/vite	Taratura standard (Q=5 l/1')	Incr. press. - bar giro/vite	Taratura standard (Q=5 l/1')	Incr. press. - bar giro/vite	Taratura standard (Q=5 l/1')	Incr. press. - bar giro/vite
Std. bar setting (Q=5 l/1')	Pressure rise - turn of screw	Std. bar setting (Q=5 l/1')	Pressure rise - turn of screw	Std. bar setting (Q=5 l/1')	Pressure rise - turn of screw	Std. bar setting (Q=5 l/1')	Pressure rise - turn of screw	Std. bar setting (Q=5 l/1')	Pressure rise - turn of screw
40 bar	(--)	80 bar	(--)	120 bar	(--)	210 bar	(--)	280 bar	(--)