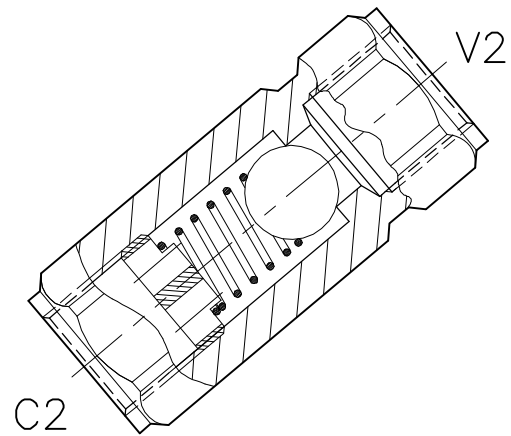
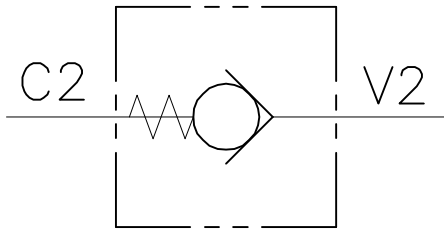


VNR-SF-...-...

VALVOLA DI BLOCCO CON TENUTA A SFERA
CHECK VALVE, BALL TYPE

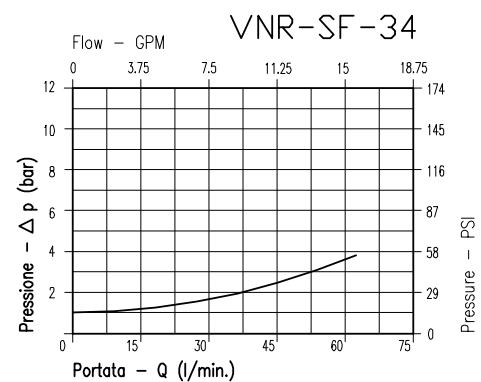
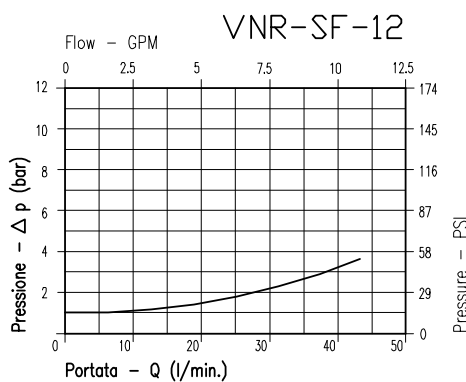
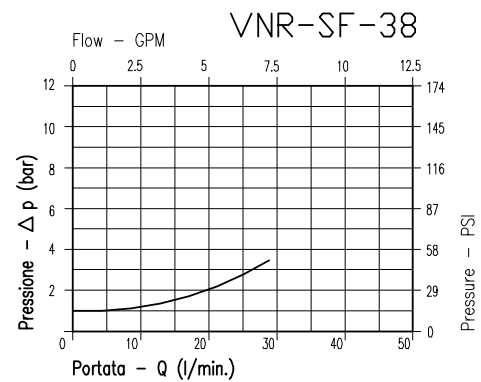
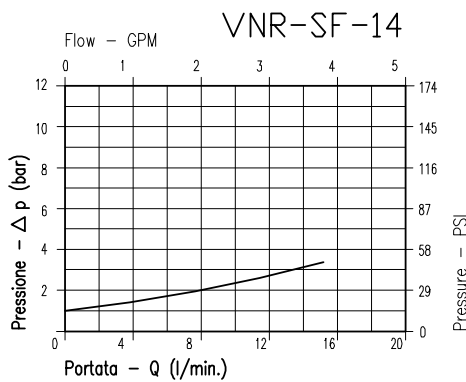


CARATTERISTICHE

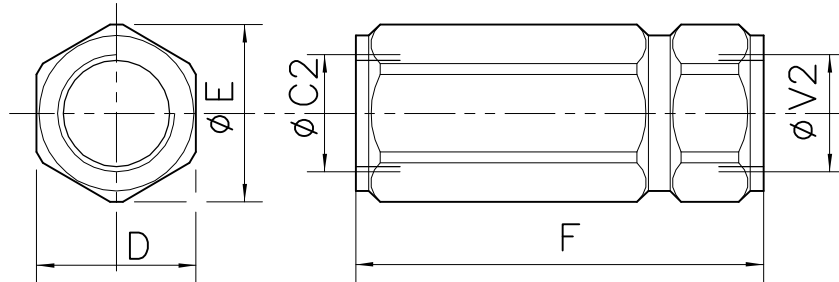
Luca nominale min/max	Vedi pag. 22
Portata min/max	Vedi pag. 22
Pressione di lavoro max.	350 bar - 5075 PSI
Temperatura ambiente	-30°C + 50°C
Temperatura olio	-30°C + 80°C
Filtraggio consigliato	30÷60 micron
Peso	Vedi pag. 22

PERFORMANCE

Min/max rated size
Min/max flow-rate
Max working pressure
Room temperature
Oil temperature
Recommended filtration
Weight



Viscosità olio 46 cSt a 50°C
Oil viscosity 46 cSt at 50°C



DIMENSIONI DIMENSIONS

NUMERO VALVOLA VALVE NUMBER	D	E	F	Attacchi Port size V2-C2 GAS (BSPP)	Luce nominale Rated size DN	Rapporto di pilotaggio Pilot ratio
021	60	40	30	1/4"	6	15-4
022	70	50	35	3/8"	8	30-8
023	80	50	35	1/2"	11	45-12
024	100	60	40	3/4"	16	65-17.2

CODICE DI ORDINAZIONE HOW TO ORDER

003

021

0

J

0

Numero valvola / Valve number

021

022

023

024

Omettere nella sigla valvola
Do not use in valve code

- | | |
|---|--|
| A | O-RING sul pist. di pilotaggio
Pilot piston O-RING |
| O | Senza O-RING sul pist. di pilotaggio
No pilot piston O-RING |

Inizio apertura
Cracking pressure

- | | |
|---|---|
| J | 1 bar
Molla (colore nero)
Spring (black) |
| W | 6÷8 bar
Molla (colore giallo)
Spring (yellow) |