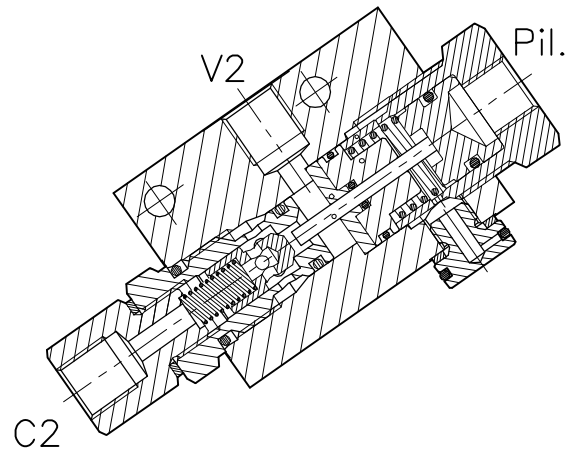
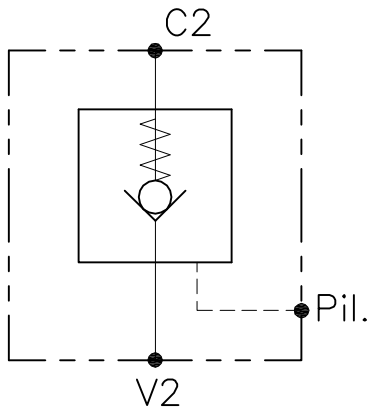


# VNR-SO-SE-PS-...-...

VALVOLA DI BLOCCO PILOTATA, A SEMPLICE EFFETTO  
SINGLE PILOT, CHECK VALVE

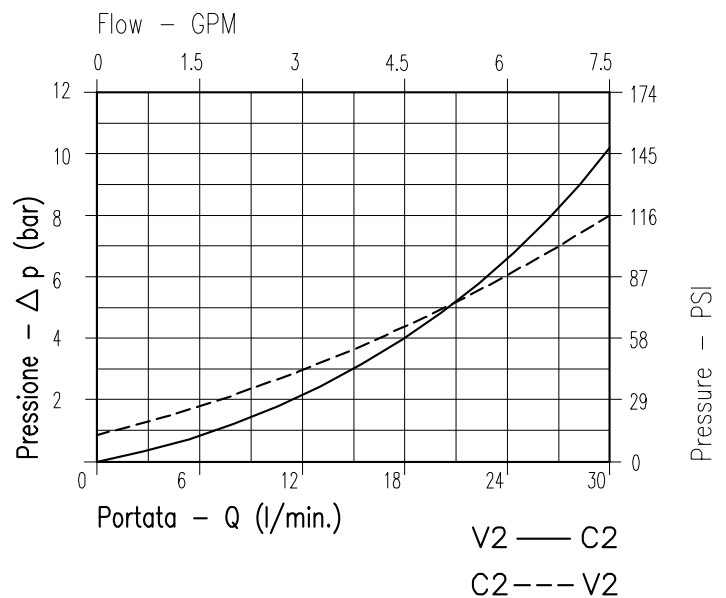


## CARATTERISTICHE

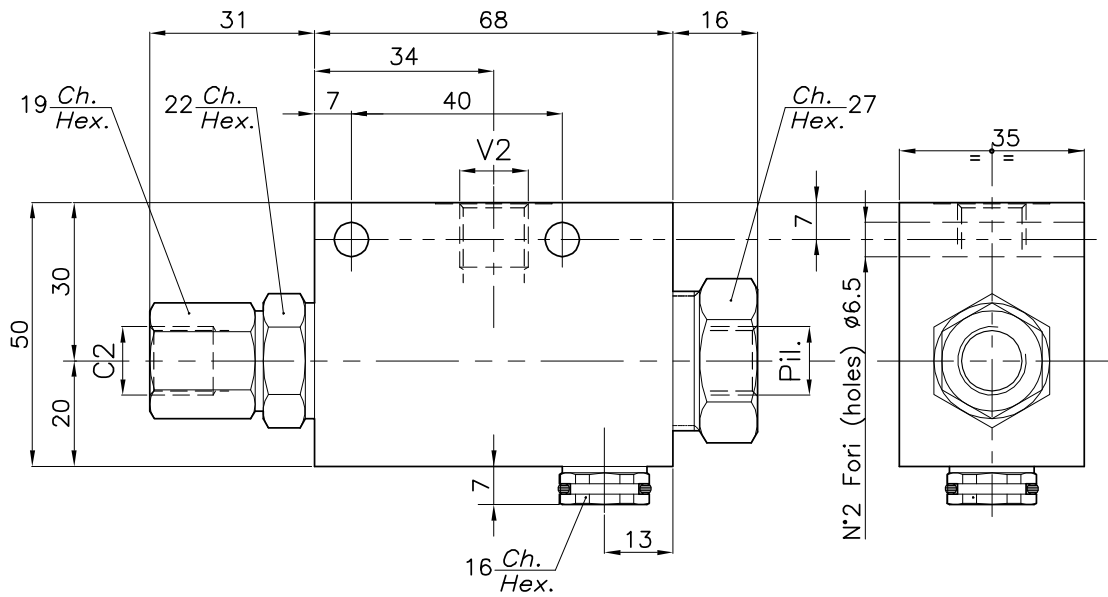
Luce nominale	<b>DN 6</b>
Portata min/max	<b>1/30 l/min. - 0.26/7.9 GPM</b>
Pressione di lavoro max.	<b>350 bar - 5075 PSI</b>
Rapporto di pilotaggio	<b>10 : 1</b>
Temperatura ambiente	<b>-30°C + 50°C</b>
Temperatura olio	<b>-30°C + 80°C</b>
Filtraggio consigliato	<b>50 micron</b>
Coppia di serraggio	<b>50±59</b>
Peso	

## PERFORMANCE

Rated size
Min/max flow-rate
Max working pressure
Pilot ratio
Room temperature
Oil temperature
Recommended filtration
Tightening torque
Weight



Viscosità olio 46 cSt a 50°C  
Oil viscosity 46 cSt at 50°C



## DIMENSIONI DIMENSIONS

NUMERO VALVOLA VALVE NUMBER	Attacchi Port size V2-C2 V1-C1 GAS (BSPP)
157	1/4"
158	3/8"

## CODICE DI ORDINAZIONE HOW TO ORDER

003 157 0 0 0

Numero valvola / Valve number

157

158