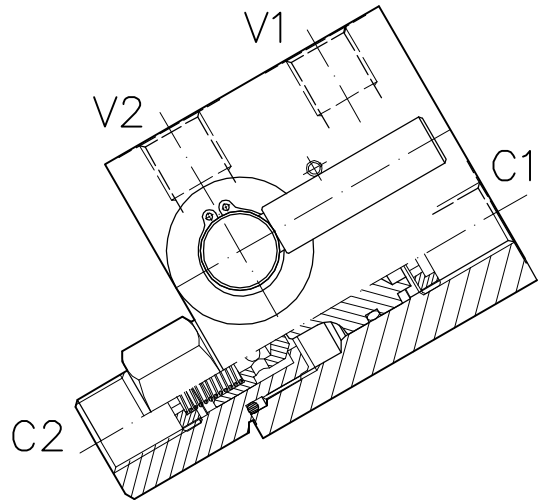
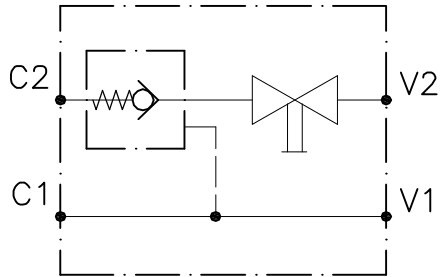


# VRC-SE-...-D-S

VALVOLA DI BLOCCO PILOTATA CON RUBINETTO DI SICUREZZA  
PILOT OPERATED CHECK VALVE WITH MANUAL SHUT-OFF



## CARATTERISTICHE

Luce nominale	<b>DN 8</b>
Portata min/max	<b>1/45 l/min. - 0.26/11.9 GPM</b>
Pressione di lavoro max.	<b>350 bar - 5075 PSI</b>
Temperatura ambiente	<b>-30°C + 50°C</b>
Temperatura olio	<b>-30°C + 80°C</b>
Filtraggio consigliato	<b>50 micron</b>

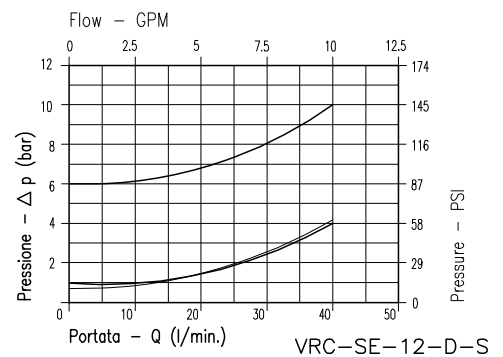
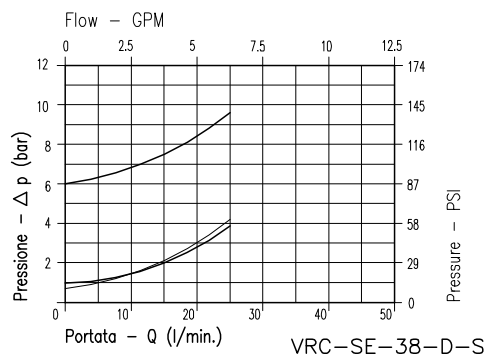
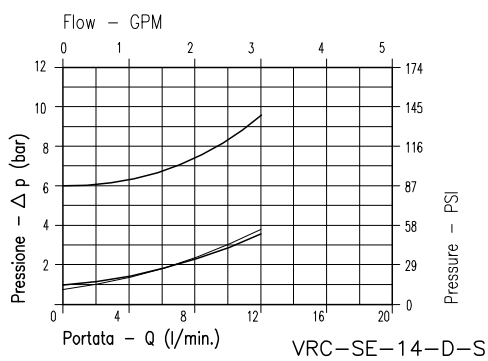
## PERFORMANCE

Rated size
Min/max flow-rate
Max working pressure
Room temperature
Oil temperature
Recommended filtration

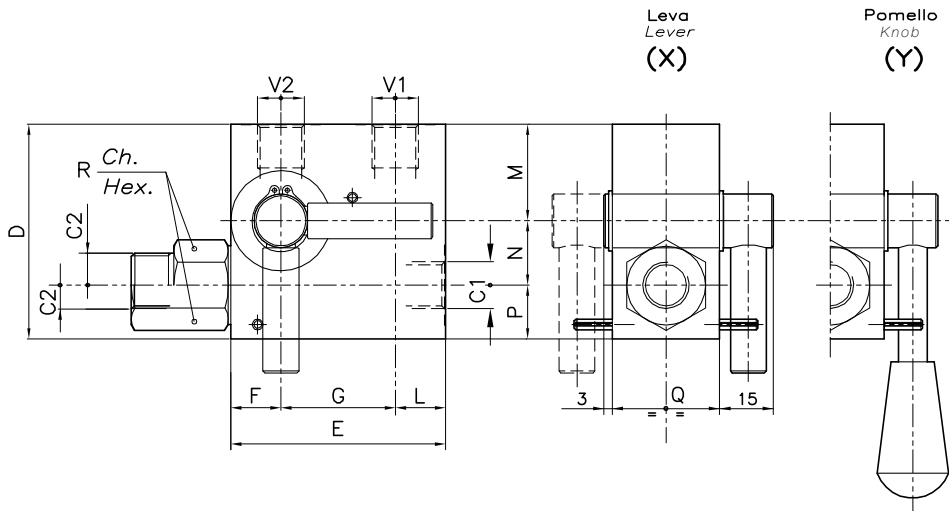
8Bar Flusso libero  
(free flow)

1Bar Flusso libero  
(free flow)

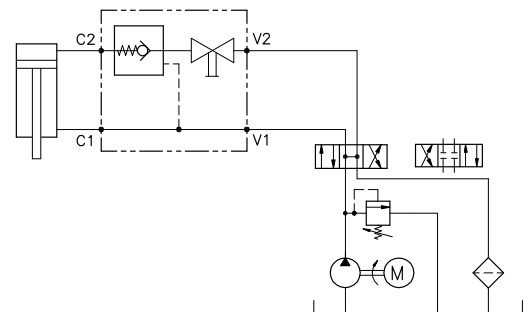
Flusso pilotato  
(piloted flow)



**Viscosità olio 46 cSt a 50°C**  
**Oil viscosity 46 cSt at 50°C**



### ESEMPIO TIPICO DI CIRCUITO TYPICAL CIRCUIT EXAMPLE



### DIMENSIONI DIMENSIONS

NUMERO VALVOLA VALVE NUMBER	D	E	F	G	L	M	N	P	Q	R	Attacchi Port size V1-V2 GAS (BSPP)	Attacchi Port size C1-C2 GAS (BSPP) DIN	Portata max Max flow-rate l/min - GPM
290	60	60	14	32	14	27	18	15	30	22	1/4"	1/4"	15-4
292	60	60	14	32	14	27	18	15	30	22	1/4"	1/4" DIN	15-4
291	60	60	14	32	14	27	18	15	30	24	3/8"	3/8"	35-9.2
293	60	60	14	32	14	27	18	15	30	22	3/8"	3/8" DIN	35-9.2

### CODICE DI ORDINAZIONE HOW TO ORDER

