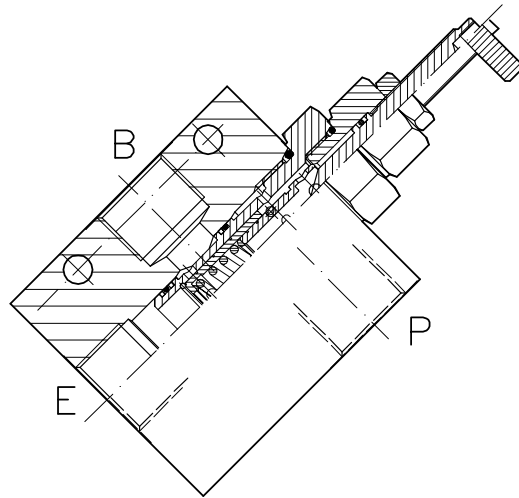
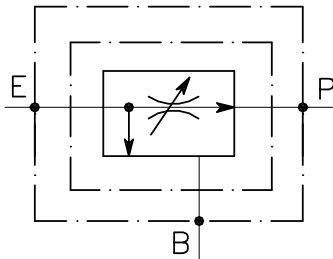


VRF-C-3V-100-C-...-L...

REGOLATORE DI FLUSSO PRIORITARIO A CARTUCCIA CON
ECCEDENZA IN PRESSIONE E COLLETTORE

CARTRIDGE STYLE PRIORITY FLOW CONTROL VALVE
WITH IN LINE BODY

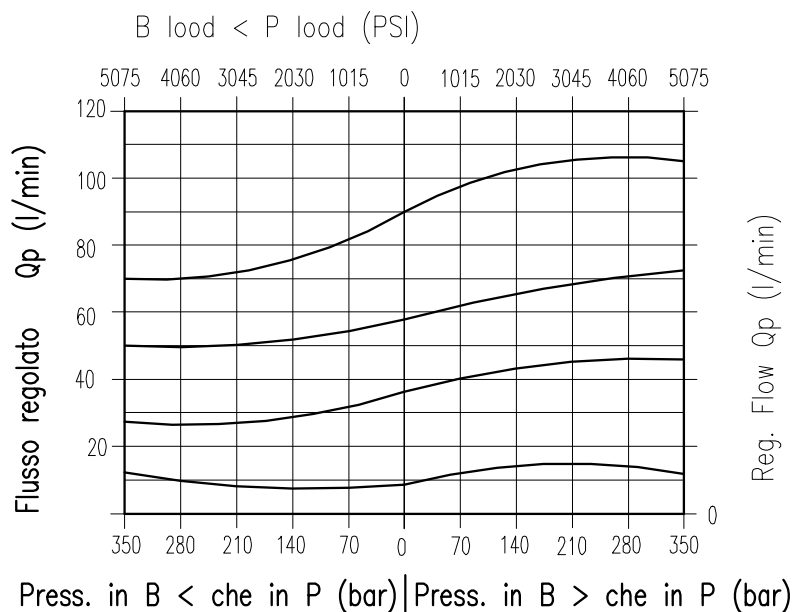


CARATTERISTICHE

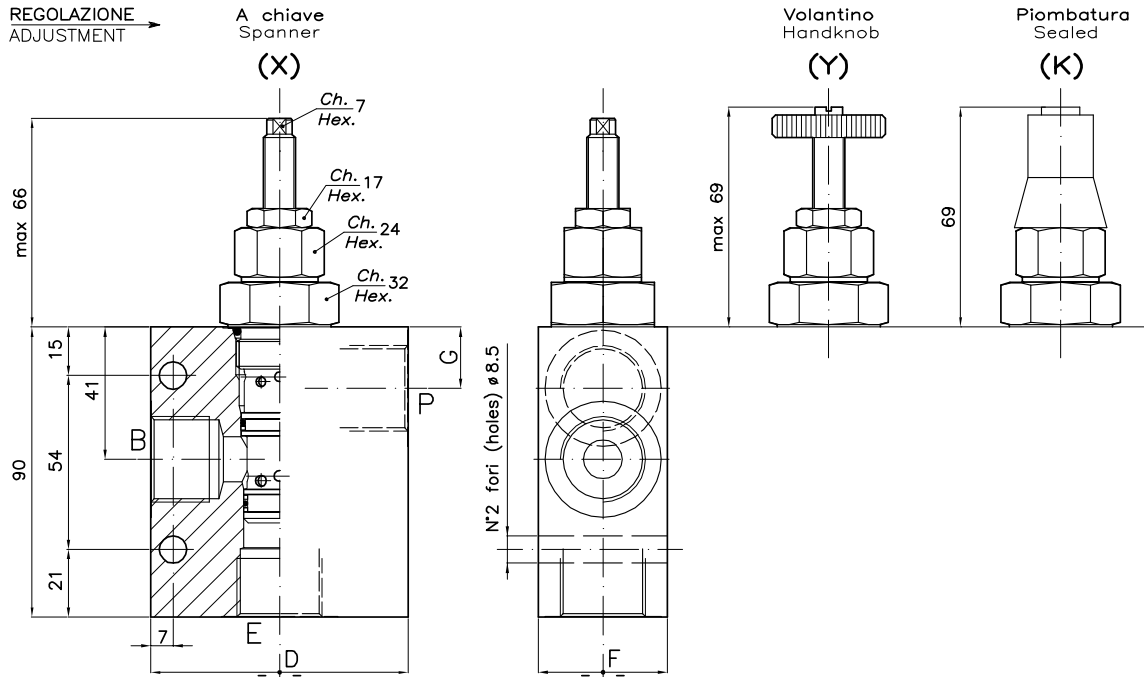
| | |
|--------------------------|------------------------------------|
| Luce nominale min/max | DN 12/14 |
| Portata min/max | 1/100 l/min - 0.26/26.4 GPM |
| Pressione di lavoro max. | 350 bar - 5075 PSI |
| Temperatura ambiente | -30°C + 50°C |
| Temperatura olio | -30°C + 80°C |
| Filtraggio consigliato | 50 micron |
| Peso | 0.850 Kg. 1/2" GAS |
| Peso | 0.912 Kg. 3/4" GAS |
| Peso | 1.142 Kg. 1" GAS |

PERFORMANCE

| |
|------------------------|
| Min/max rated size |
| Min/max flow-rate |
| Max working pressure |
| Room temperature |
| Oil temperature |
| Recommended filtration |
| Weight |
| Weight |
| Weight |



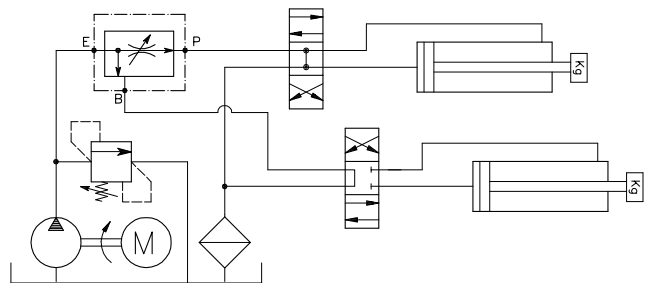
Viscosità olio 46 cSt a 50°C
Oil viscosity 46 cSt at 50°C



DIMENSIONI DIMENSIONS

| NUMERO VALVOLA VALVE NUMBER | D | F | G | Attacchi Port size E-P-B GAS (BSPP) |
|--------------------------------|----|----|----|--|
| 222 | 70 | 40 | 19 | 1/2" |
| 223 | 80 | 40 | 19 | 3/4" |
| 224 | 90 | 50 | 23 | 1" |

ESEMPIO TIPICO DI CIRCUITO TYPICAL CIRCUIT EXAMPLE



4.08.01 | pag. 04

CODICE DI ORDINAZIONE HOW TO ORDER

004 222 0 X 0

Numero valvola / Valve number
222
223
224

Regolazione
Adjustment
X A chiave - Spanner
Y Volantino - handknob
K Piombata - Sealed