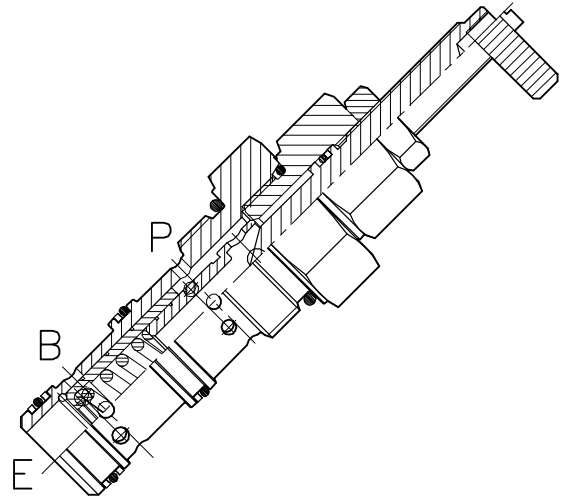
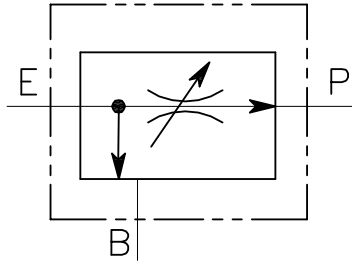


VRF-C-3V-100-M27-...

REGOLATORE DI FLUSSO PRIORITARIO A CARTUCCIA CON
ECCEDENZA IN PRESSIONE

CARTRIDGE STYLE PRIORITY FLOW CONTROL VALVE

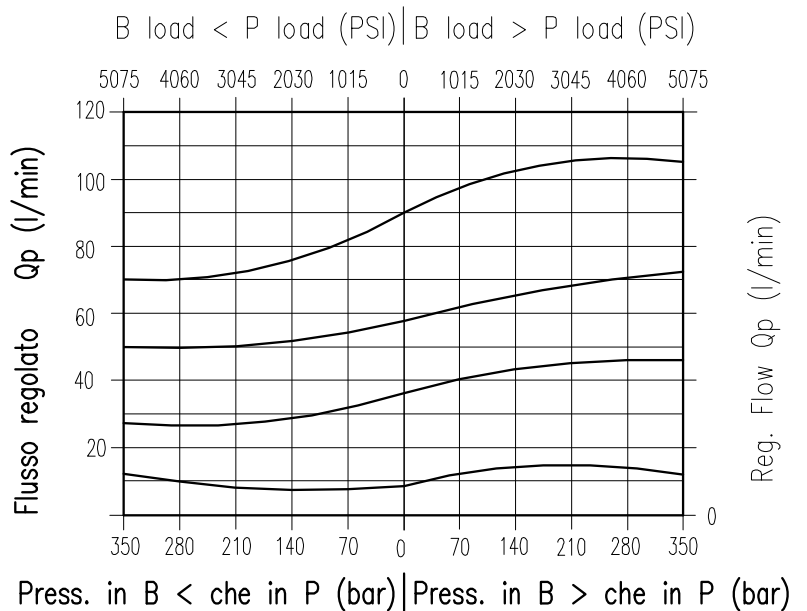


CARATTERISTICHE

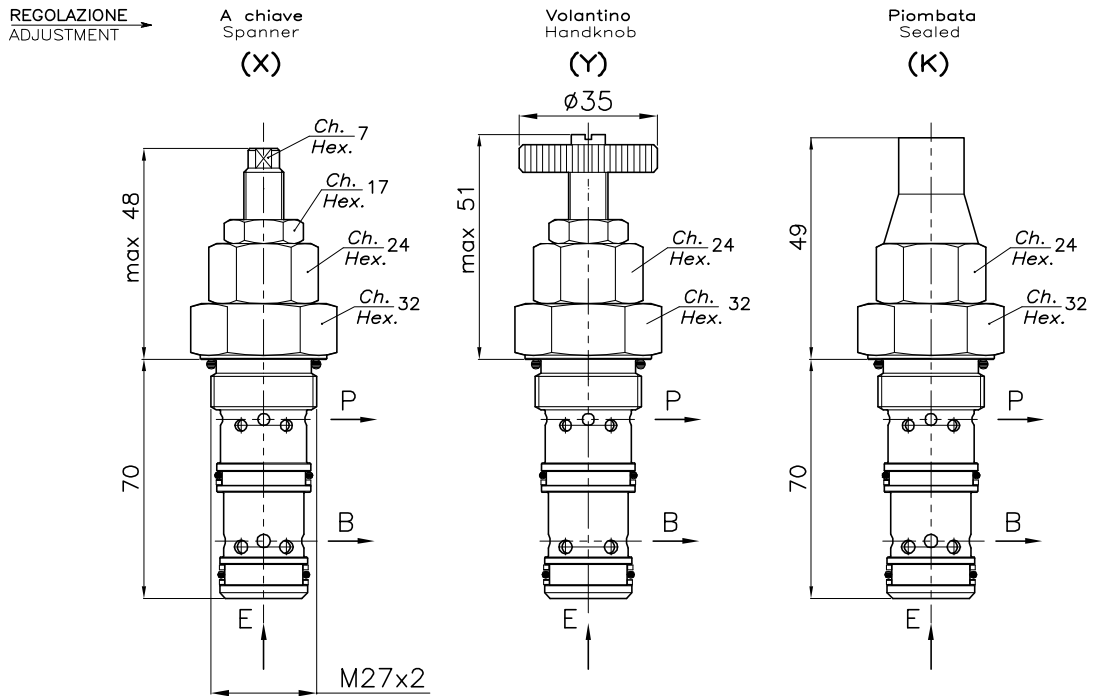
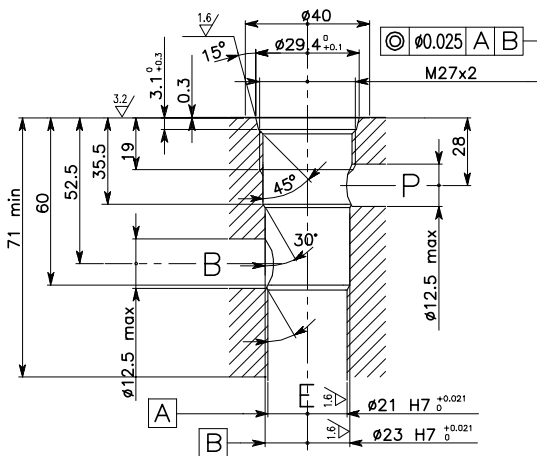
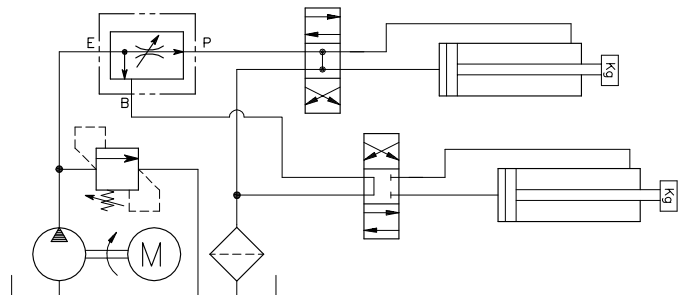
Luce nominale	DN 12
Portata min/max	1/100 l/min - 0.26/26.4 GPM
Pressione di lavoro max.	350 bar - 5075 PSI
Temperatura ambiente	-30°C + 50°C
Temperatura olio	-30°C + 80°C
Filtraggio consigliato	50 micron
Coppia di serraggio	80±90 Nm
Peso	0.313 Kg

PERFORMANCE

Rated size
Min/max flow-rate
Max working pressure
Room temperature
Oil temperature
Recommended filtration
Tightening torque
Weight



Viscosità olio 46 cSt a 50°C
Oil viscosity 46 cSt at 50°C


CAVITA'
CAVITY

ESEMPIO TIPICO DI CIRCUITO
TYPICAL CIRCUIT EXAMPLE


Si raccomanda l'esatta esecuzione della sede
The valve seat should be perfectly tooled

CODICE DI ORDINAZIONE
HOW TO ORDER

004 238 0 X 0

Regolazione
Adjustment

X	A chiave - Spanner
Y	Volantino - handknob
K	Piombata - Sealed