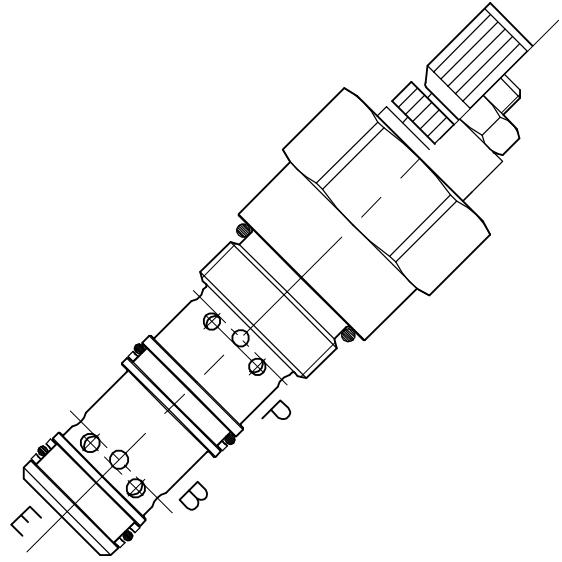
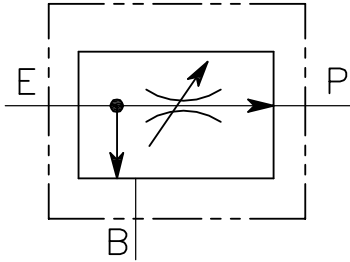


VRF-C-3V-130-...

REGOLATORE DI FLUSSO PRIORITARIO A CARTUCCIA CON
ECCEDEZZA IN PRESSIONE
CARTRIDGE STYLE PRIORITY FLOW CONTROL VALVE

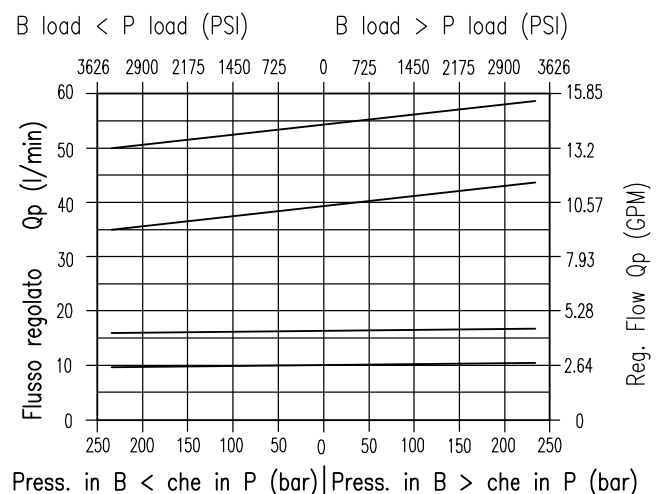
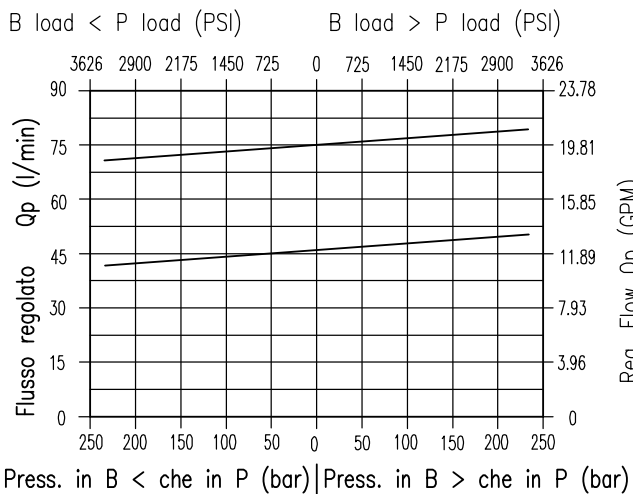


CARATTERISTICHE

Luce nominale	DN 14
Portata min/max	0.5/130 l/min - 0.1/34 GPM
Pressione di lavoro max.	315 bar - 4568 PSI
Temperatura ambiente	-30°C + 50°C
Temperatura olio	-30°C + 80°C
Filtraggio consigliato	25 micron
Coppia di serraggio	100±120 Nm
Peso	0.600 Kg

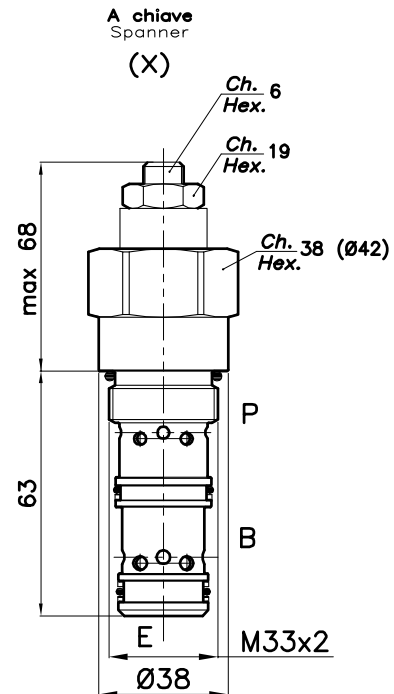
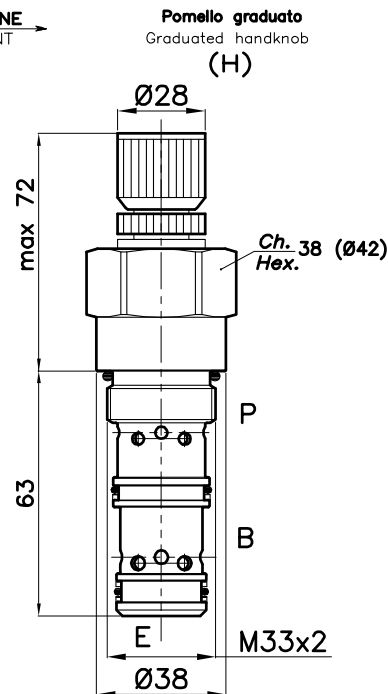
PERFORMANCE

Rated size
Min/max flow-rate
Max working pressure
Room temperature
Oil temperature
Recommended filtration
Tightening torque
Weight



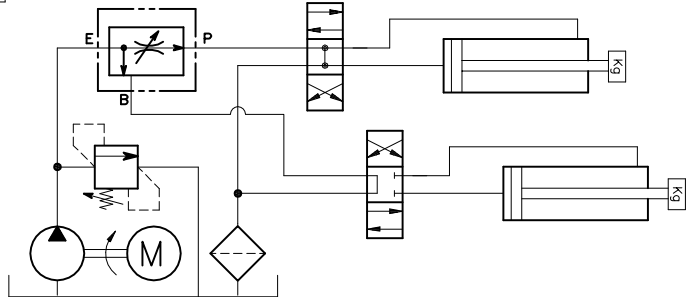
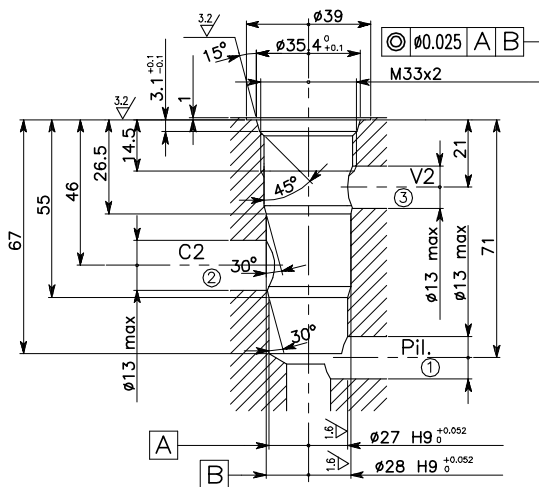
Viscosità olio 46 cSt a 50°C
Oil viscosity 46 cSt at 50°C

REGOLAZIONE
ADJUSTMENT →



CAVITA' CAVITY CE.156.N

ESEMPIO TIPICO DI CIRCUITO TYPICAL CIRCUIT EXAMPLE



Si raccomanda l'esatta esecuzione della sede
The valve seat should be perfectly tooled

CODICE DI ORDINAZIONE HOW TO ORDER

004 250 0 X 0

	TIPO (Y) TYPE (Y)	
	L/min	GPM
A	da 0.05 a 45	0.01 to 12
B	da 0.05 a 75	0.01 to 20

	TIPO (X) TYPE (X)	
	L/min	GPM
A	da 4 a 8	1 to 2
B	da 8 a 16	2 to 4
C	da 16 a 30	4 to 8
D	da 30 a 60	8 to 16

Regolazione Adjustment	
X	A chiave - Spanner
Y	Pomello - handknob