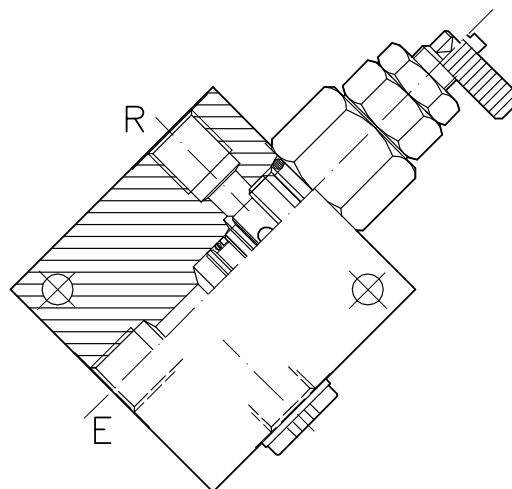
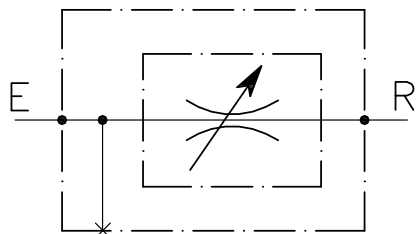


VST-T-20-C-...-...

REGOLATORE DI FLUSSO A CARTUCCIA BIDIREZIONALE CON COLLETTORE IN DERIVAZIONE

CARTRIDGE STYLE FLOW RESTRICTOR VALVE WITH 90 DEGREE BODY

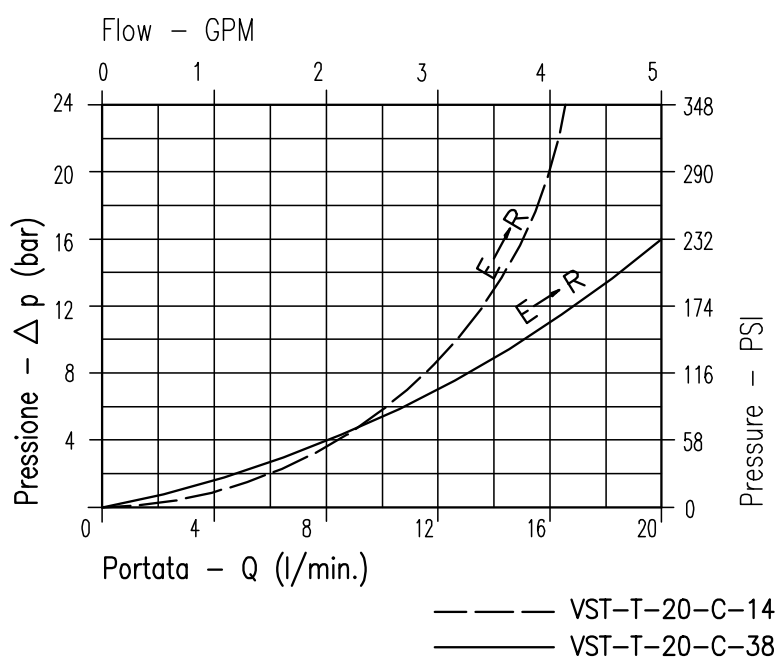


CARATTERISTICHE

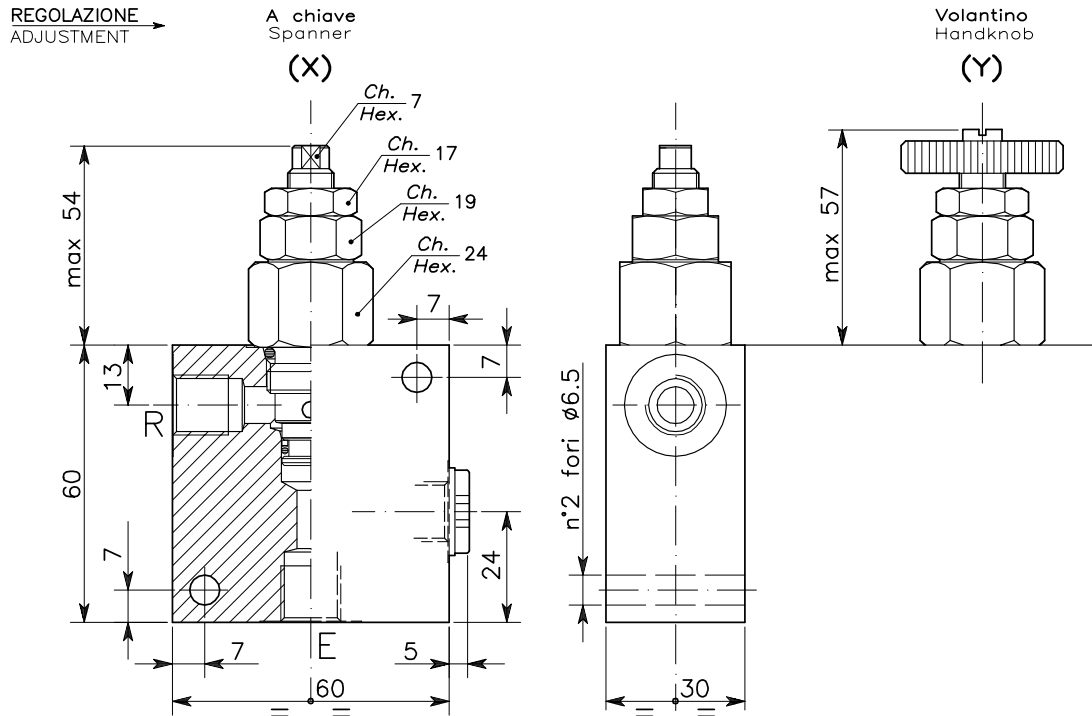
Luce nominale	DN 6
Portata min/max	1/20 l/min - 0.26/5.3 GPM
Pressione di lavoro max.	350 bar - 5075 PSI
Temperatura ambiente	-30°C + 50°C
Temperatura olio	-30°C + 80°C
Filtraggio consigliato	30 micron
Peso	0.414 Kg. 1/2" GAS
Peso	0.413 Kg. 3/8" GAS

PERFORMANCE

Rated size
Min/max flow-rate
Max working pressure
Room temperature
Oil temperature
Recommended filtration
Weight
Weight



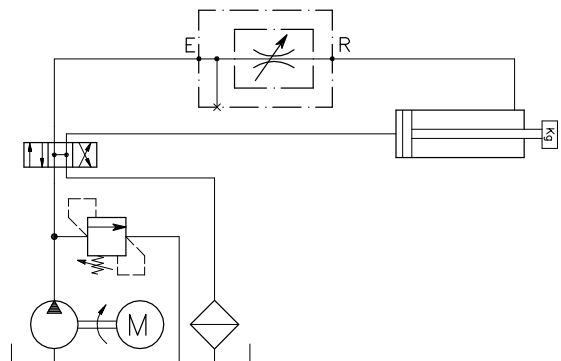
Viscosità olio 46 cSt a 50°C
Oil viscosity 46 cSt at 50°C



DIMENSIONI DIMENSIONS

NUMERO VALVOLA VALVE NUMBER	Attacchi Port size E-R GAS (BSPP)
028	1/4"
029	3/8"

ESEMPIO TIPICO DI CIRCUITO TYPICAL CIRCUIT EXAMPLE



CODICE DI ORDINAZIONE HOW TO ORDER

004 028 0 X 0

Numero valvola / Valve number

028

029

Regolazione Adjustment	
X	A chiave - Spanner
Y	Volantino - handknob