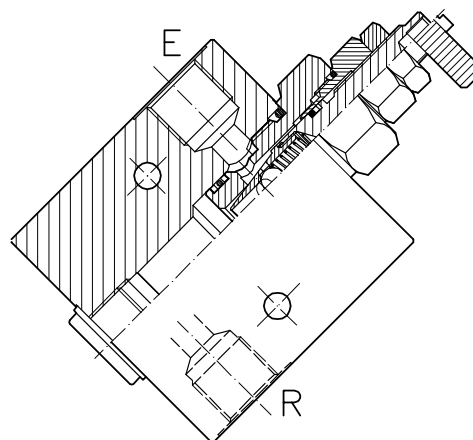
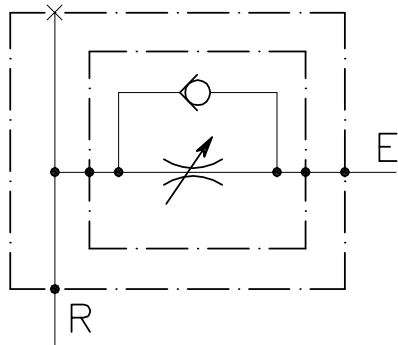


VST-UD-T-45-C-...-L-...

REGOLATORE DI FLUSSO A CARTUCCIA UNIDIREZIONALE CON COLLETTORE IN LINEA

CARTRIDGE STYLE FLOW RESTRICTOR VALVE WITH REVERSE CHECK AND IN LINE BODY

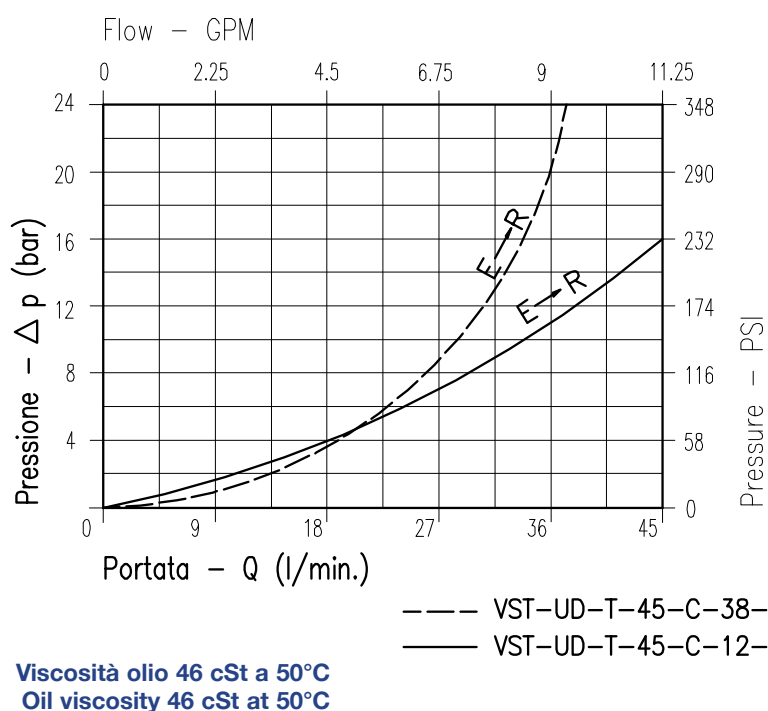


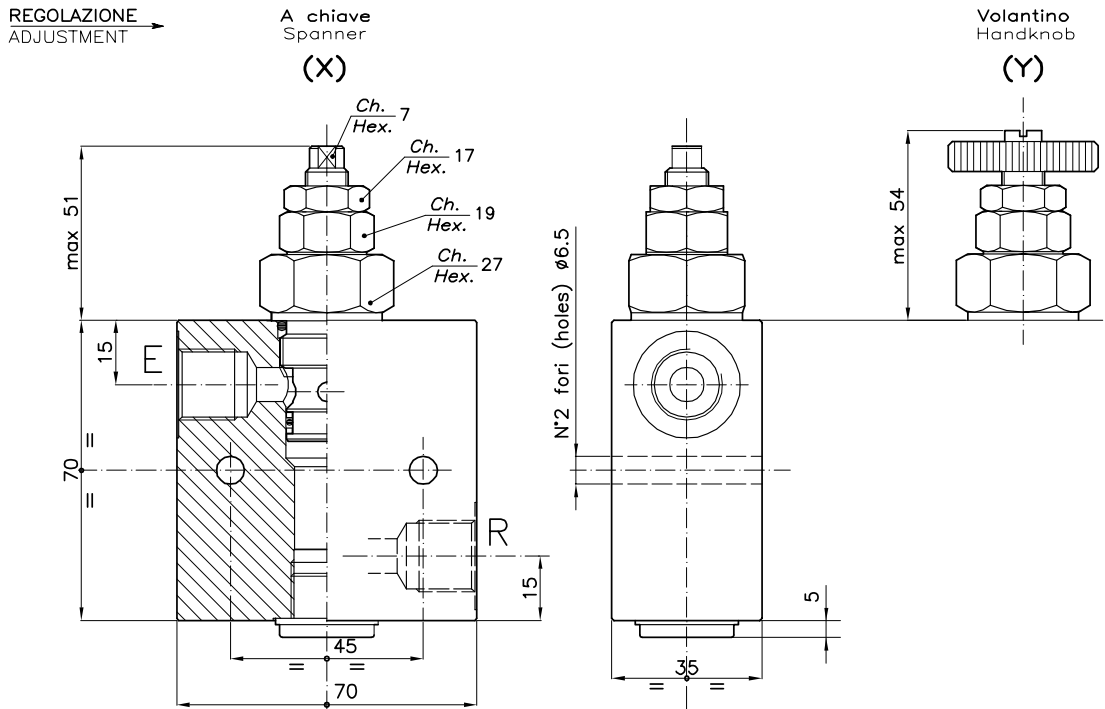
CARATTERISTICHE

Luce nominale	DN 7
Portata min/max	1/45 l/min - 0.26/11.9 GPM
Pressione di lavoro max.	350 bar - 5075 PSI
Temperatura ambiente	-30°C + 50°C
Temperatura olio	-30°C + 80°C
Filtraggio consigliato	50 micron
Peso	0.586 Kg. 3/8" GAS
Peso	0.587 Kg. 1/2" GAS

PERFORMANCE

Rated size
Min/max flow-rate
Max working pressure
Room temperature
Oil temperature
Recommended filtration
Weight
Weight

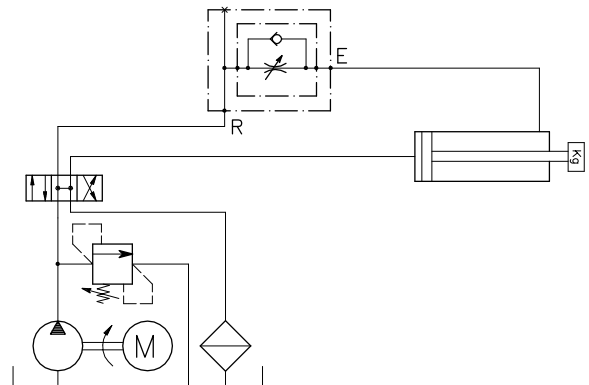




DIMENSIONI DIMENSIONS

NUMERO VALVOLA VALVE NUMBER	Attacchi Port size E-R GAS (BSPP)
050	3/8"
051	1/2"

ESEMPIO TIPICO DI CIRCUITO TYPICAL CIRCUIT EXAMPLE



CODICE DI ORDINAZIONE HOW TO ORDER

004 050 0 X 0

Numero valvola / Valve number
050
051

Regolazione Adjustment	
X	A chiave - Spanner
Y	Volantino - handknob