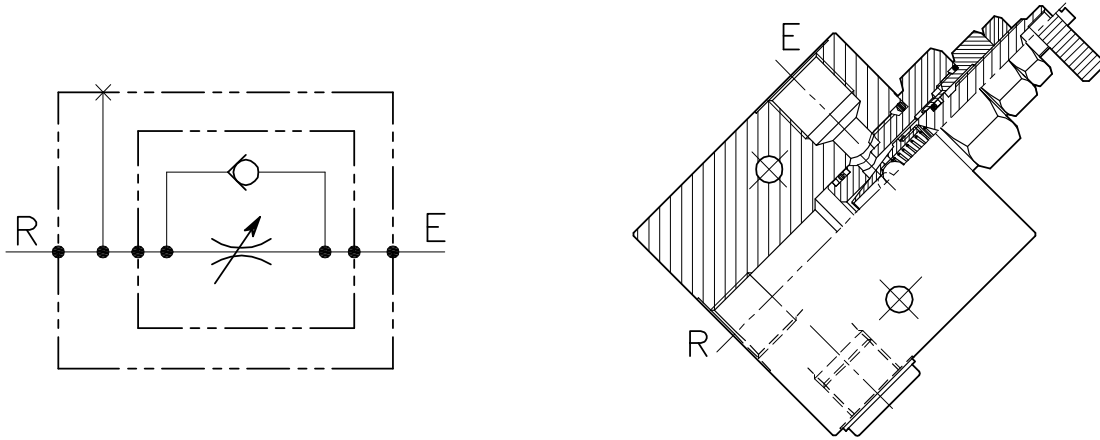


# VST-UD-T-45-C-.....

REGOLATORE DI FLUSSO A CARTUCCIA UNIDIREZIONALE CON COLLETTORE IN DERIVAZIONE

CARTRIDGE STYLE FLOW RESTRICTOR VALVE WITH REVERSE CHECK AND 90 DEGREE BODY

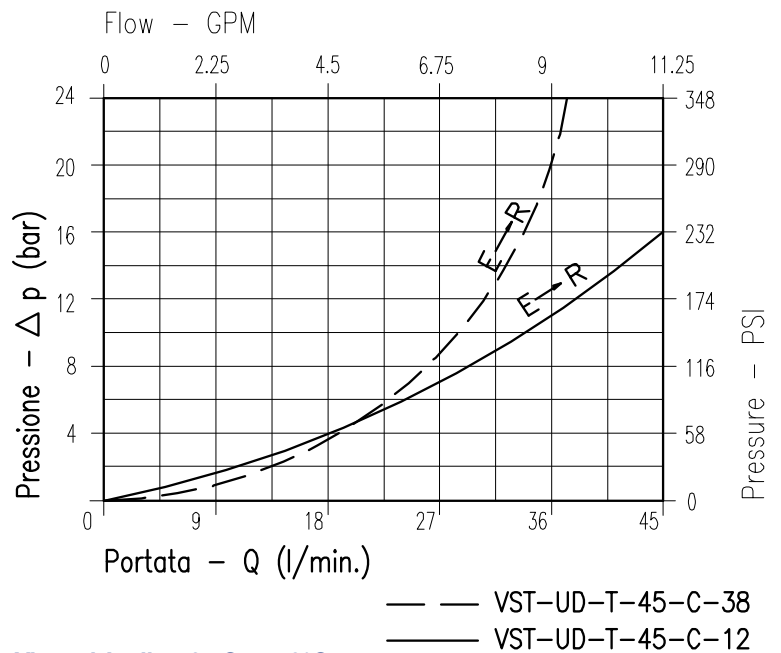


## CARATTERISTICHE

Luce nominale	<b>DN 7</b>
Portata min/max	<b>1/45 l/min - 0.26/11.9 GPM</b>
Pressione di lavoro max.	<b>350 bar - 5075 PSI</b>
Temperatura ambiente	<b>-30°C + 50°C</b>
Temperatura olio	<b>-30°C + 80°C</b>
Filtraggio consigliato	<b>50 micron</b>
Peso	<b>0.587 Kg. 3/8" GAS</b>
Peso	<b>0.587 Kg. 1/2" GAS</b>

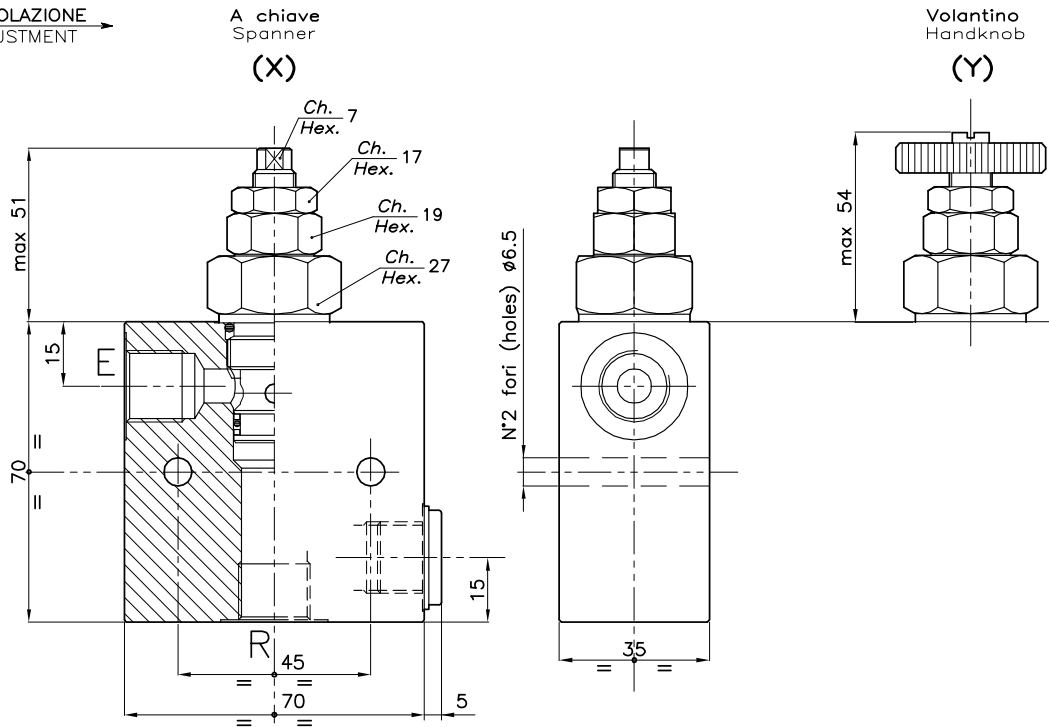
## PERFORMANCE

Rated size
Min/max flow-rate
Max working pressure
Room temperature
Oil temperature
Recommended filtration
Weight
Weight



Viscosità olio 46 cSt a 50°C  
Oil viscosity 46 cSt at 50°C

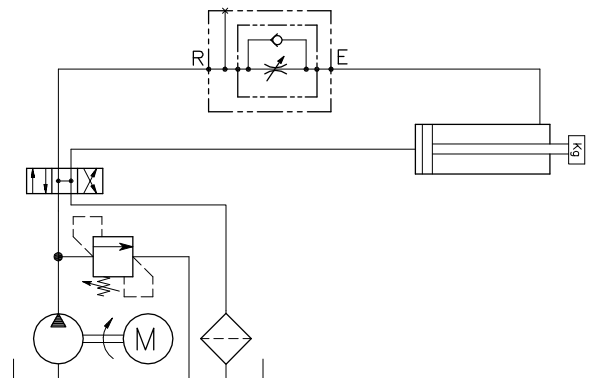
REGOLAZIONE  
ADJUSTMENT →



## DIMENSIONI DIMENSIONS

NUMERO VALVOLA VALVE NUMBER	Attacchi Port size E-R GAS (BSPP)
048	3/8"
049	1/2"

## ESEMPIO TIPICO DI CIRCUITO TYPICAL CIRCUIT EXAMPLE



## CODICE DI ORDINAZIONE HOW TO ORDER

004      048      0      X      0

Numero valvola / Valve number

048

---

049

Regolazione Adjustment	
X	A chiave - Spanner
Y	Volantino - handknob