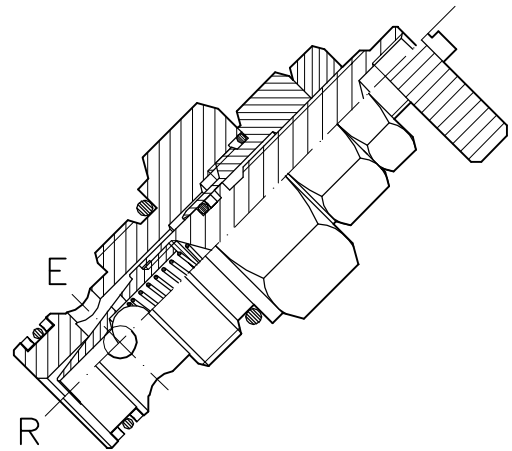
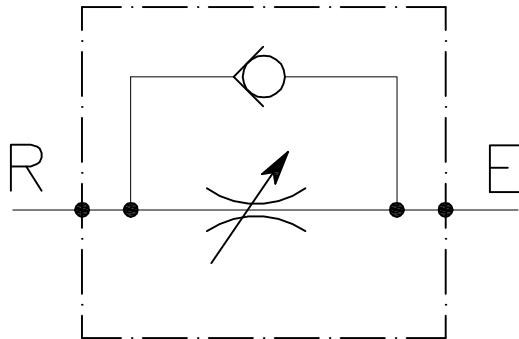


VST-UD-T-45-...

VALVOLA REGOLATRICE DI FLUSSO A CARTUCCIA UNIDIREZIONALE

CARTRIDGE STYLE FLOW CONTROL VALVE WITH REVERSE FLOW CHECK

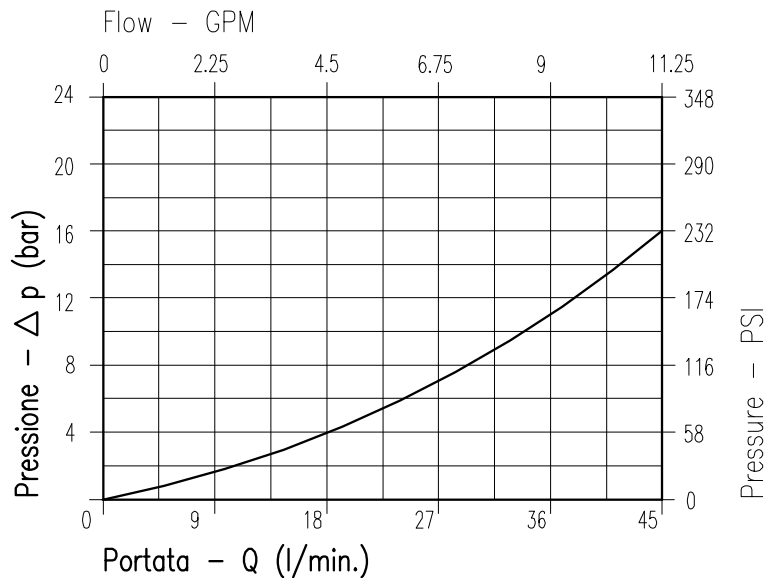


CARATTERISTICHE

Luca nominale	DN 8
Portata min/max	1/45 l/min - 0.26/11.9 GPM
Pressione di lavoro max.	350 bar - 5075 PSI
Temperatura ambiente	-30°C + 50°C
Temperatura olio	-30°C + 80°C
Filtraggio consigliato	50 micron
Coppia di serraggio	46±54 Nm
Peso	0.157 Kg

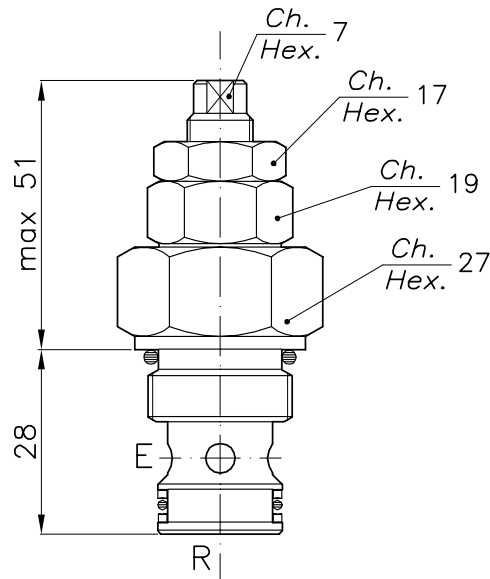
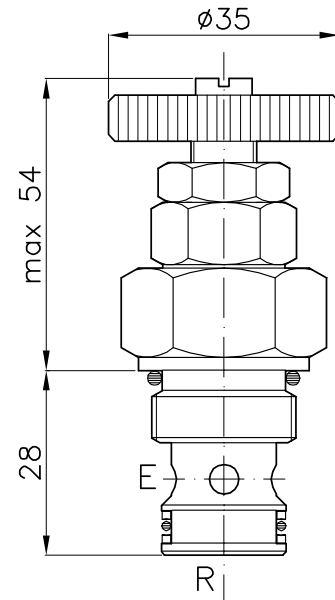
PERFORMANCE

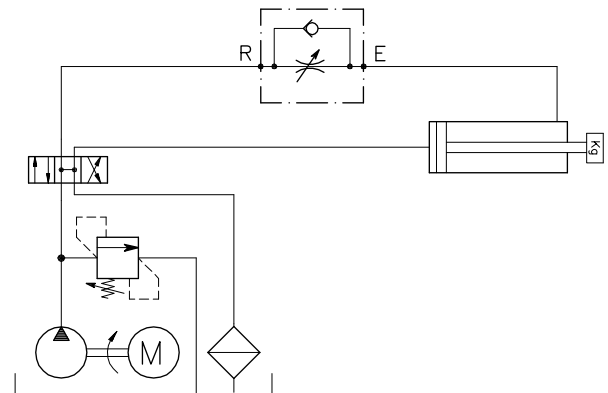
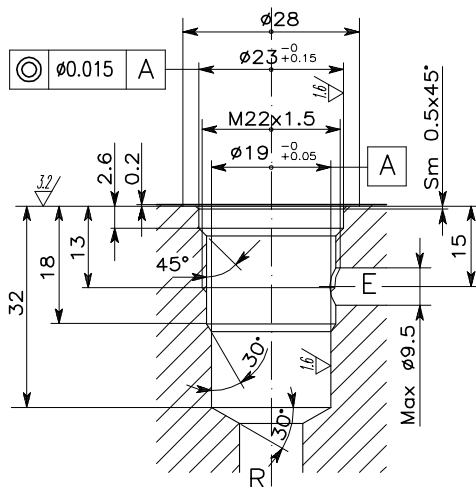
Rated size
Min/max flow-rate
Max working pressure
Room temperature
Oil temperature
Recommended filtration
Tightening torque
Weight



Viscosità olio 46 cSt a 50°C
Oil viscosity 46 cSt at 50°C

REGOLAZIONE
ADJUSTMENT

 A chiave
Spanner
(X)

 Volantino
Handknob
(Y)

CAVITA'
CAVITY CE.014.N

ESEMPIO TIPICO DI CIRCUITO
TYPICAL CIRCUIT EXAMPLE

 Si raccomanda l'esatta esecuzione della sede
The valve seat should be perfectly tooled

CODICE DI ORDINAZIONE
HOW TO ORDER

004 026 0 X 0

 Regolazione
Adjustment

X | A chiave - Spanner

Y | Volantino - handknob