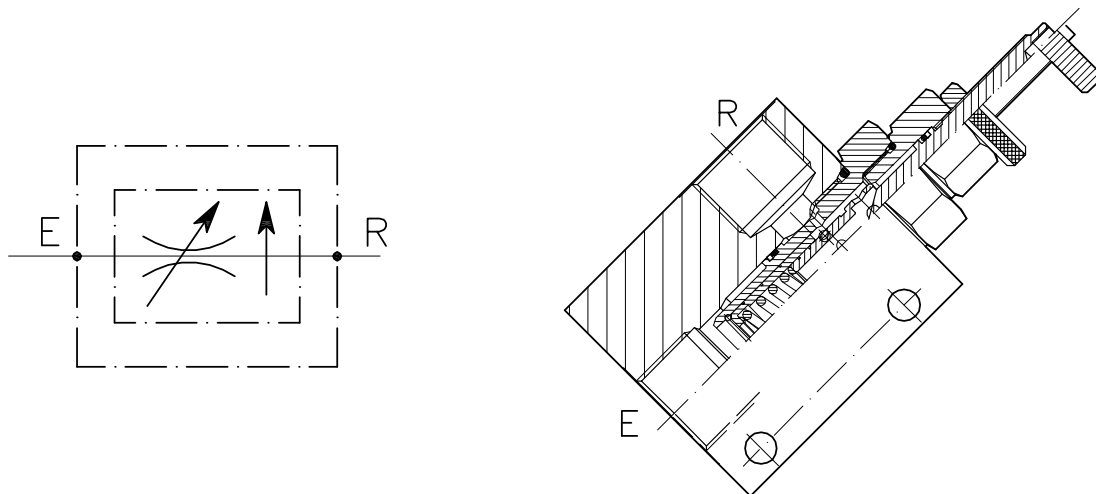


# VSTC-100-C-...-...

REGOLATORE DI FLUSSO A CARTUCCIA COMPENSATO CON COLLETTORE IN DERIVAZIONE  
 CARTRIDGE STYLE PRESSURE COMPENSATED FLOW CONTROL VALVE WITH 90 DEGREE BODY



## CARATTERISTICHE

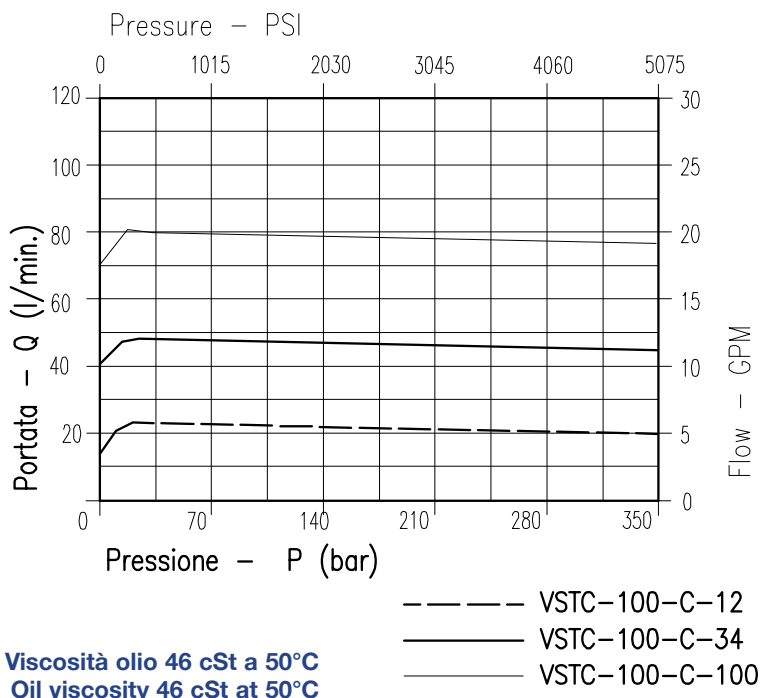
Luce nominale min/max	<b>DN 12/14</b>
Portata min/max	<b>1/100 l/min - 0.26/26.4 GPM</b>
Pressione di lavoro max.	<b>350 bar - 5075 PSI</b>
Temperatura ambiente	<b>-30°C + 50°C</b>
Temperatura olio	<b>-30°C + 80°C</b>
Filtraggio consigliato	<b>50 micron</b>
Peso	<b>0.769 Kg. 1/2" GAS</b>
Peso	<b>0.778 Kg. 3/4" GAS</b>
Peso	<b>0.982 Kg. 1" GAS</b>

## PERFORMANCE

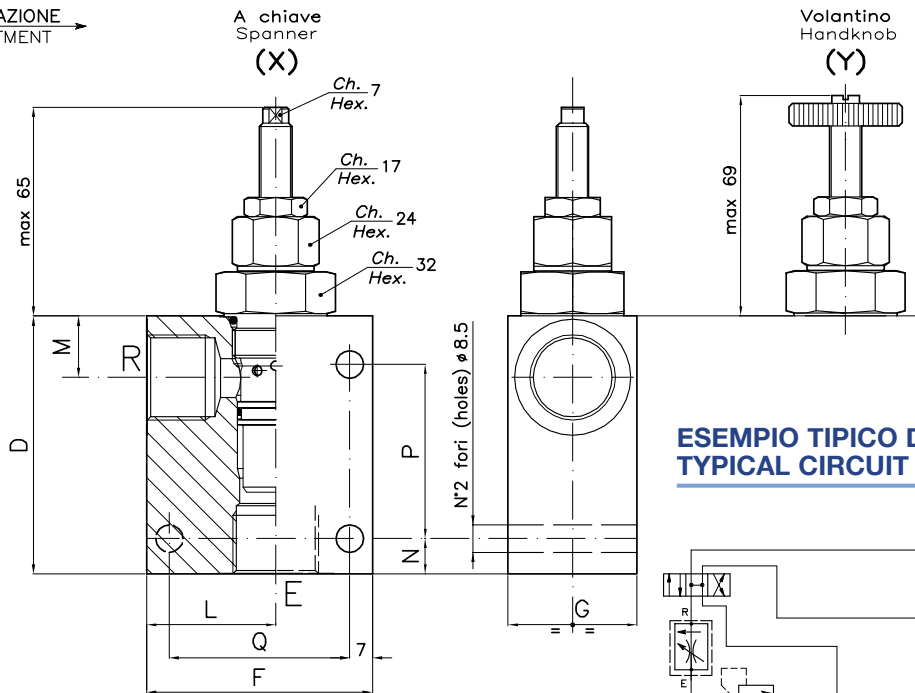
Min/max rated size
Min/max flow-rate
Max working pressure
Room temperature
Oil temperature
Recommended filtration
Weight
Weight
Weight

### NOTE:

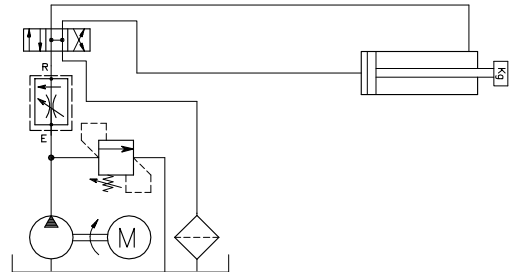
Flusso compensato da E verso R.  
 Flusso inverso consentito ma non compensato (funziona in modo strozzato).  
 Compensated flow from E to R  
 Reverse flow allowed but not compensated (throttle operation)



REGOLAZIONE  
ADJUSTMENT →



### ESEMPIO TIPICO DI CIRCUITO TYPICAL CIRCUIT EXAMPLE



### DIMENSIONI DIMENSIONS

NUMERO VALVOLA VALVE NUMBER	D	F	G	L	M	N	P	Q	Attacchi Port size E-R GAS (BSPP)
218	90	60	40	33	19	18		46	1/2"
219	80	70	40	40	19	11	54		3/4"
225	80	80	50	45	23	11	54		1"

### CODICE DI ORDINAZIONE HOW TO ORDER

004      218      0      X      0

Numero valvola / Valve number  
218  
219  
225

Regolazione  
Adjustment  
X | A chiave - Spanner  
Y | Volantino - handknob